

Microclimate Analysis Pedestrian Wind Comfort

Cambridge Road (RBK) LLP

Cambridge Road Estate
Kingston
London



Version	Revision	Date	Author	Reviewer	Project Manager
1	A	19.10.2020	Nikolaos Protogeros	Malcolm Maclean	Nikolaos Protogeros
2	A	26.04.2021	Nikolaos Protogeros	Malcolm Maclean	Nikolaos Protogeros
2	B	14.05.2021	Nikolaos Protogeros	Malcolm Maclean	Nikolaos Protogeros

© Copyright SRE Ltd 2021

All rights reserved. No part of this publication may be reproduced, distributed, or transmitted in any form or by any means, including photocopying, recording, or other electronic or mechanical methods, without the prior written permission of the author, except in the case of brief quotations embodied in critical reviews and certain other non-commercial uses permitted by copyright law. For permission requests, write to the author, at the address below:

SRE Main Office | Greenforde Farm
Stoner Hill Road | Froxfield
Petersfield | Hampshire | GU32 1DY
01730 710044
info@sre.co.uk
www.sre.co.uk

Contents

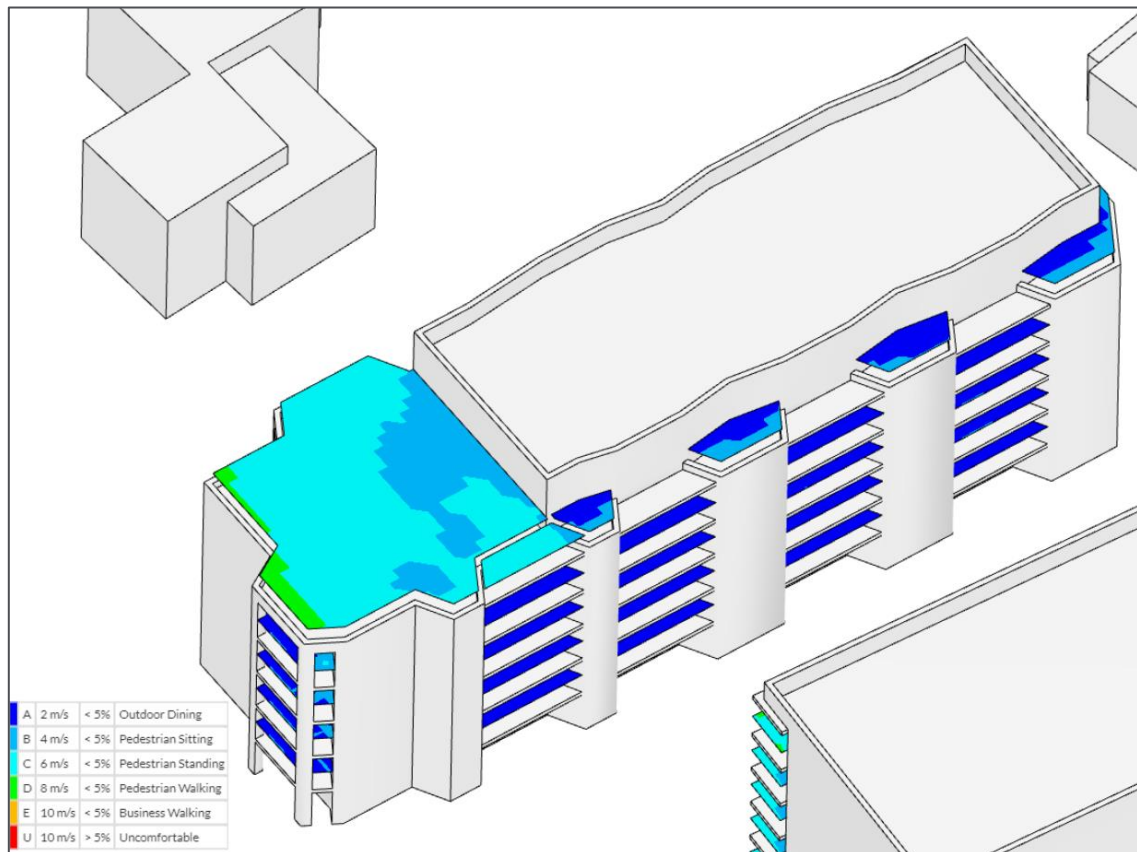
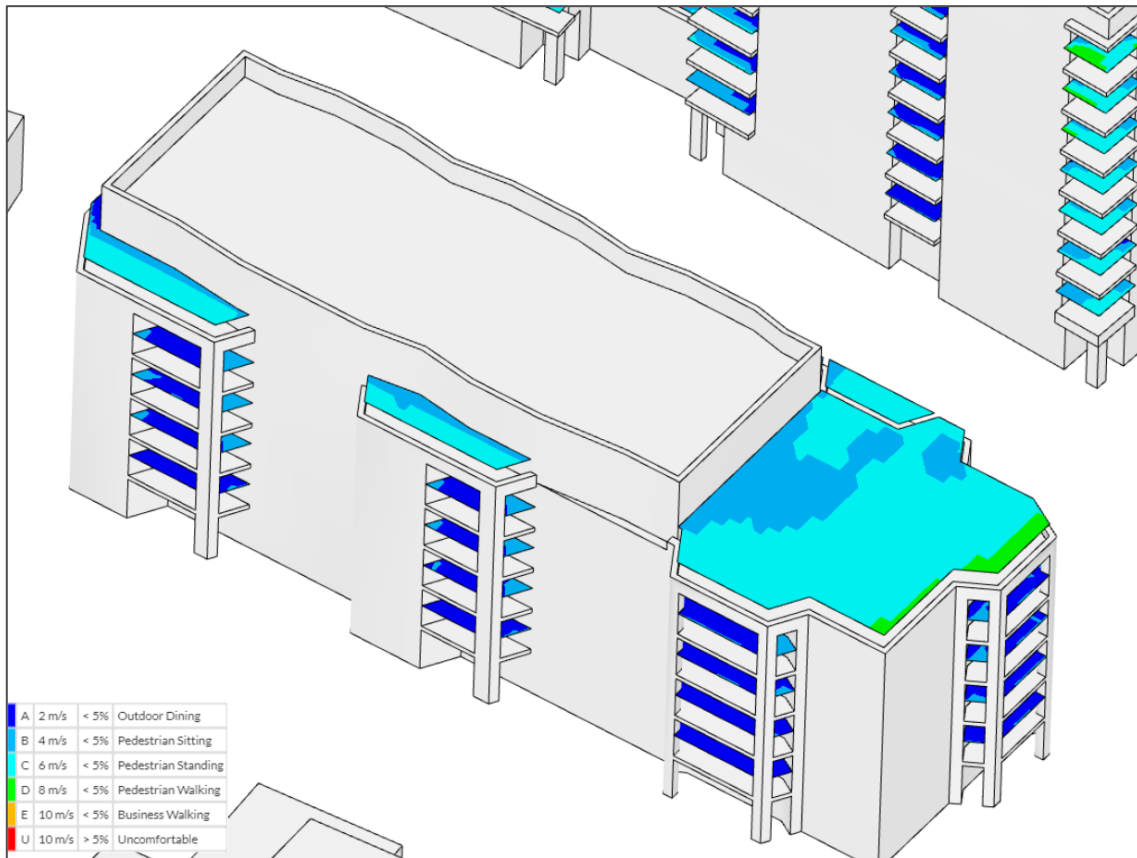
Executive Summary.....	1
1.0 Introduction.....	4
1.1 The Proposed Development	6
2.0 Applicable Policy and Standards	9
National Planning Policy.....	9
Regional Planning Policy	9
2.1 BRE Guide “Wind Microclimate Around Buildings” (DG 530)	9
2.2 The London Plan - Spatial Development Strategy for Greater London (2021).....	9
2.3 Lawson Comfort Criteria	10
2.4 Strong winds – Lawson Safe Criteria	11
2.5 Defining Significance	11
2.6 Scale & Significance	11
3.0 Methodology – Computational Fluid Dynamics (CFD)	13
3.1 Terrain Roughness Approaching Site, Atmospheric Boundary Layer (ABL) Profile	13
3.2 Wind Analysis.....	13
3.3 Aerodynamic information – Terrain roughness	15
3.4 Gust-Equivalent Mean (GEM)	17
3.5 Comfort and Safety Plots	17
4.0 Results.....	19
4.1 Scenario 1 - Existing Site - Comfort Conditions.....	19
4.2 Scenario 1 - Existing Site - Strong Winds, Safe Conditions	22
4.3 Scenario 2 – Proposed Development - Comfort Conditions	23
4.4 Scenario 2 - Proposed Development - Strong Winds, Safe Conditions	28
4.5 Scenario 3 – Proposed Development with mitigation - Comfort Conditions	30
4.6 Scenario 3 - Proposed Development with mitigation - Strong Winds, Safe Conditions	34
5.0 Conclusions.....	38
Appendix A – Proposed Masterplan.....	A
Appendix B – Scenario 2. Lawson Comfort Conditions, Summer, Balconies Building B	B
Appendix C – Scenario 2. Lawson Comfort Conditions, Summer, Balconies Building C	C
Appendix D – Scenario 2. Lawson Comfort Conditions, Summer, Balconies Building E	E
Appendix E – Scenario 2. Lawson Safe Conditions, Annual, Balconies Building B.....	G
Appendix F – Scenario 2. Lawson Safe Conditions, Annual, Balconies Building C.....	H

Appendix G	– Scenario 2. Lawson Safe Conditions, Annual, Balconies Building E	J
Appendix H	– Scenario 3. Lawson Comfort Conditions, Summer, Balconies Building C	L
Appendix I	– Scenario 3. Lawson Comfort Conditions, Summer, Balconies Building E	N
Appendix J	Scenario 3. Lawson Safe Conditions, Annual, Balconies Building C	P
Appendix K	– Scenario 3. Lawson Safe Conditions, Annual, Balconies Building E	R
Appendix L	– Scenario 1, Existing Site - Average Wind Speeds (U_{mean})	T
Appendix M	– Scenario 2, Proposed Development - Average Wind Speeds (U_{mean})	BB
Appendix N	– Scenario 3, Proposed Development with Mitigation - Average Wind Speeds (U_{mean})	JJ

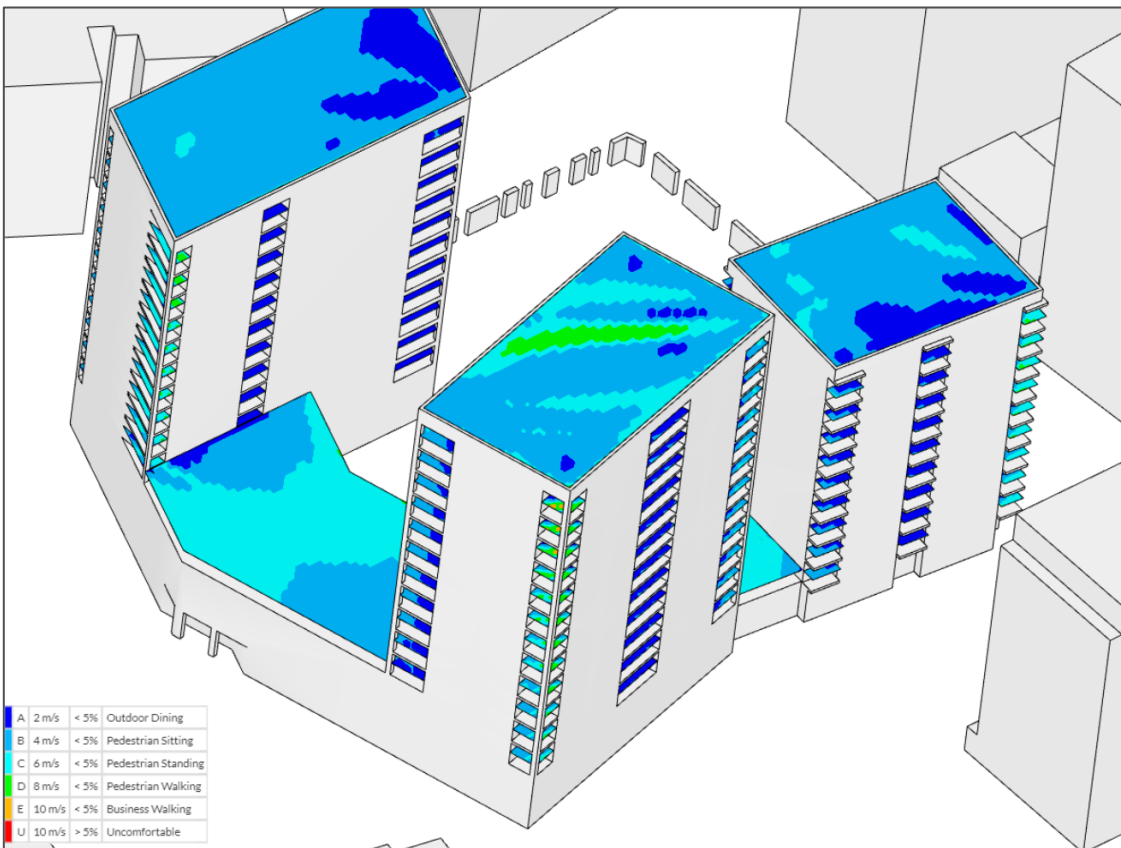
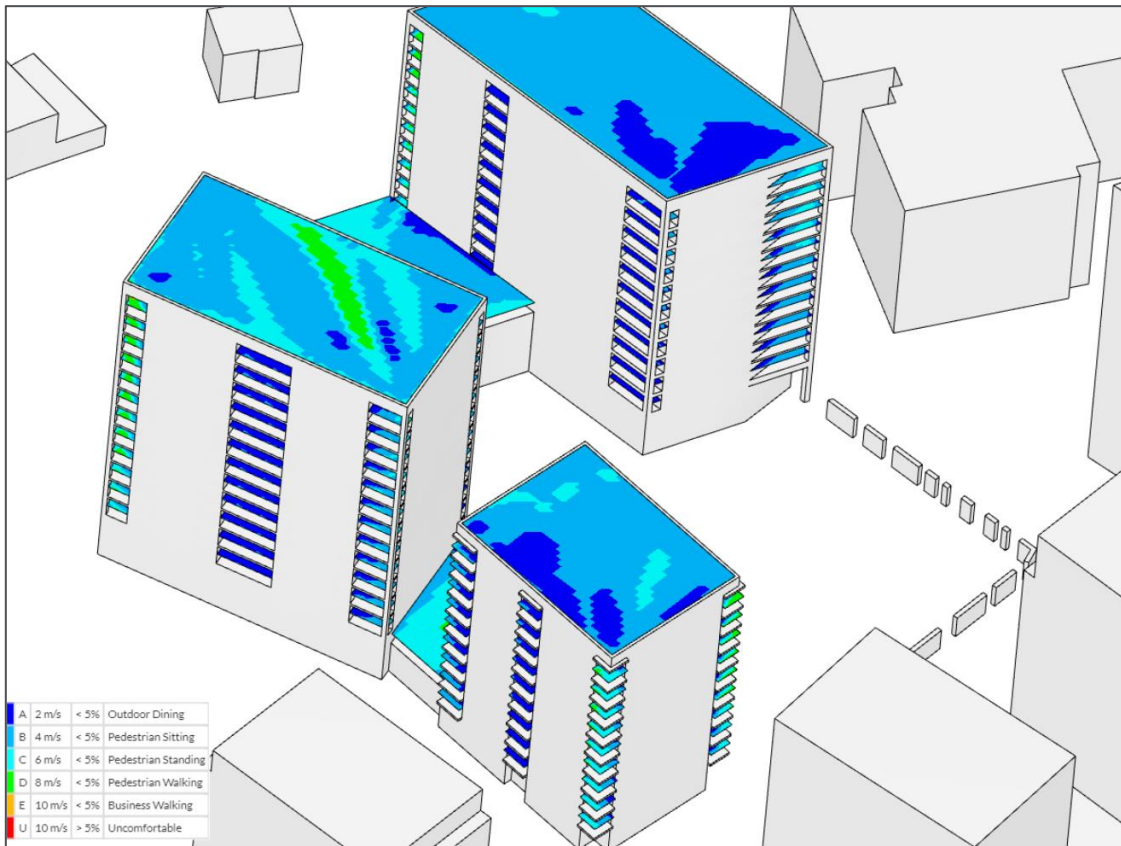
A large, teal-colored abstract graphic on the left side of the page. It consists of several overlapping, rounded rectangular shapes that create a sense of depth and movement. The shapes are oriented vertically, with the top ones appearing to be behind the bottom ones. The overall effect is a modern, geometric design element.

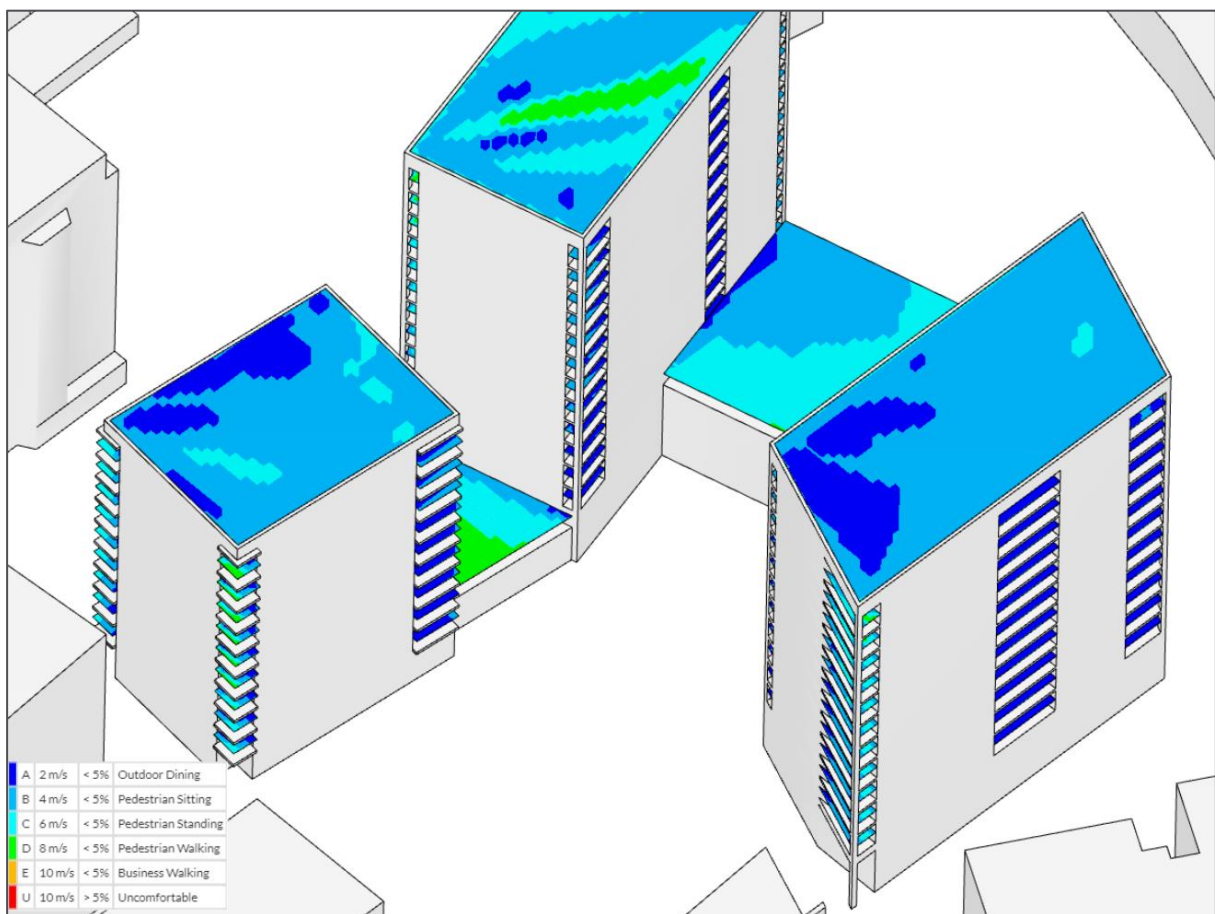
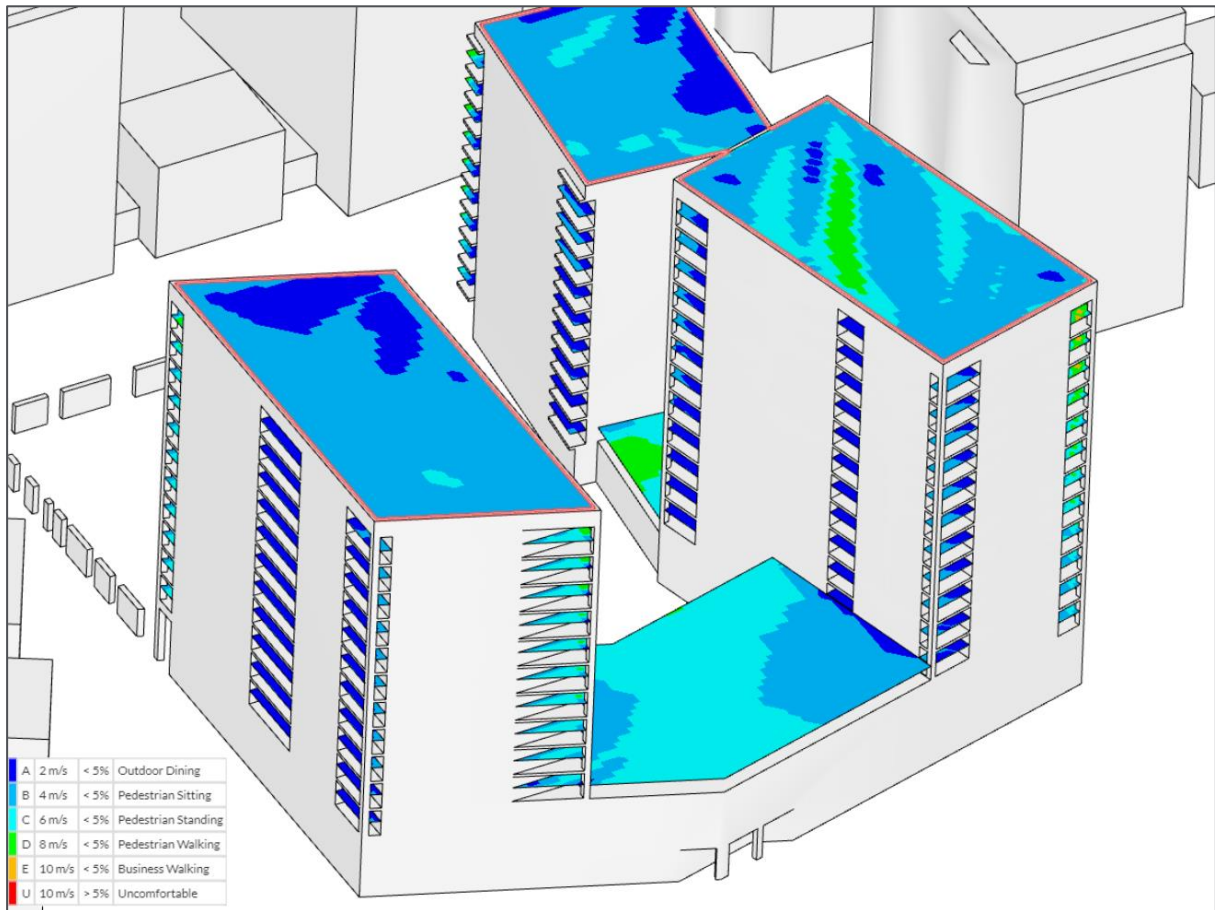
Appendices

Appendix B – Scenario 2. Lawson Comfort Conditions, Summer, Balconies Building B

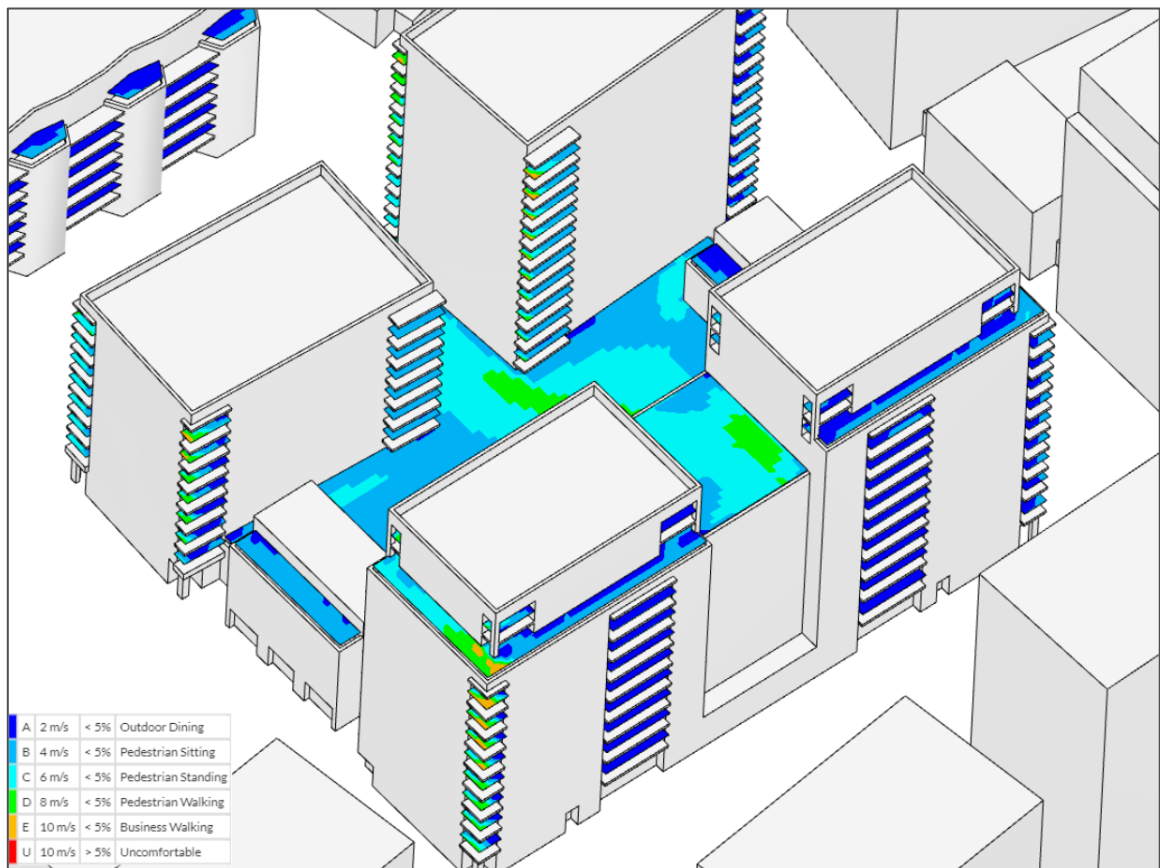
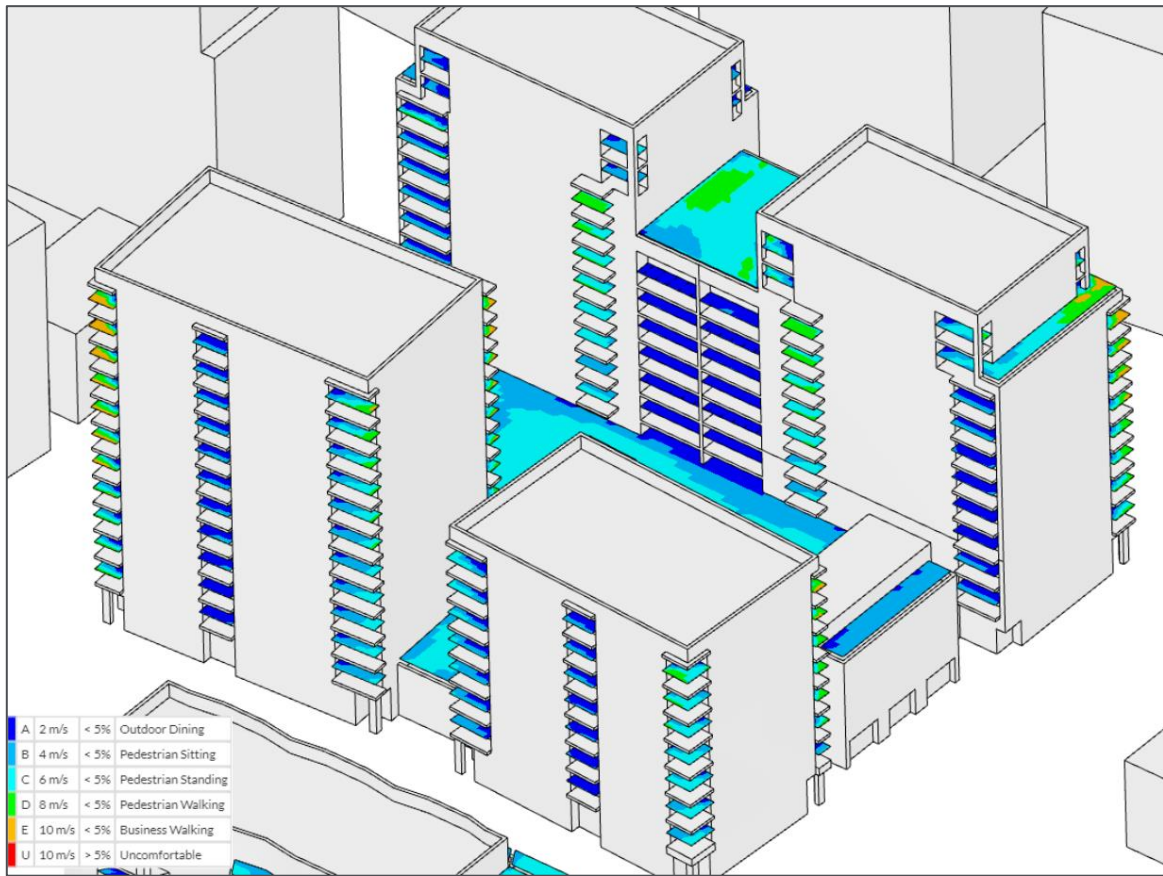


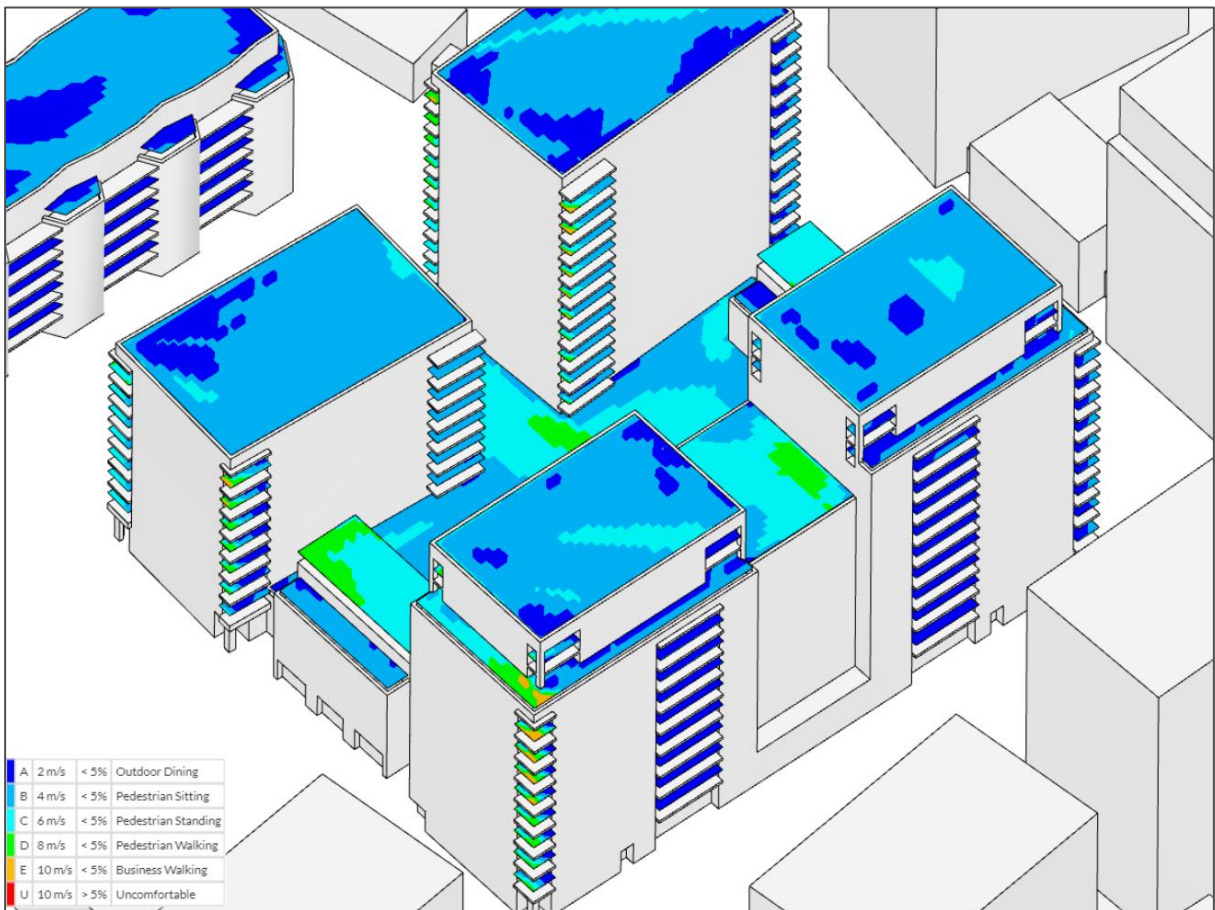
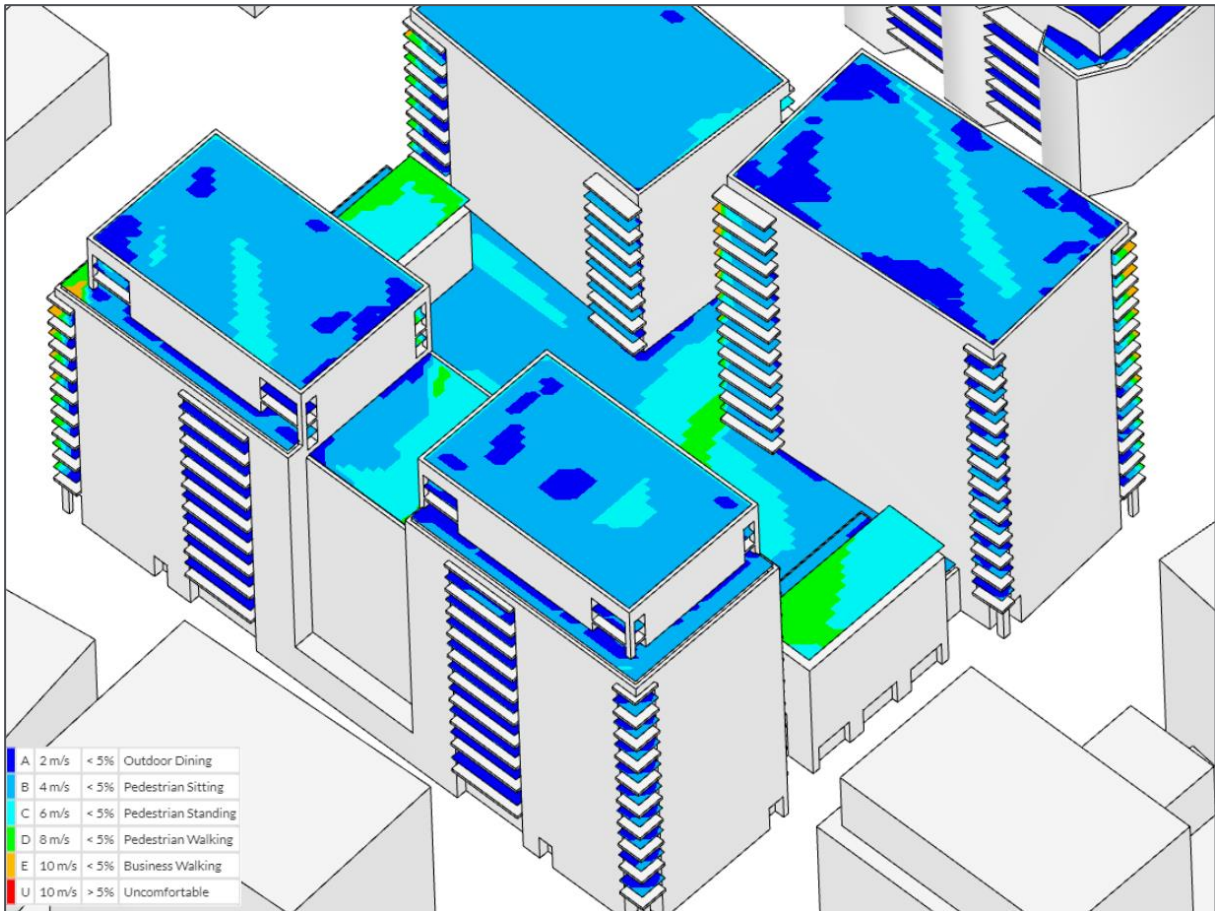
Appendix C – Scenario 2. Lawson Comfort Conditions, Summer, Balconies Building C



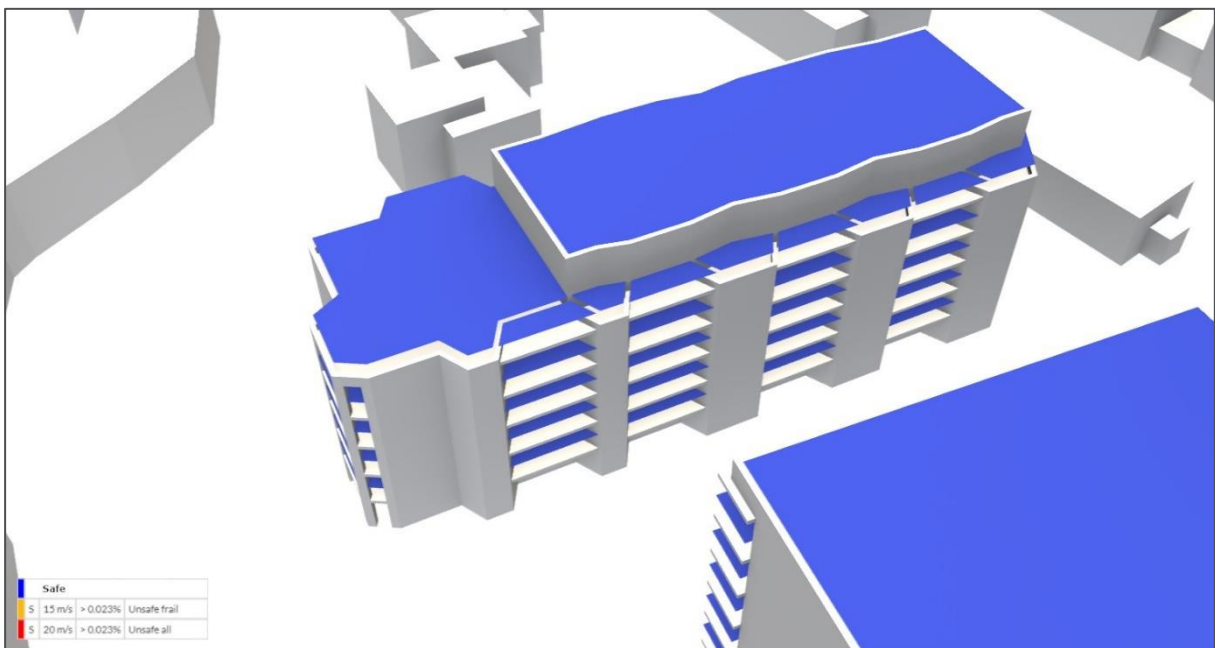
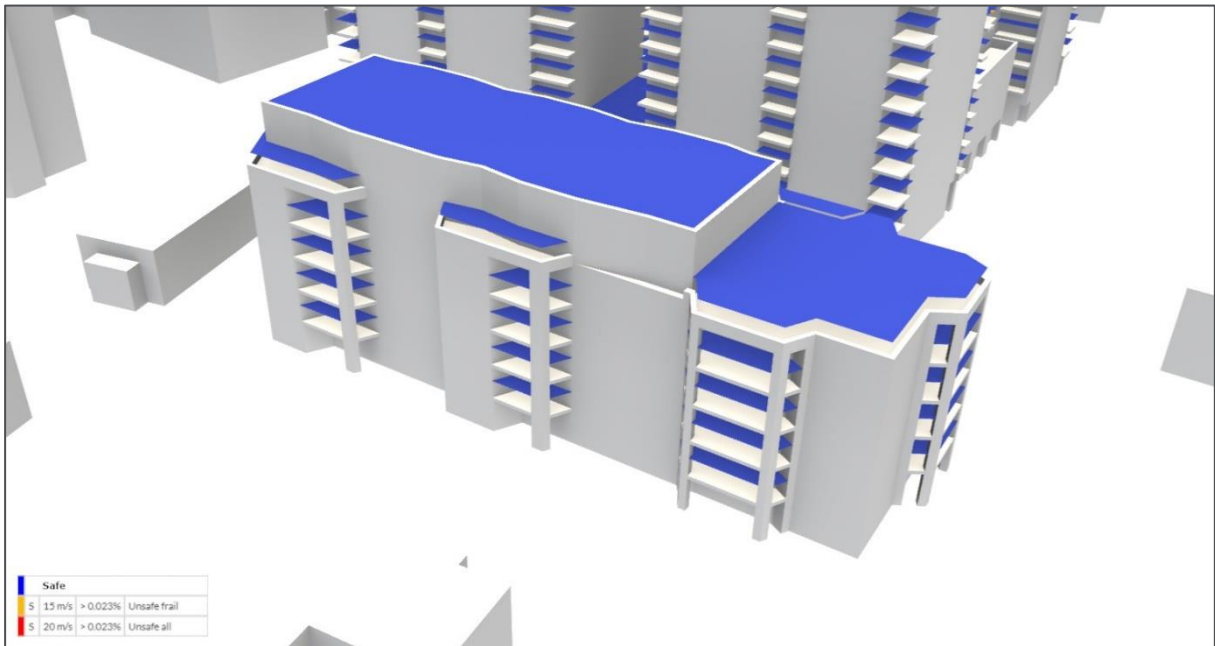


Appendix D – Scenario 2. Lawson Comfort Conditions, Summer, Balconies Building E

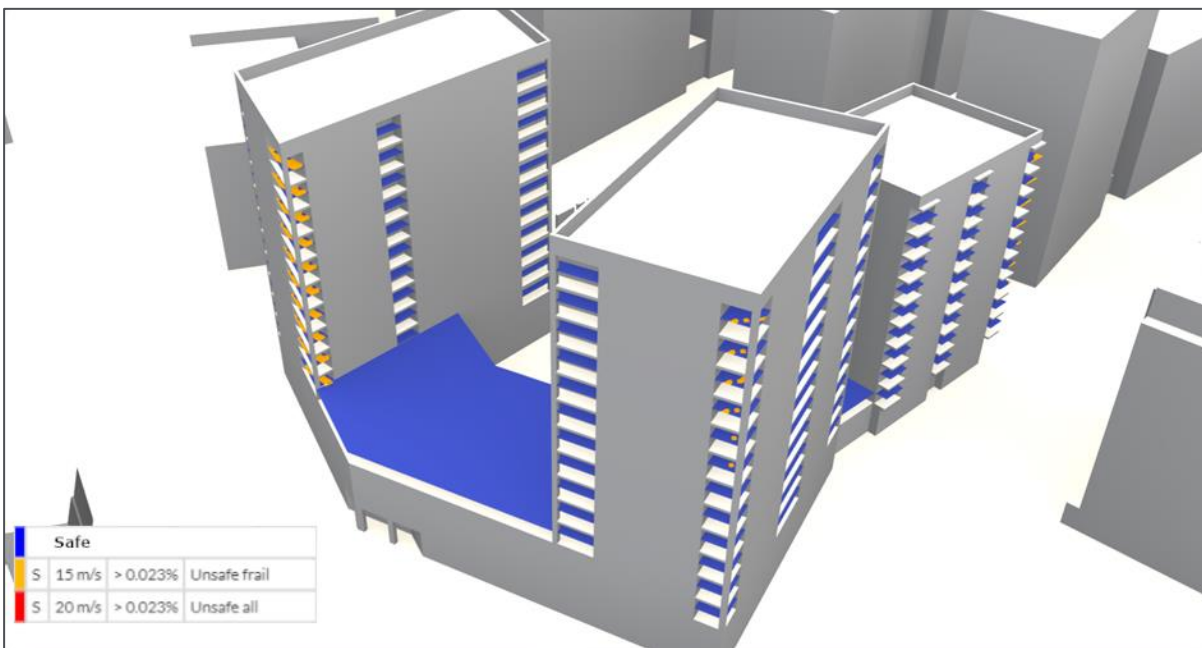
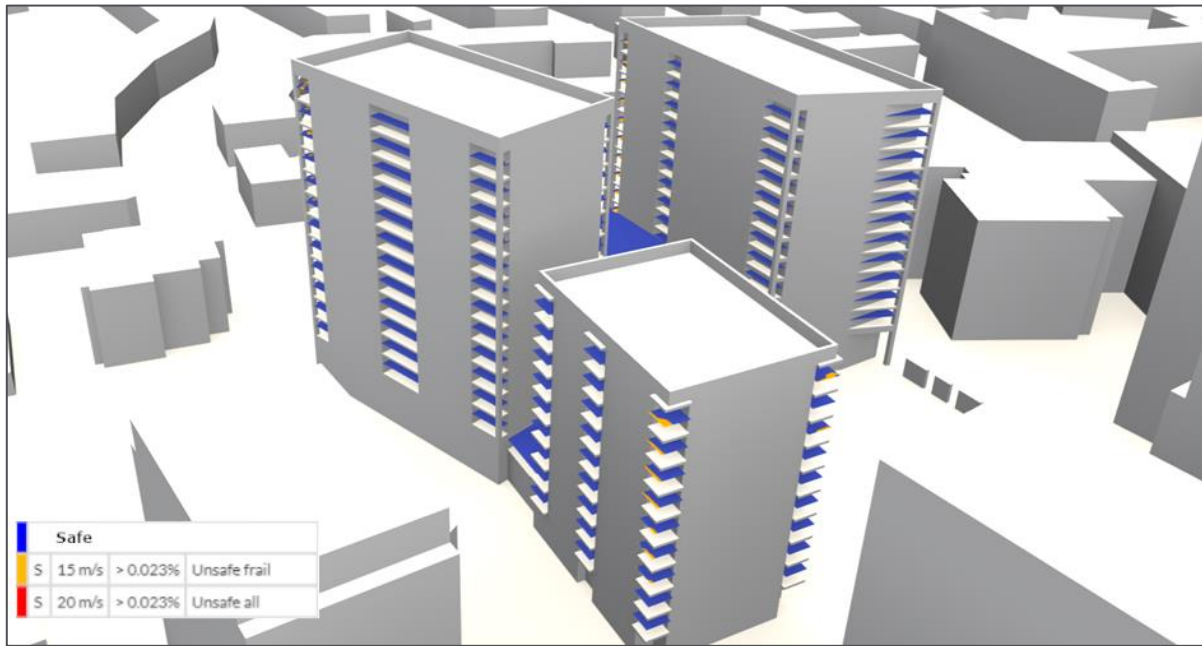


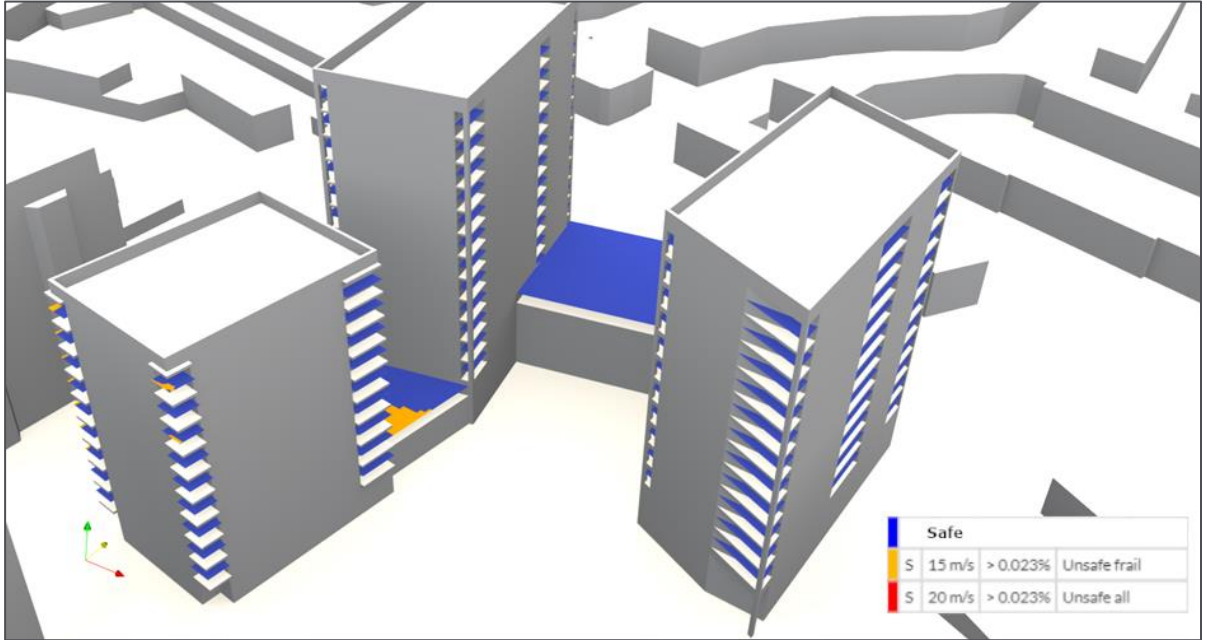
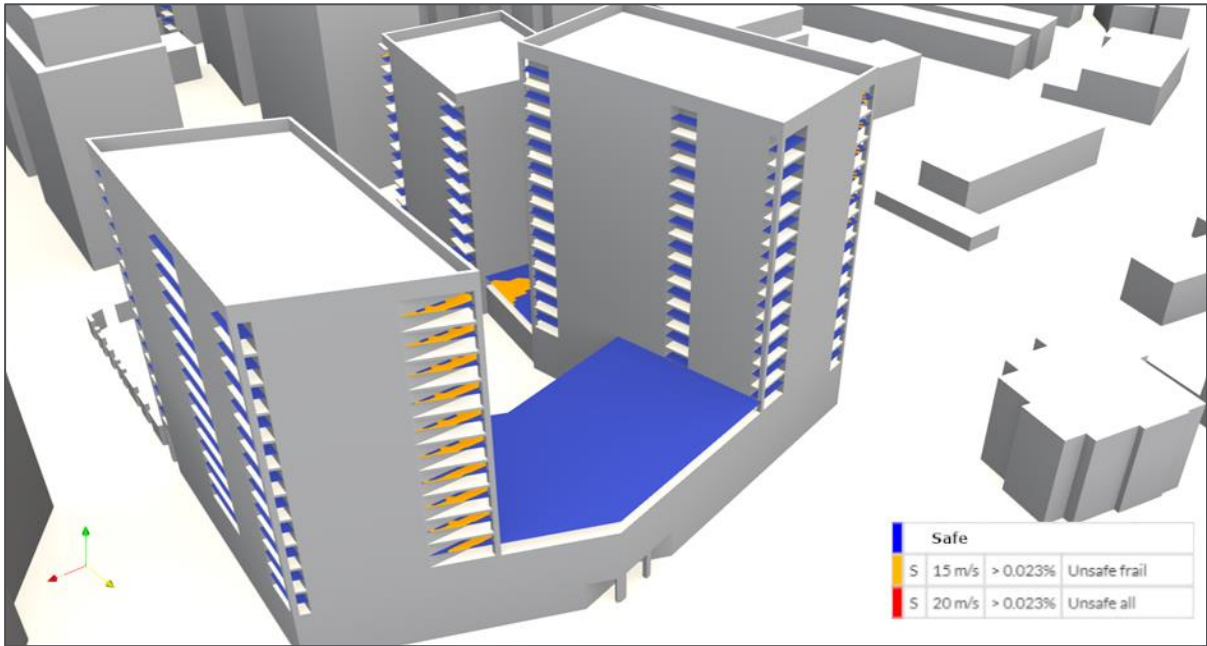


Appendix E – Scenario 2. Lawson Safe Conditions, Annual, Balconies Building B

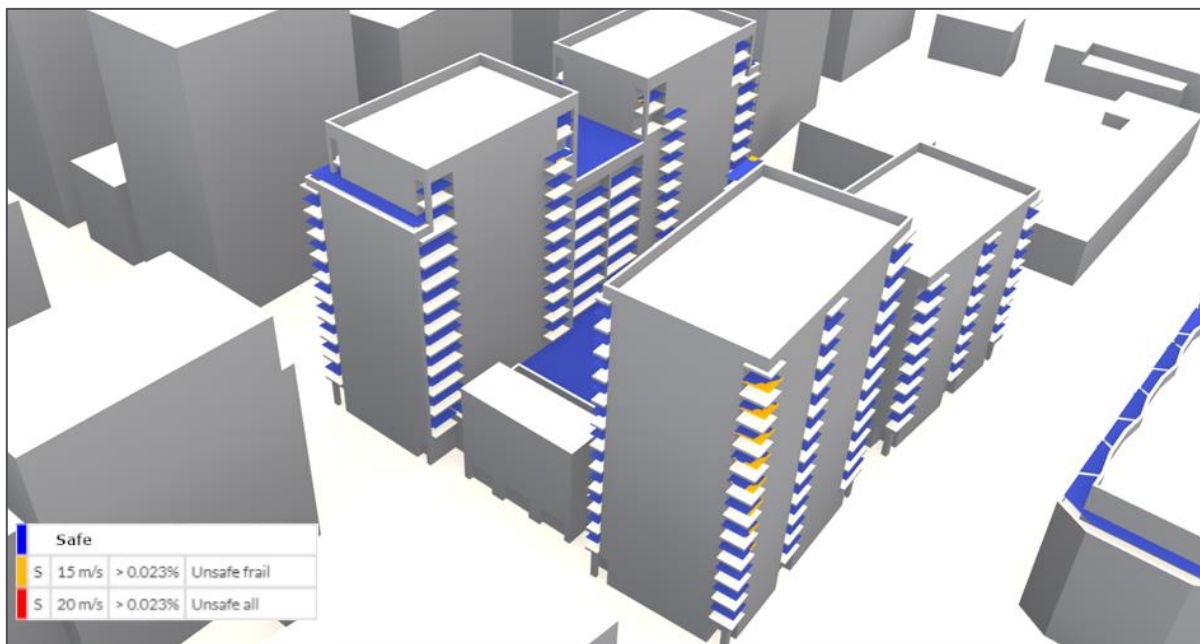
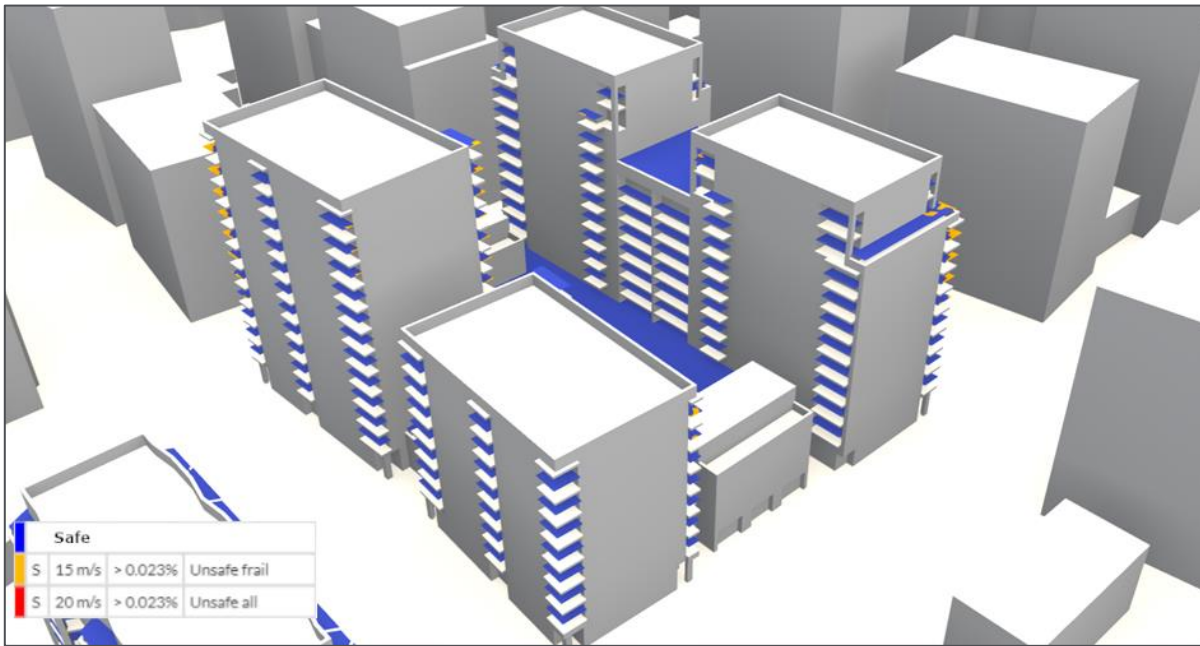


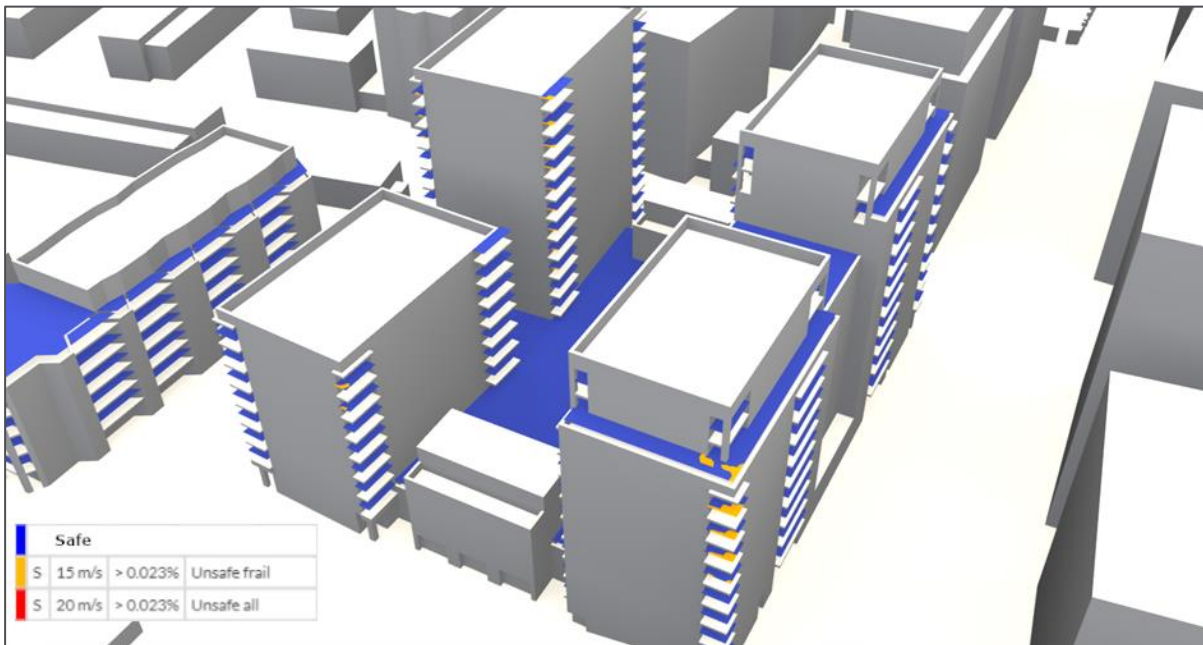
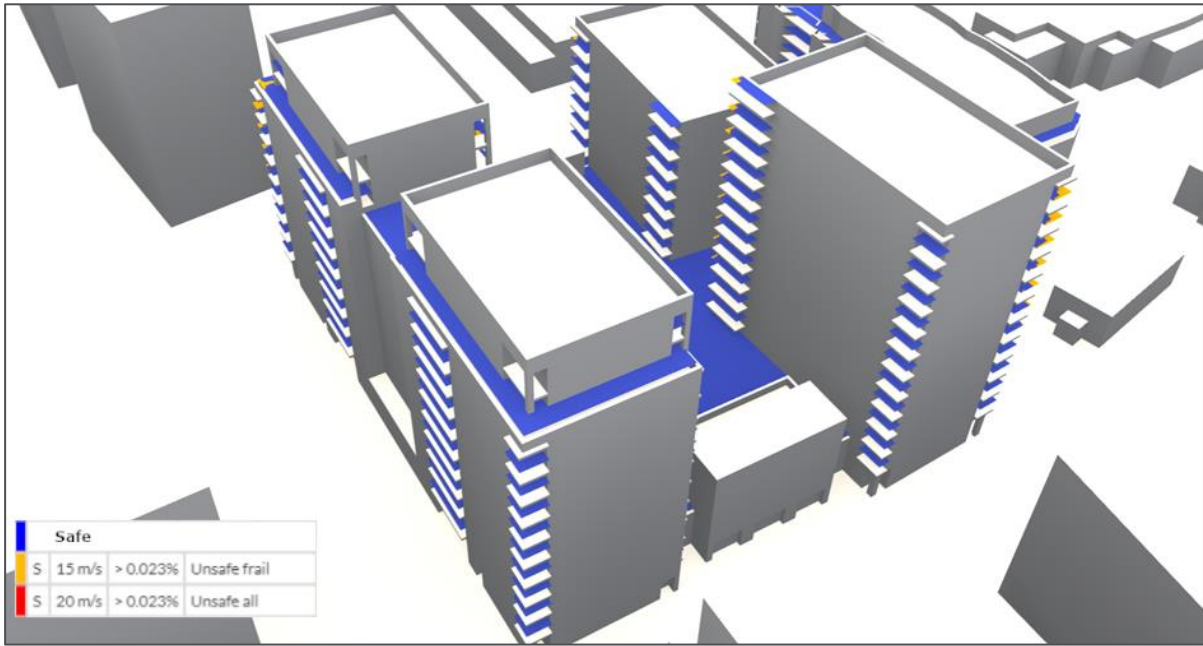
Appendix F – Scenario 2. Lawson Safe Conditions, Annual, Balconies Building C



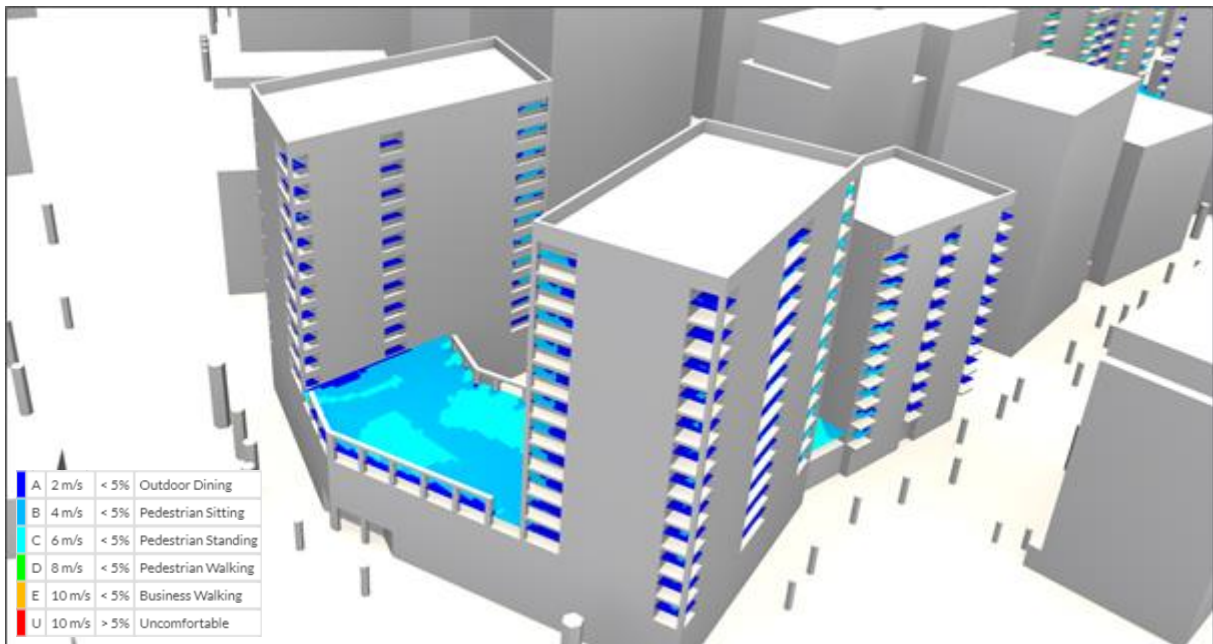
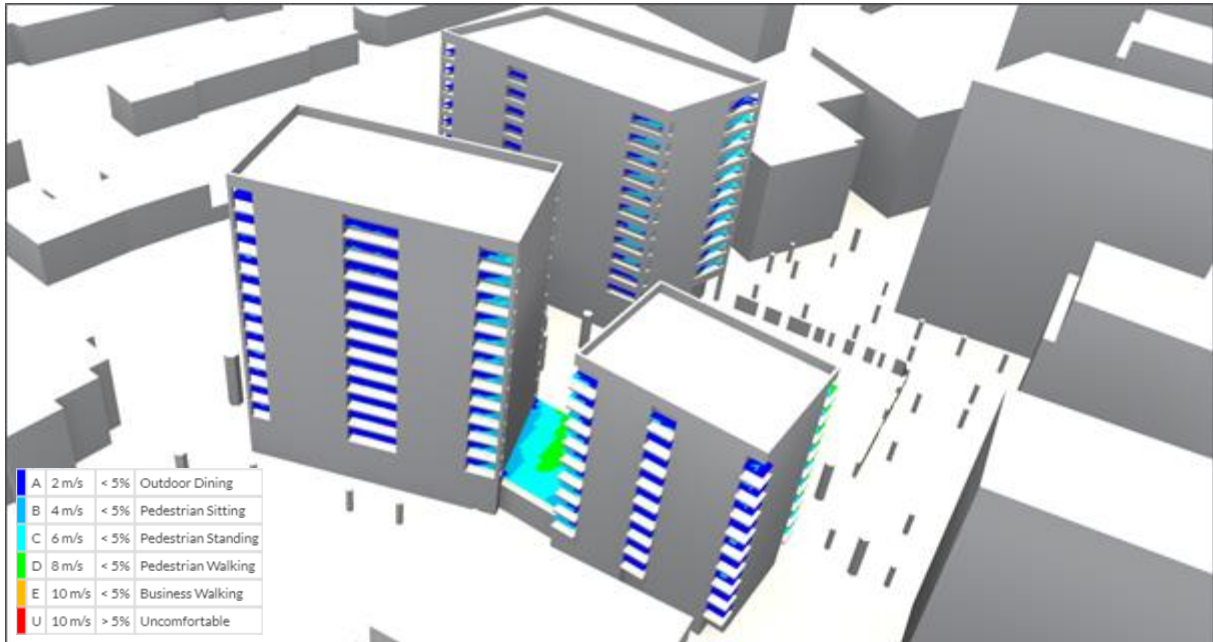


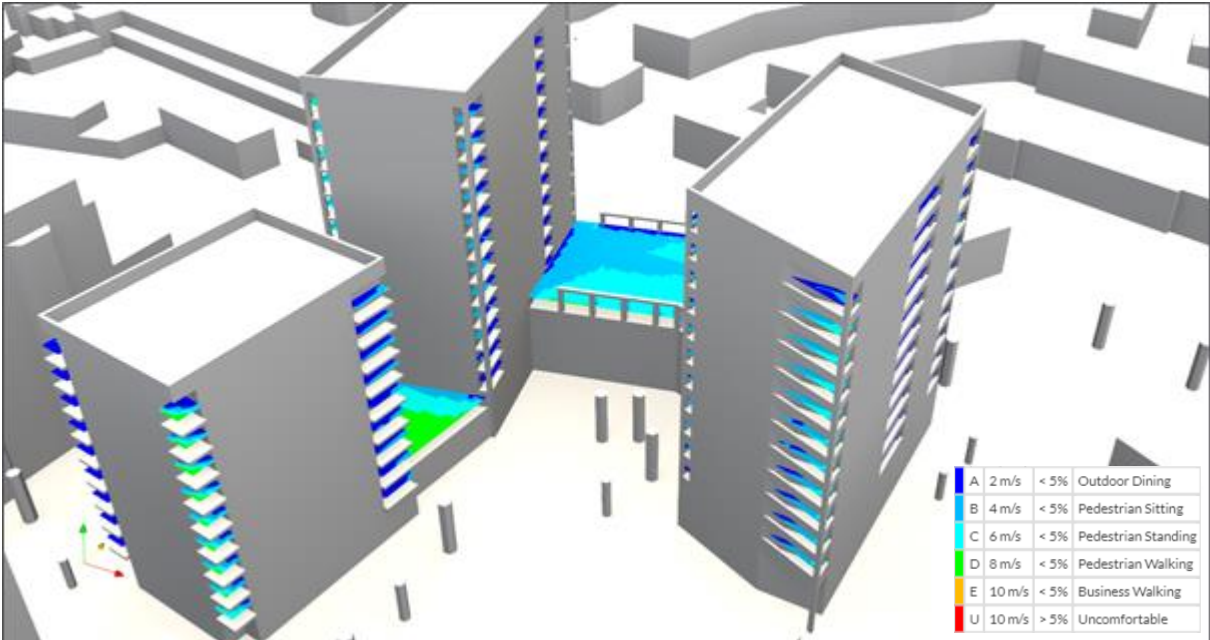
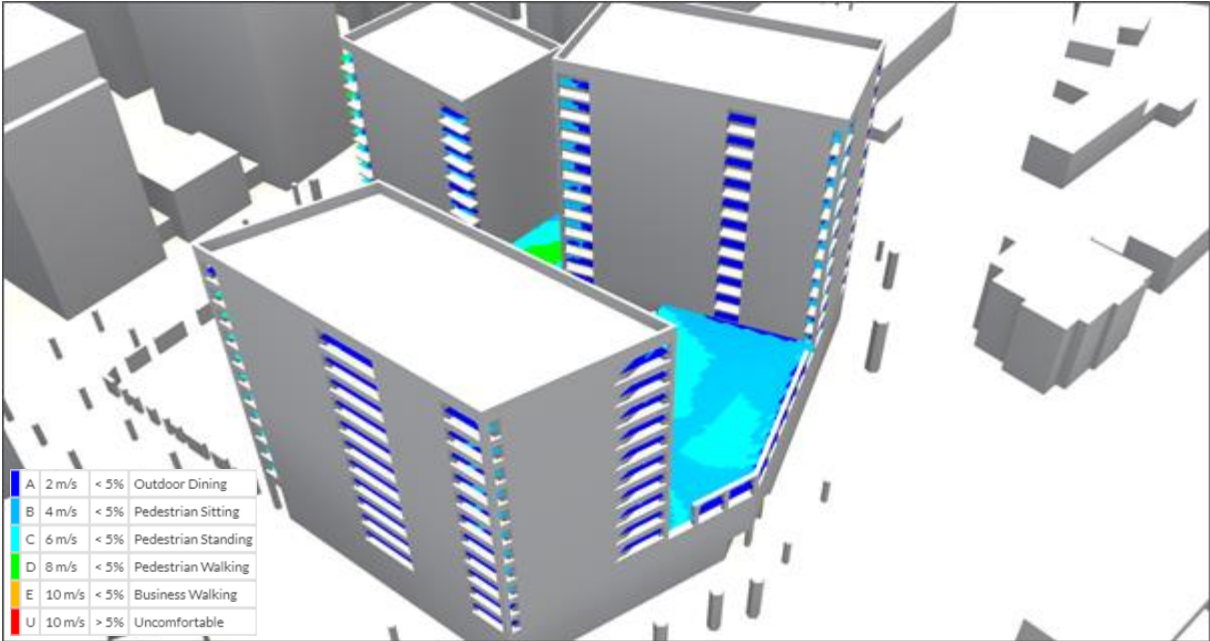
Appendix G – Scenario 2. Lawson Safe Conditions, Annual, Balconies Building E



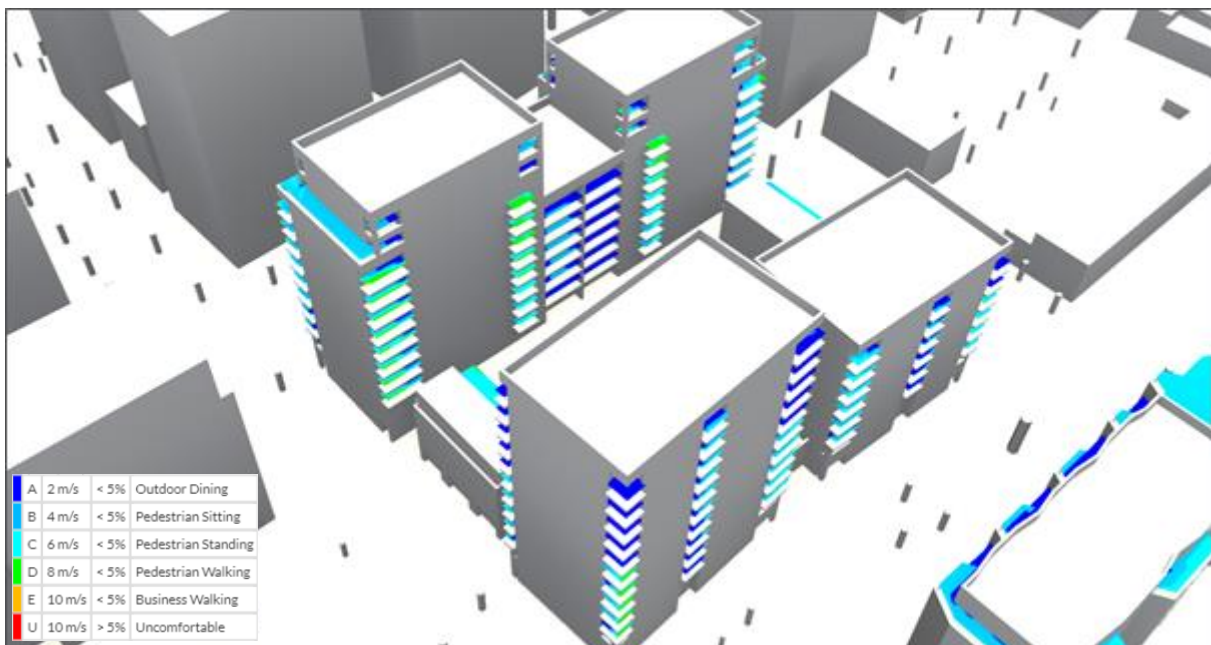
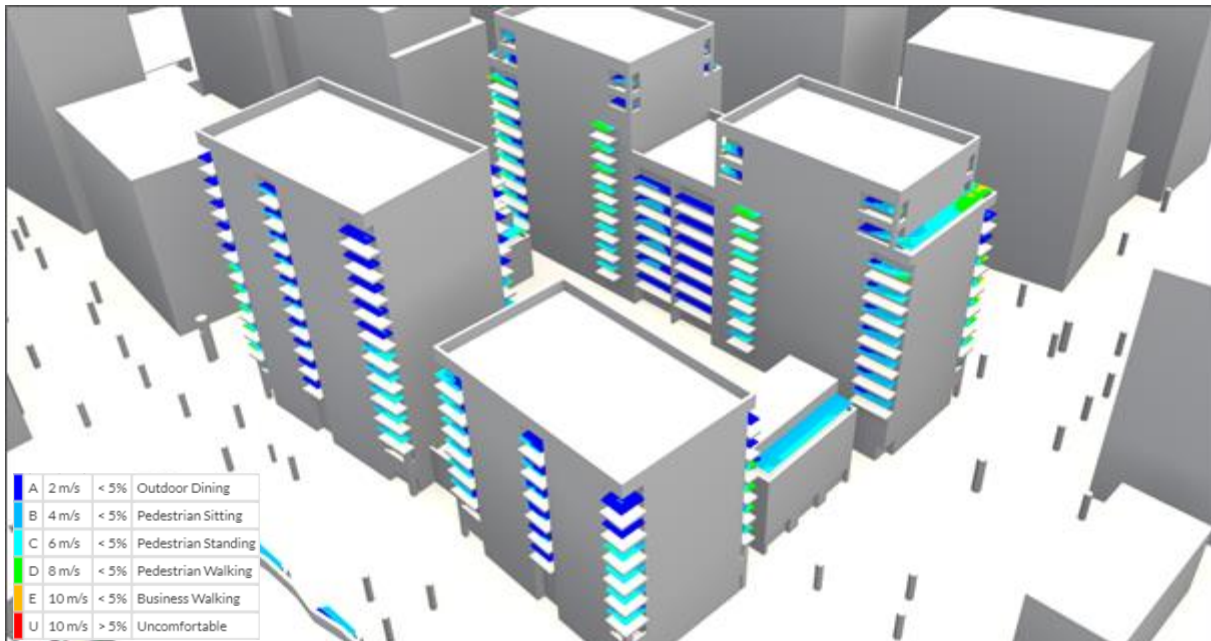


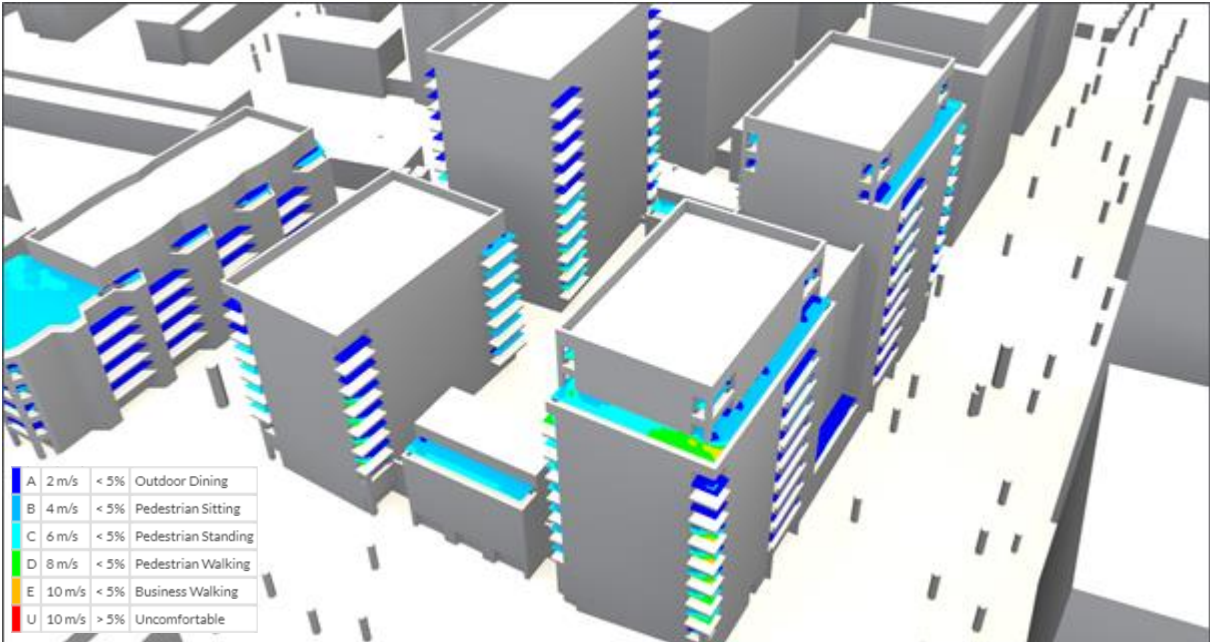
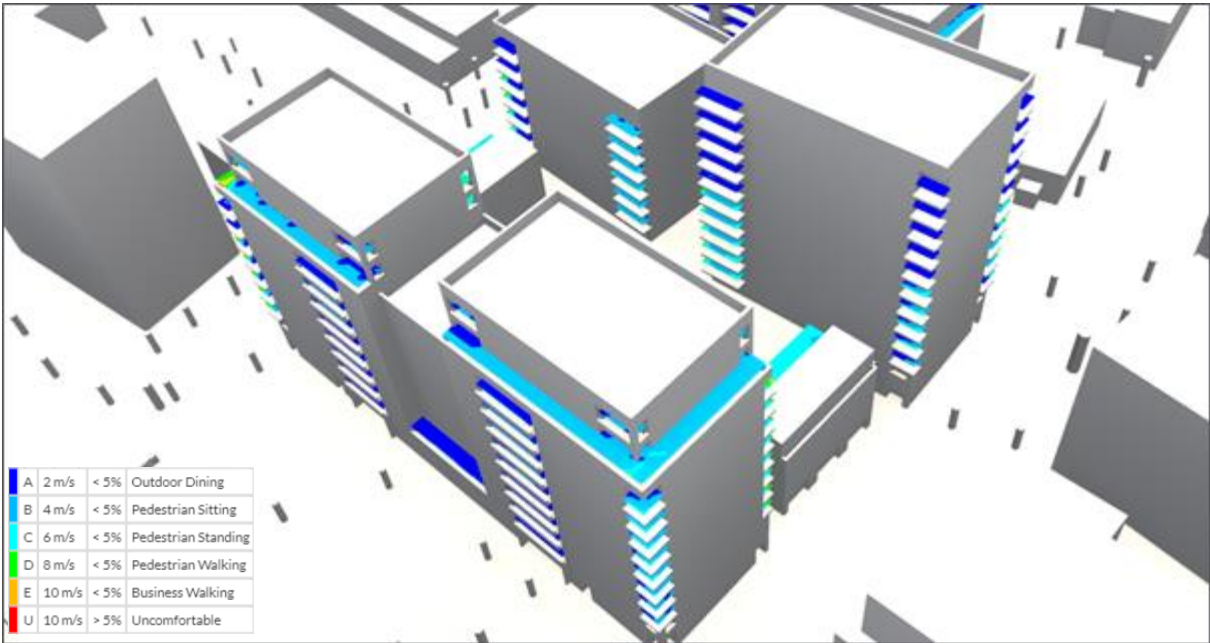
Appendix H – Scenario 3. Lawson Comfort Conditions, Summer, Balconies Building C



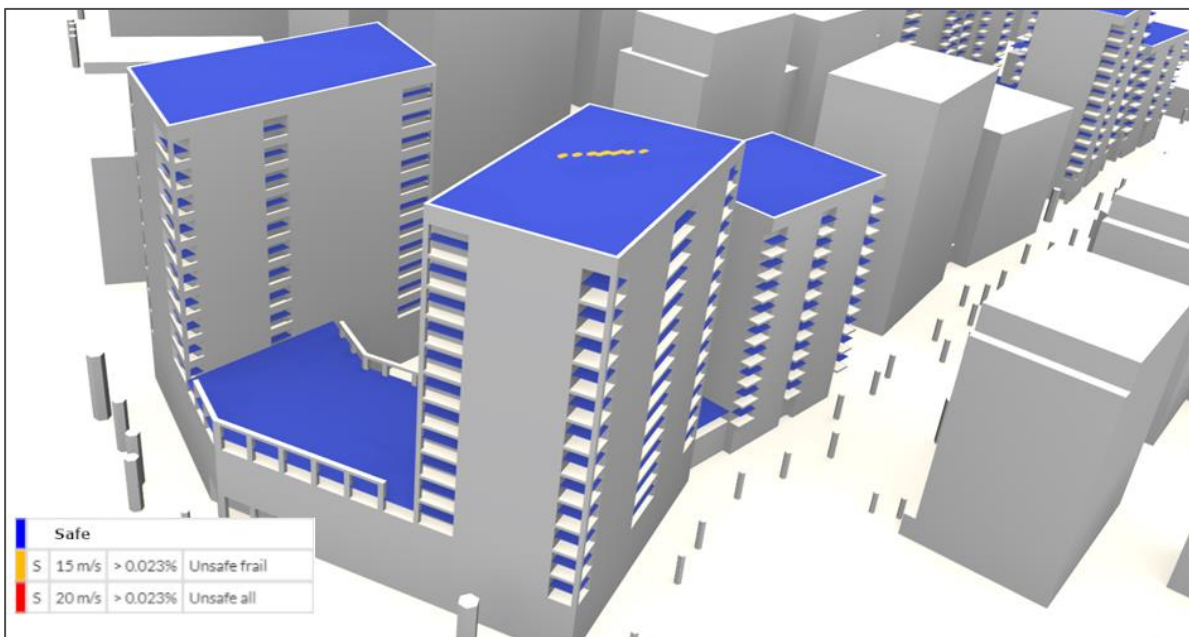
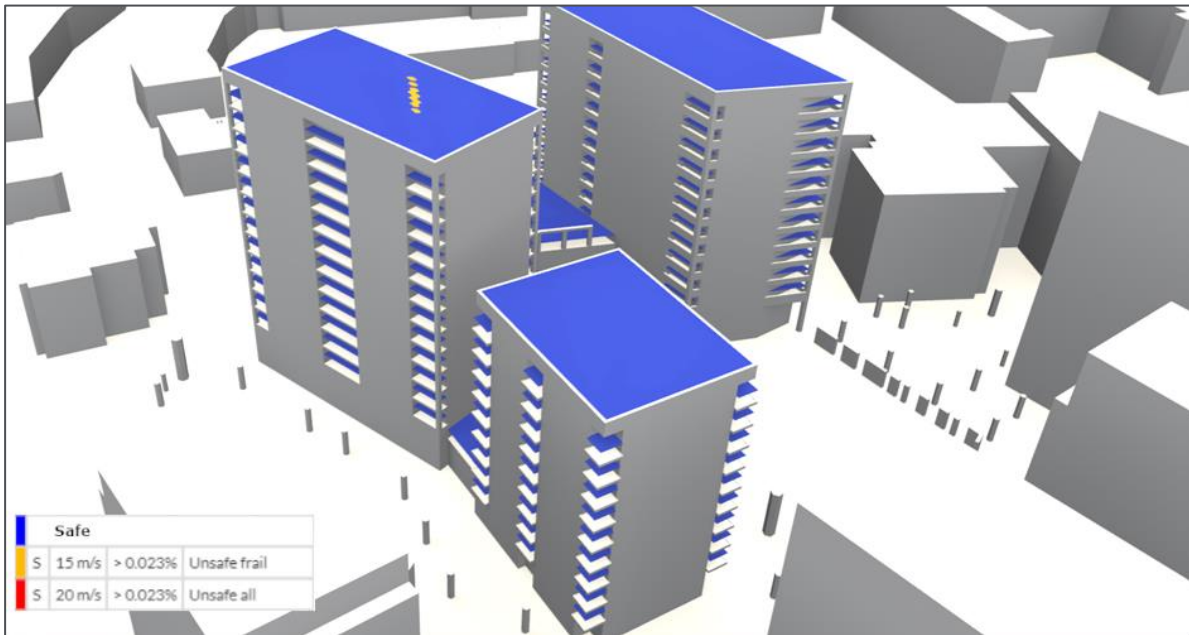


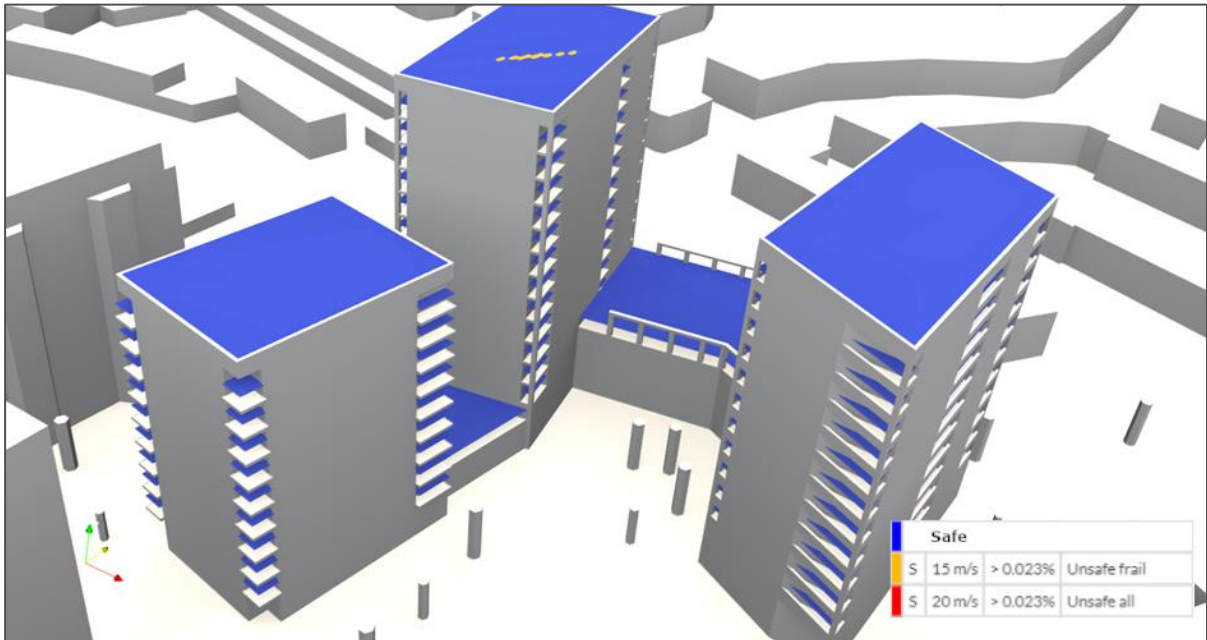
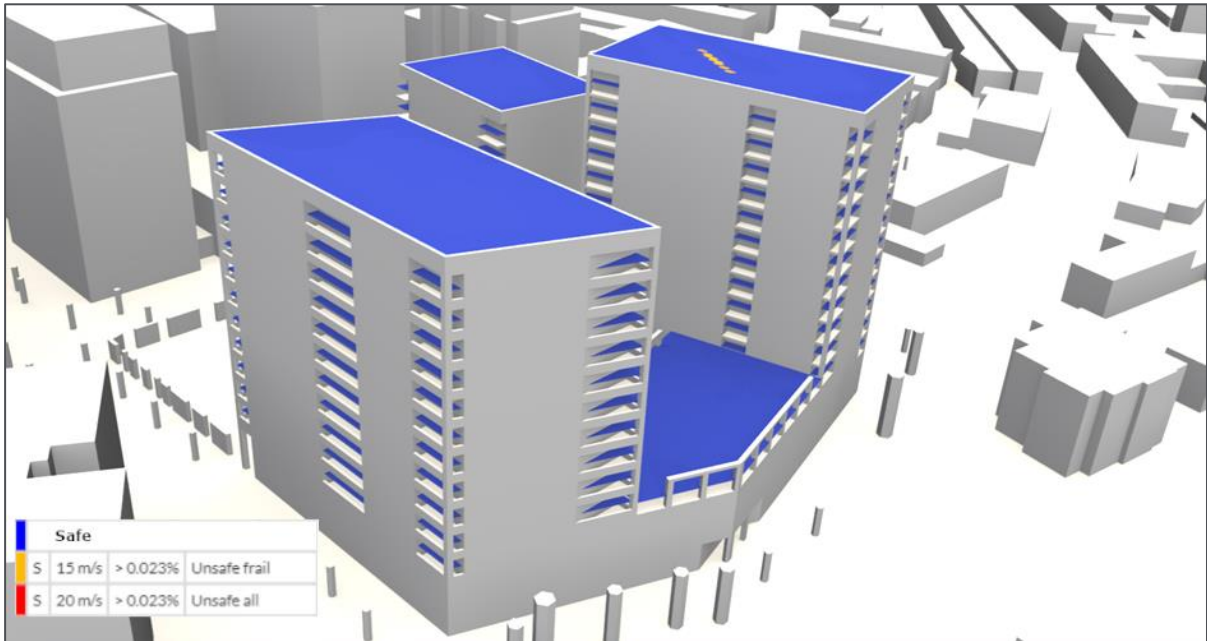
Appendix I – Scenario 3. Lawson Comfort Conditions, Summer, Balconies Building E



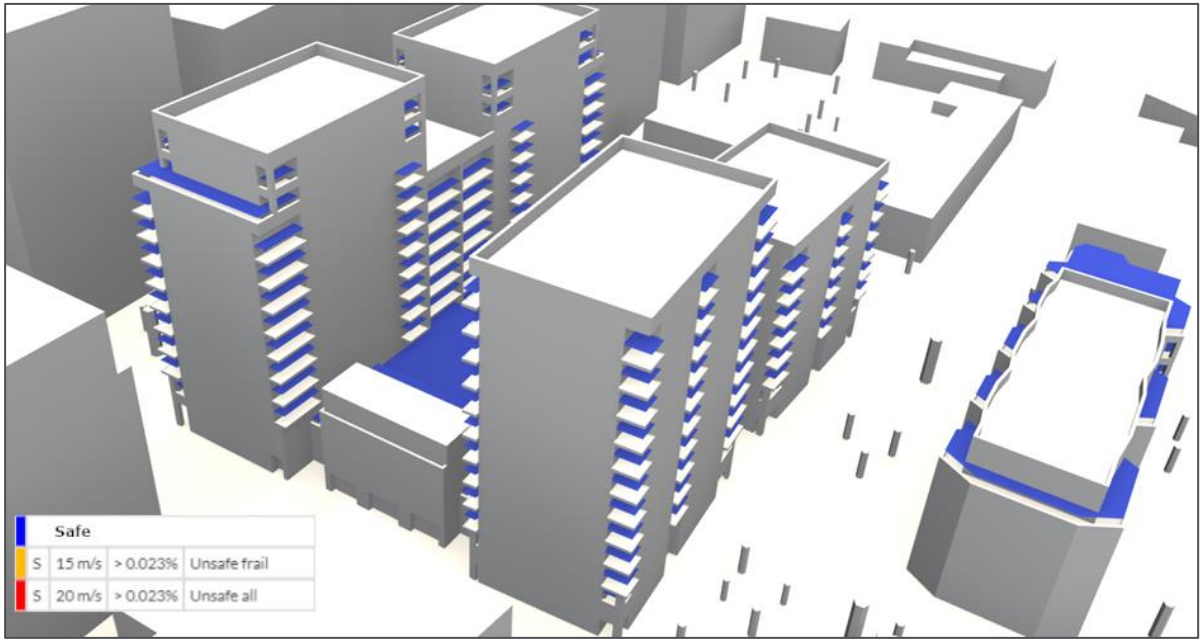
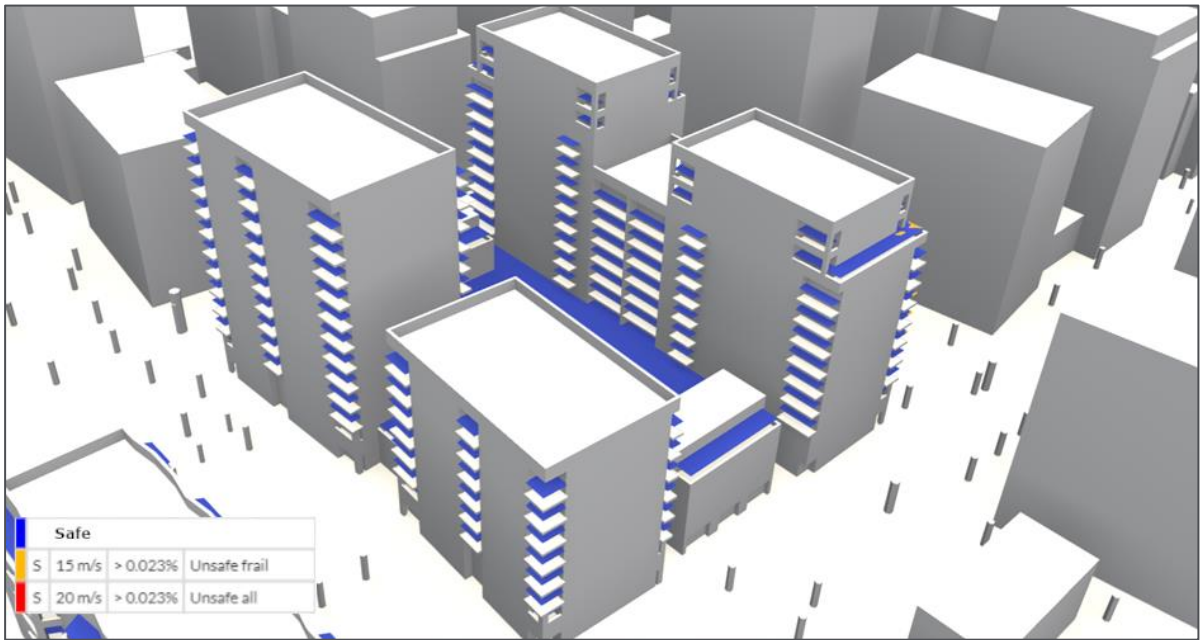


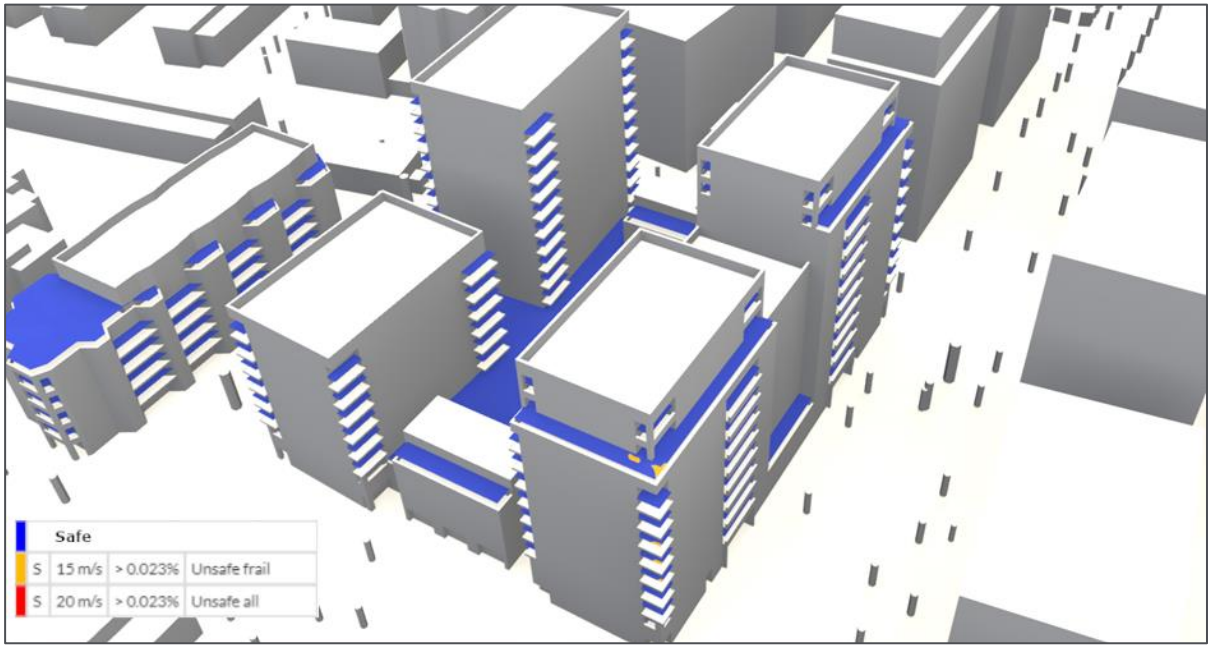
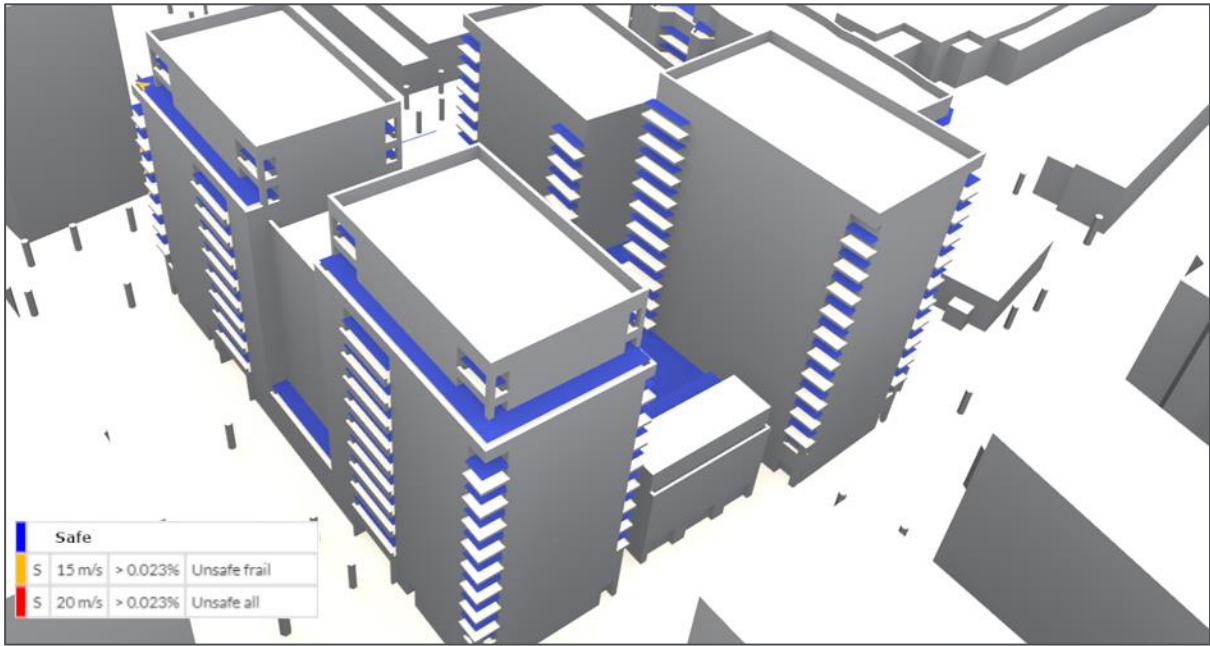
Appendix J Scenario 3. Lawson Safe Conditions, Annual, Balconies Building C



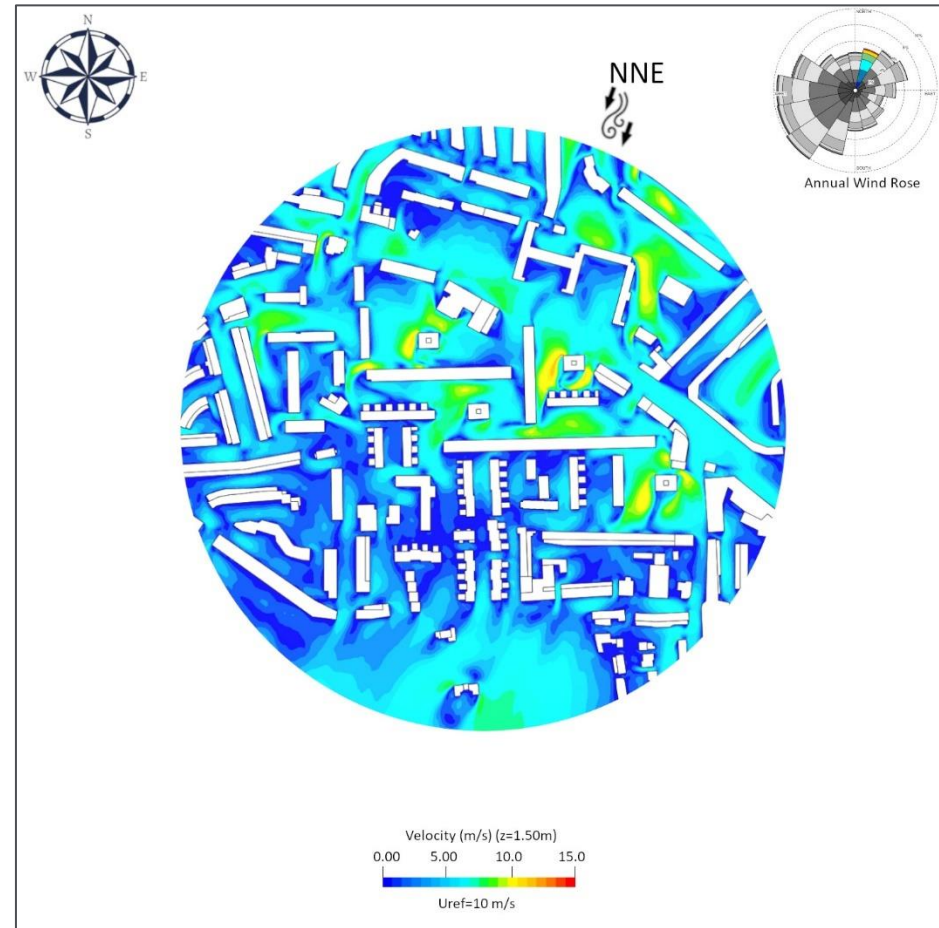
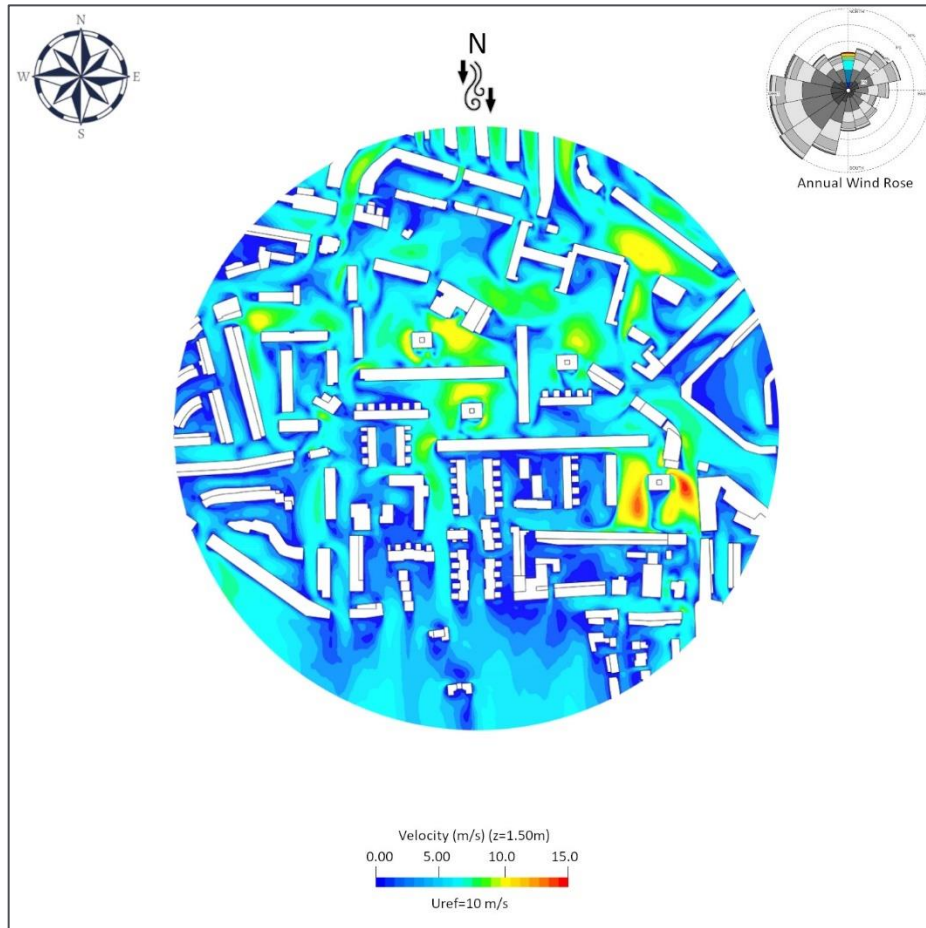


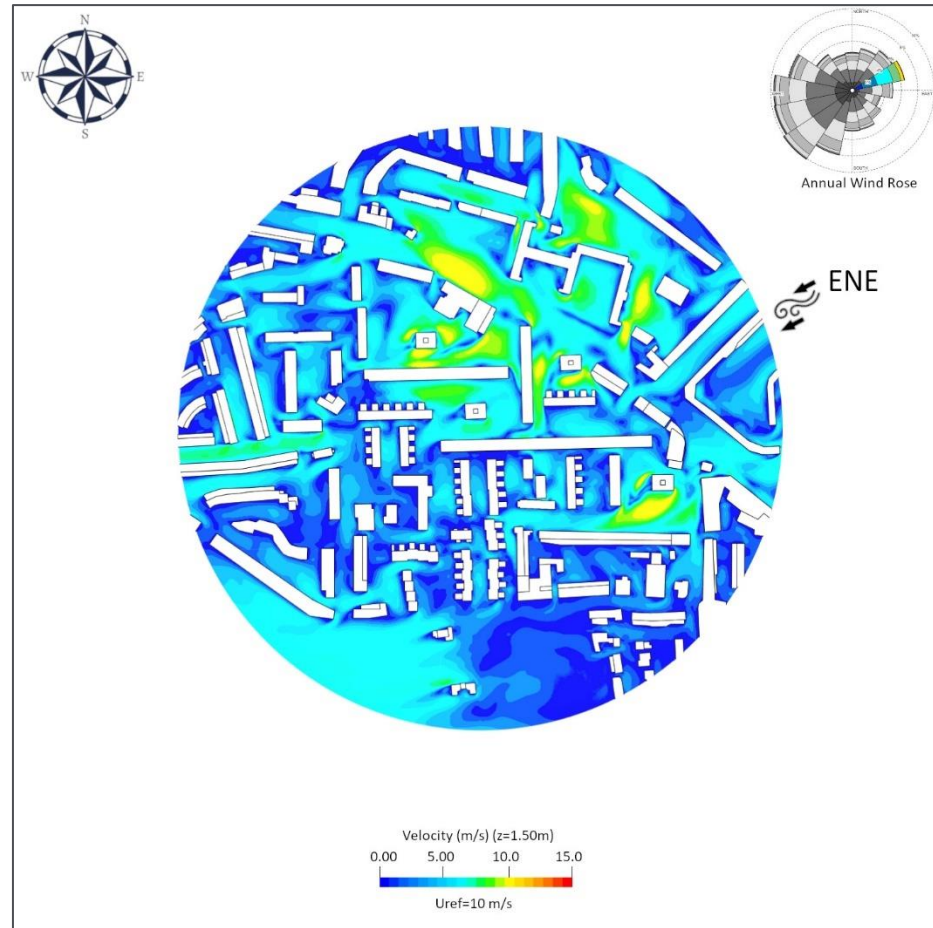
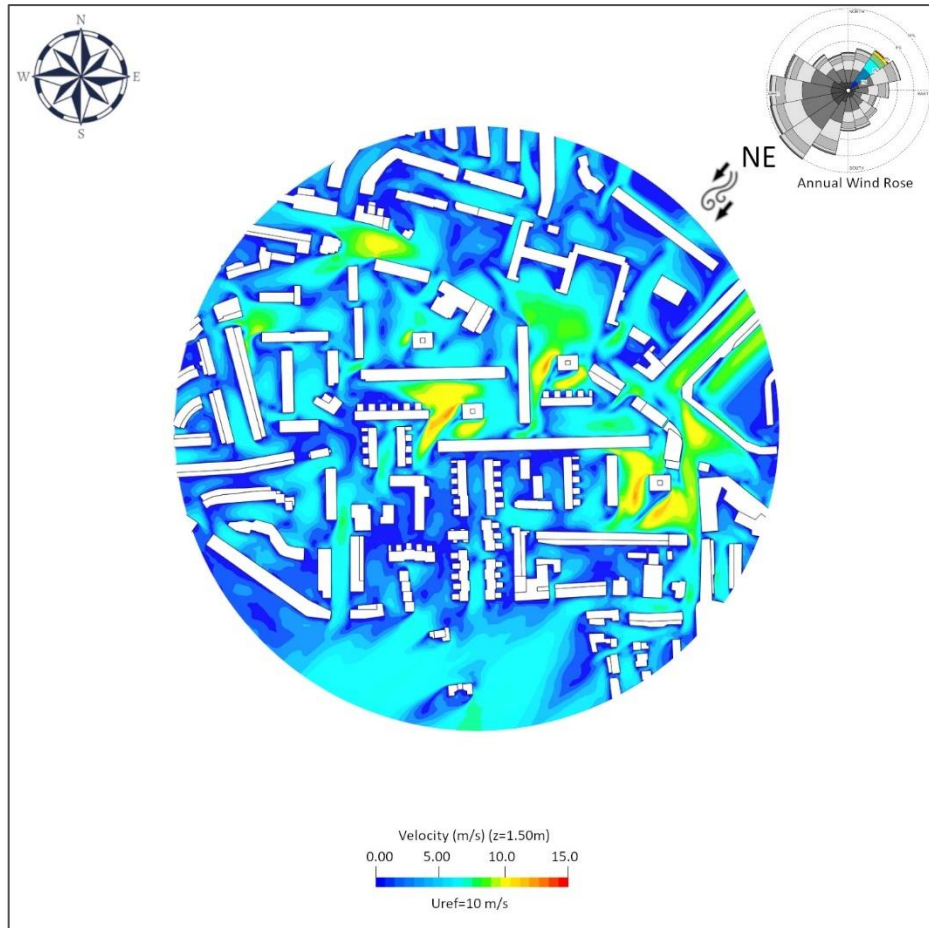
Appendix K – Scenario 3. Lawson Safe Conditions, Annual, Balconies Building E

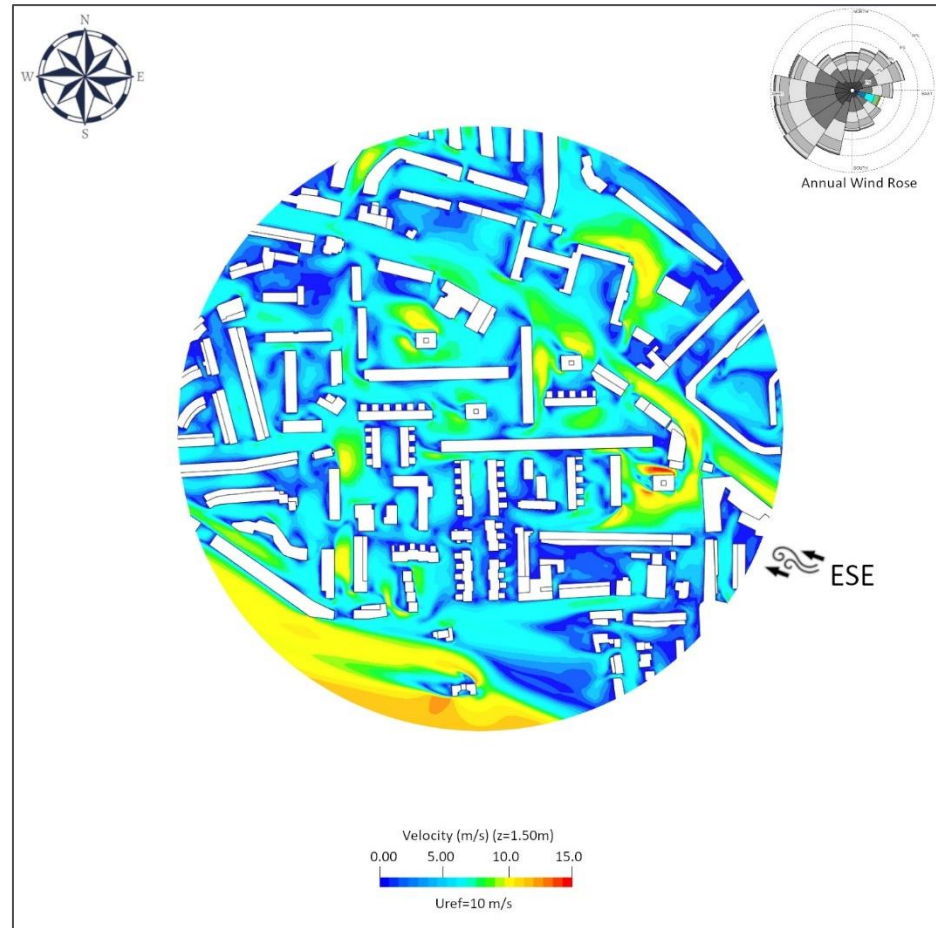
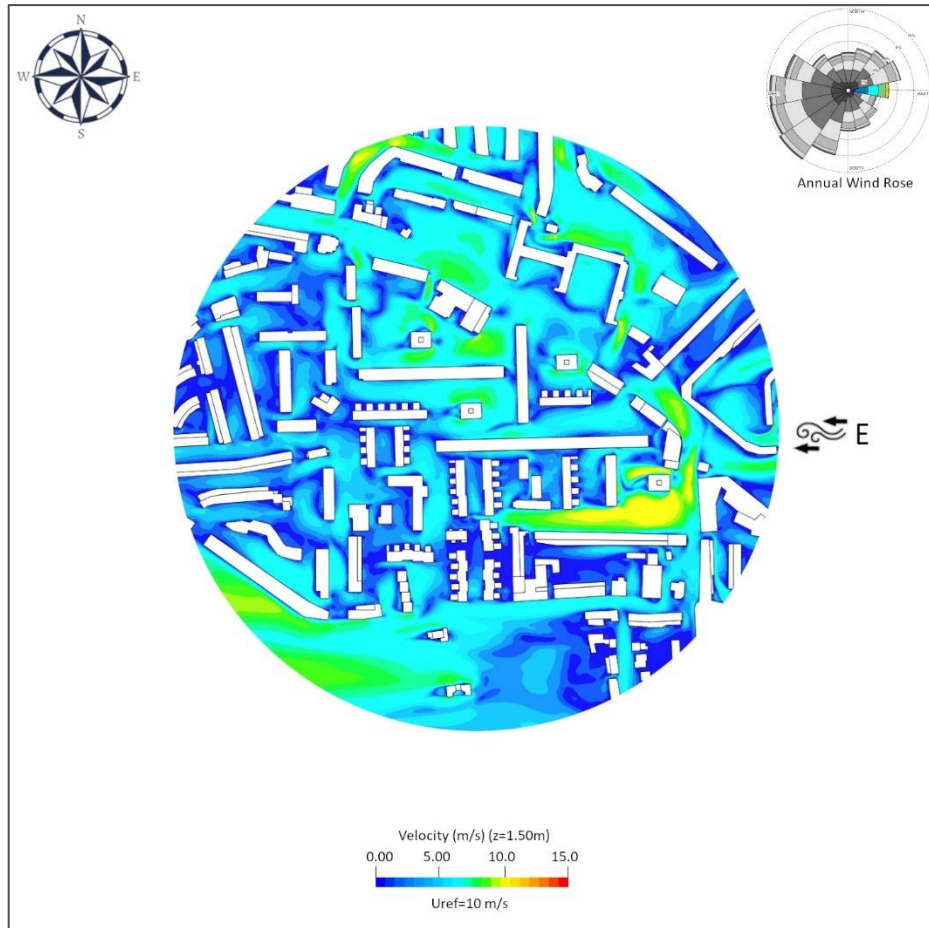


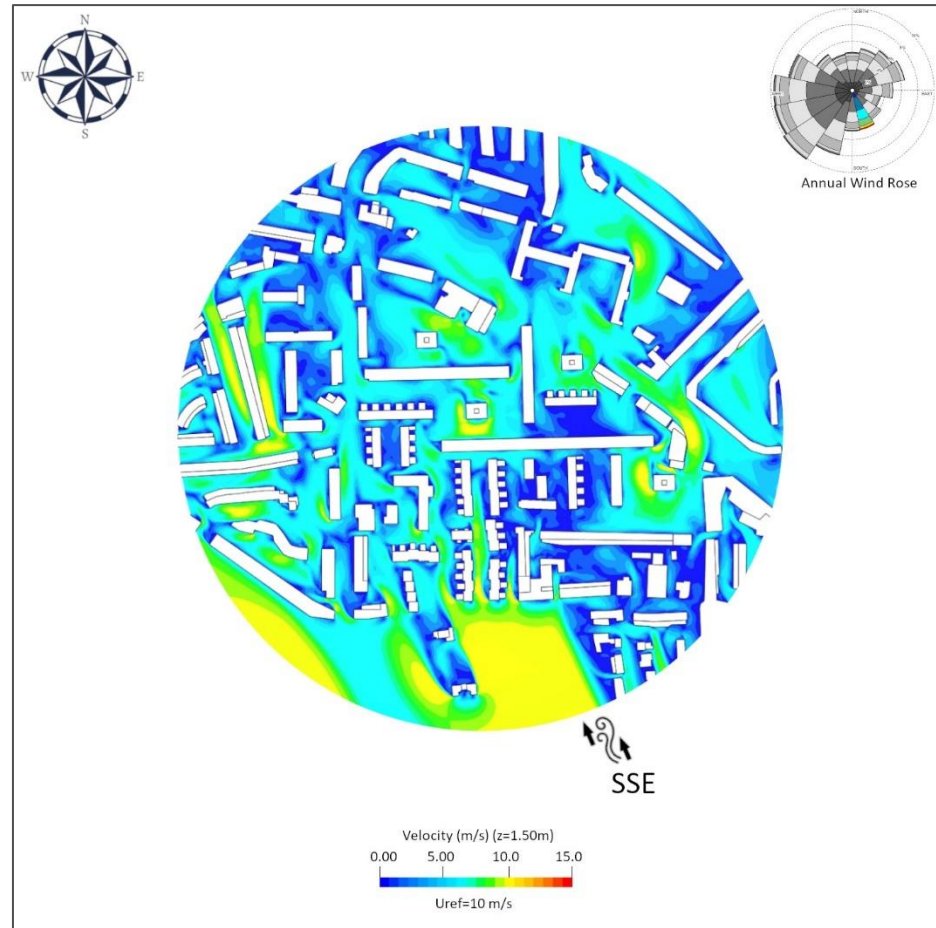
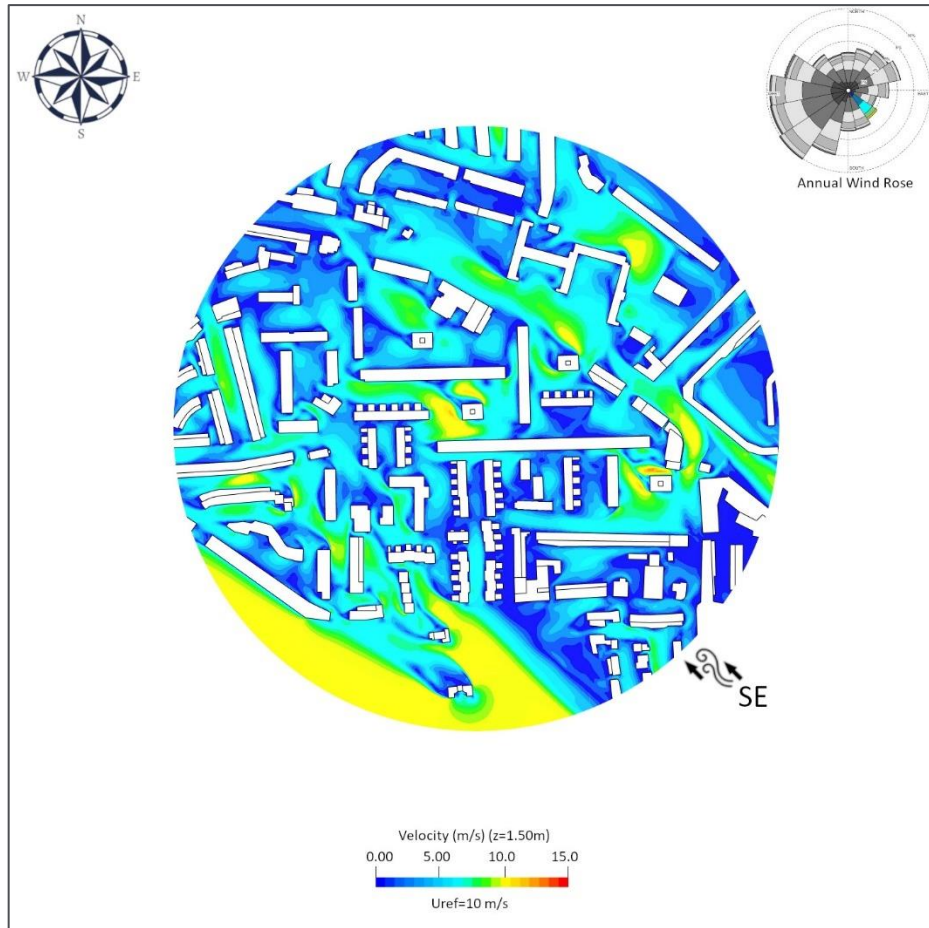


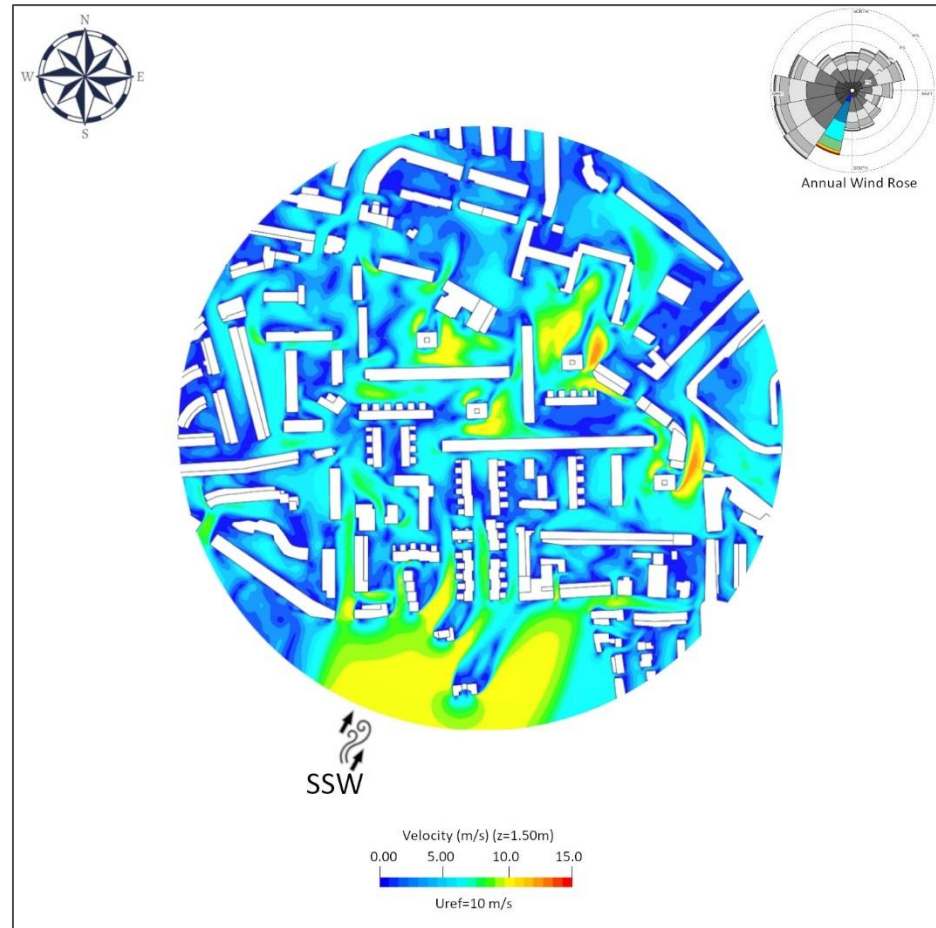
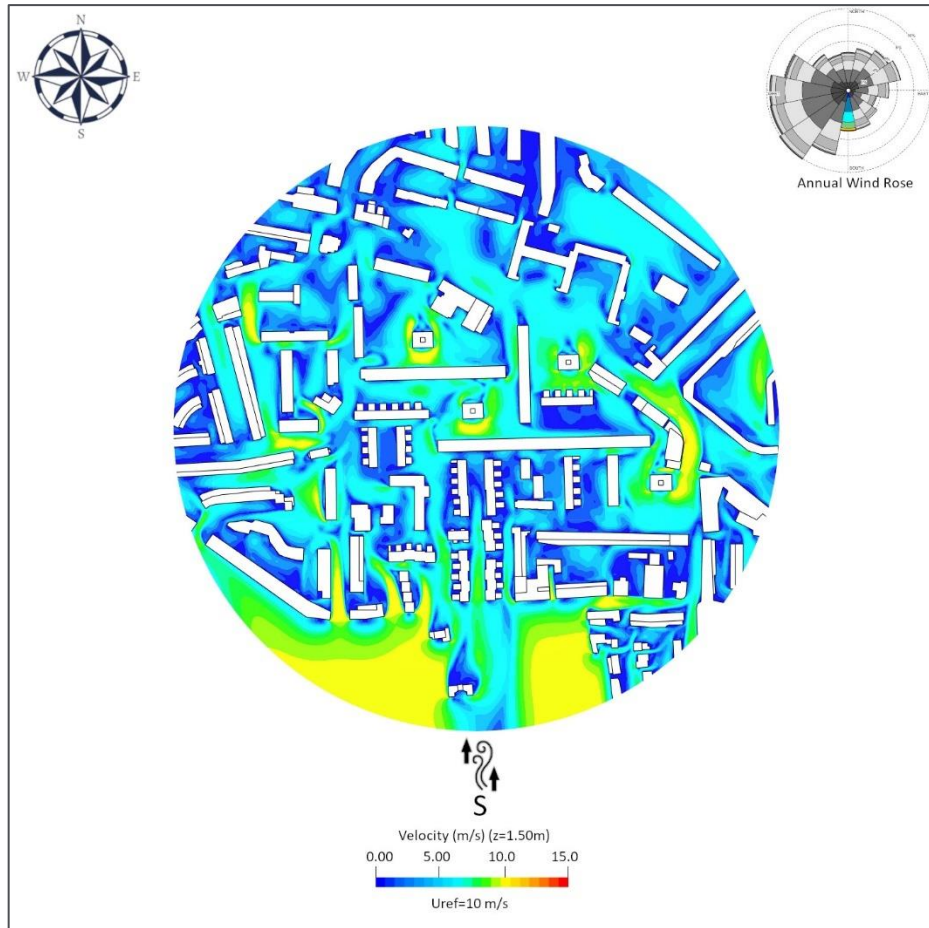
Appendix L – Scenario 1, Existing Site - Average Wind Speeds (U_{mean})

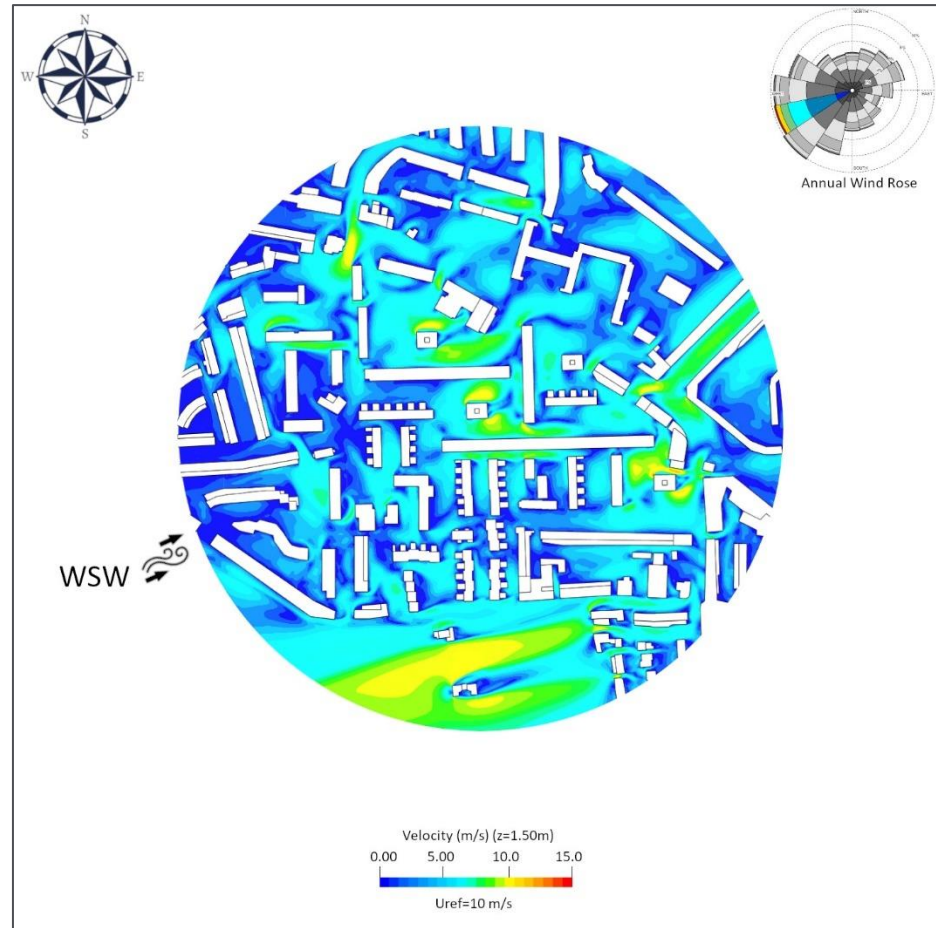
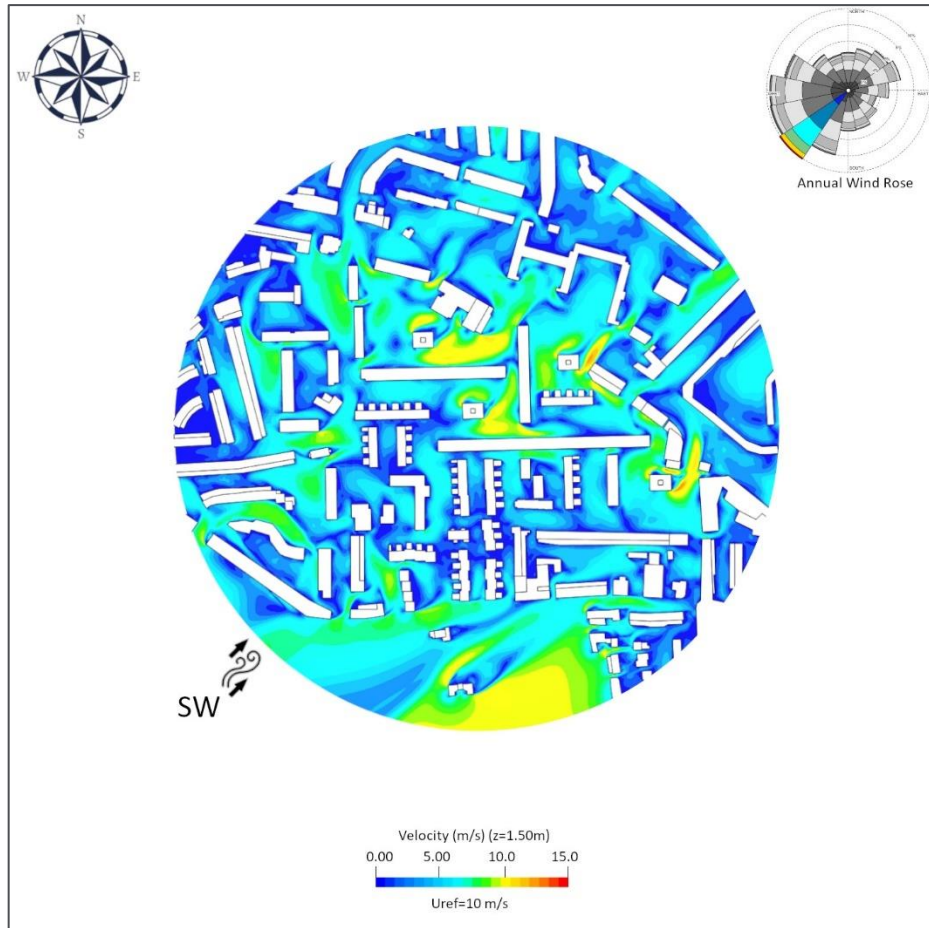


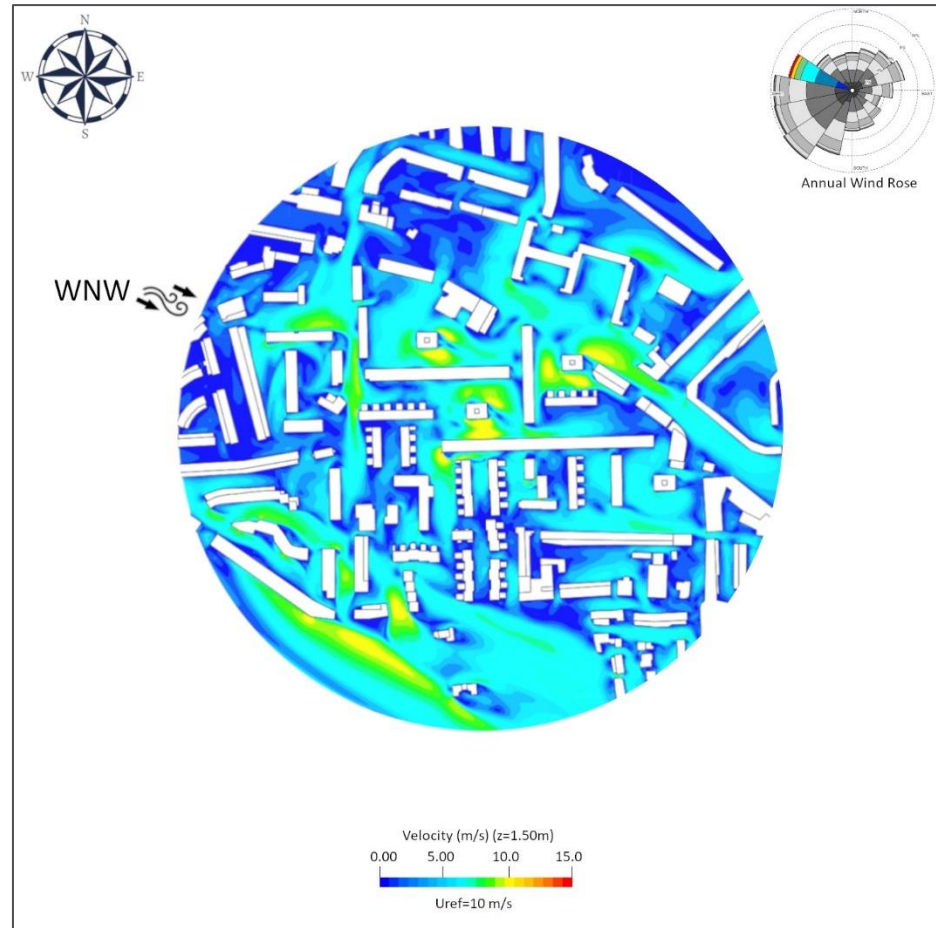
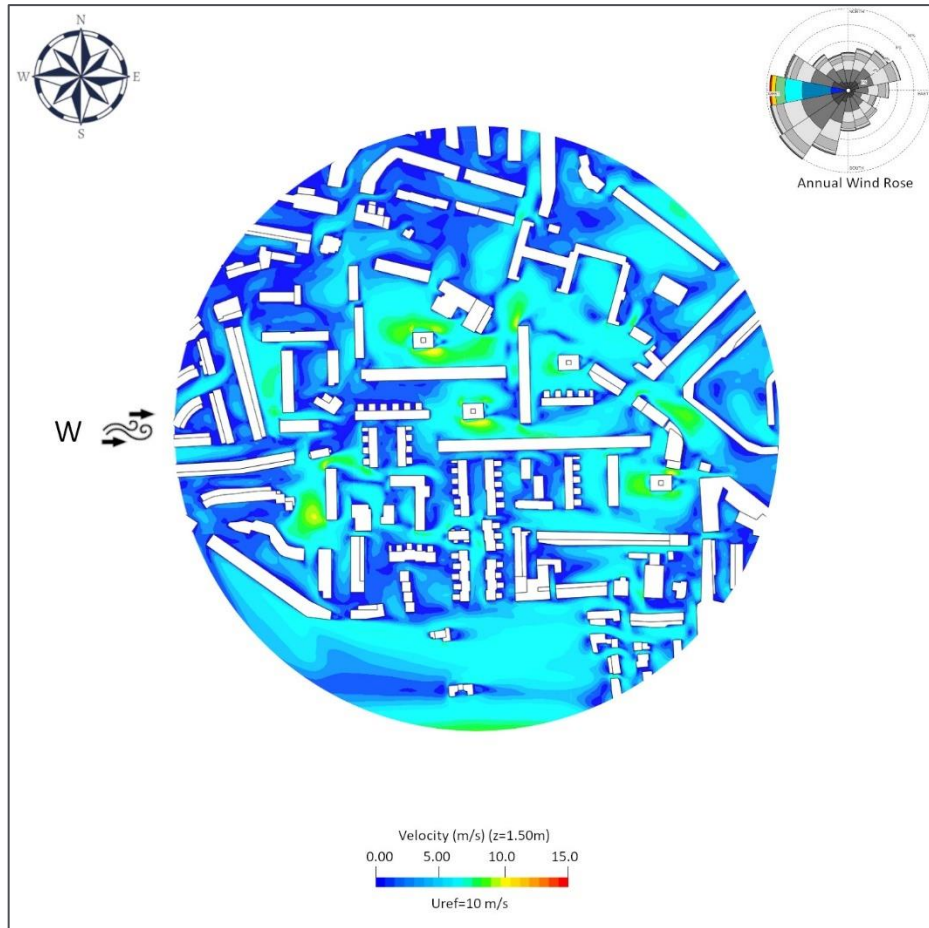


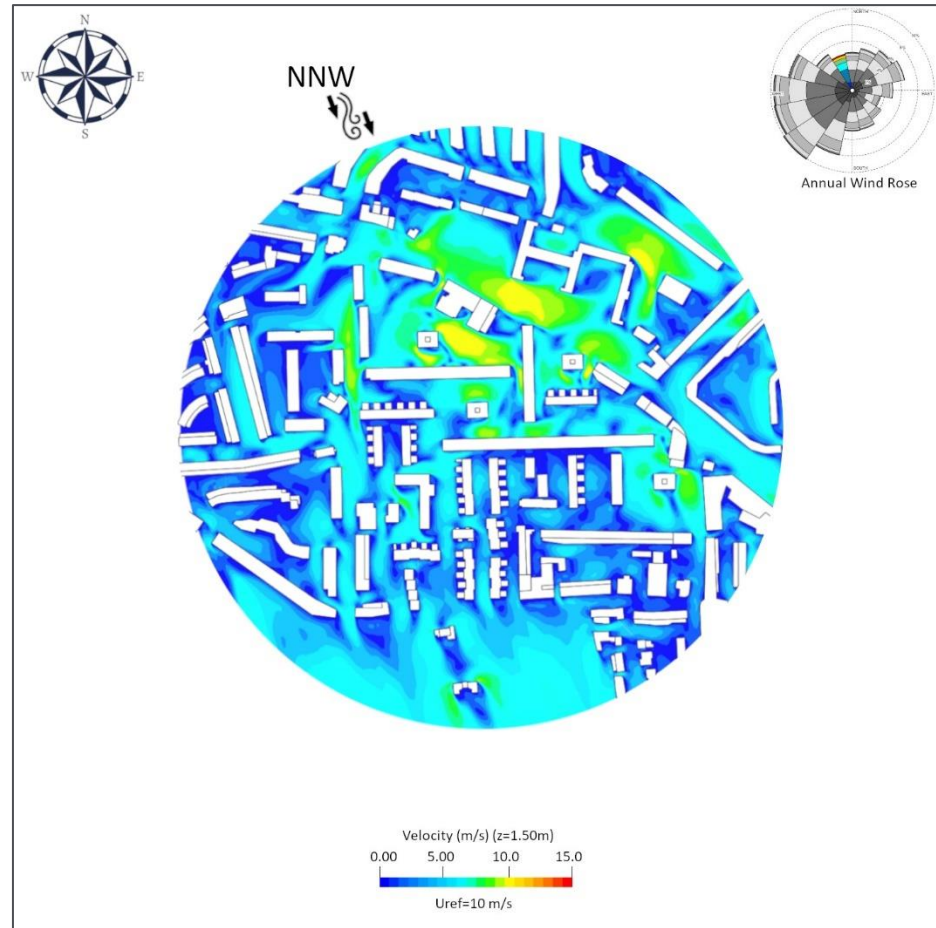
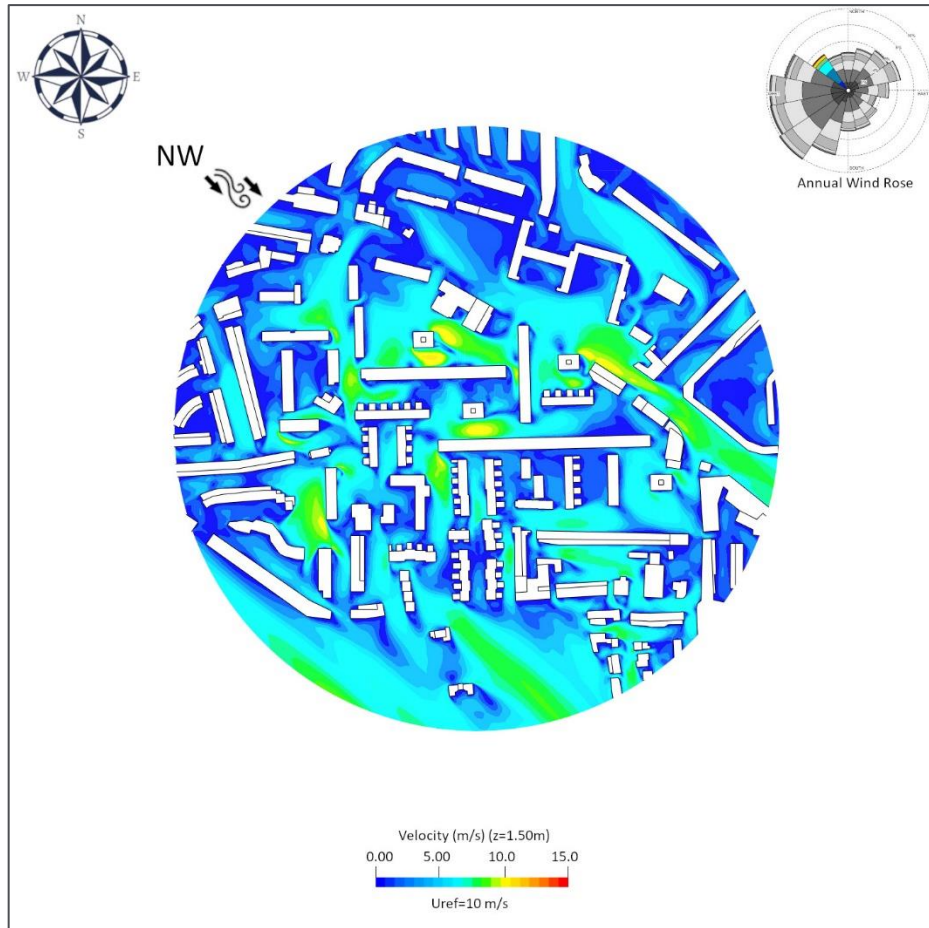




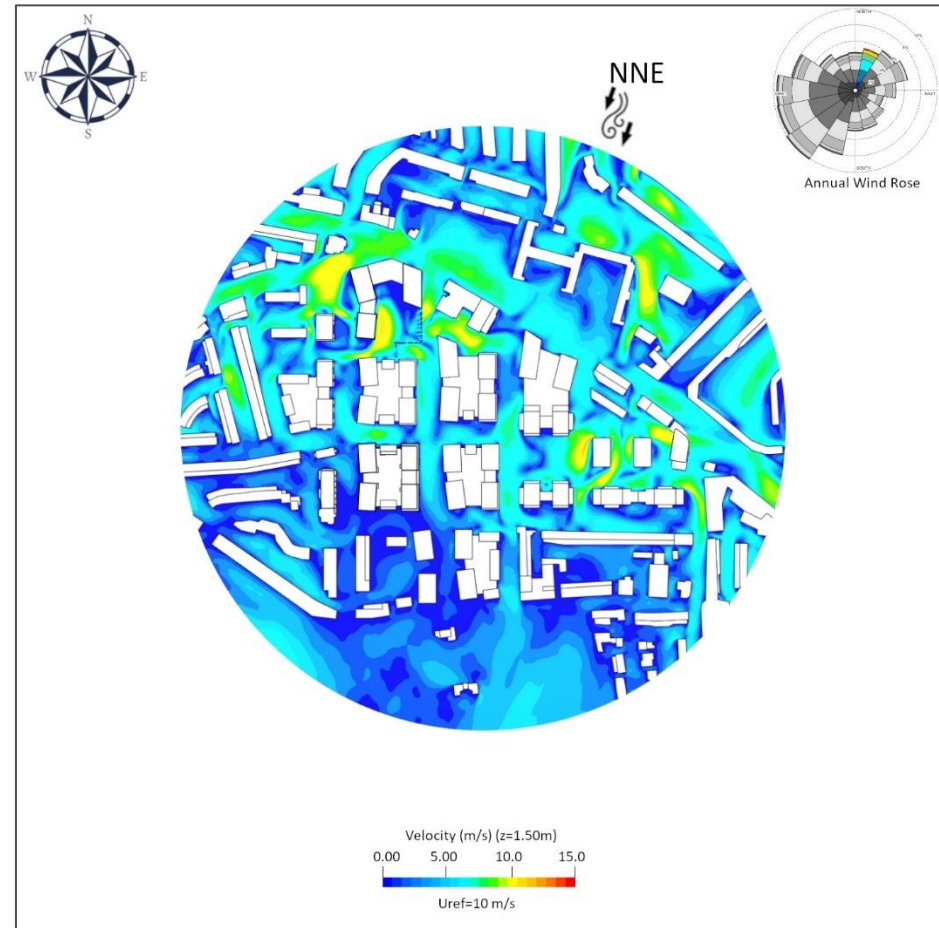
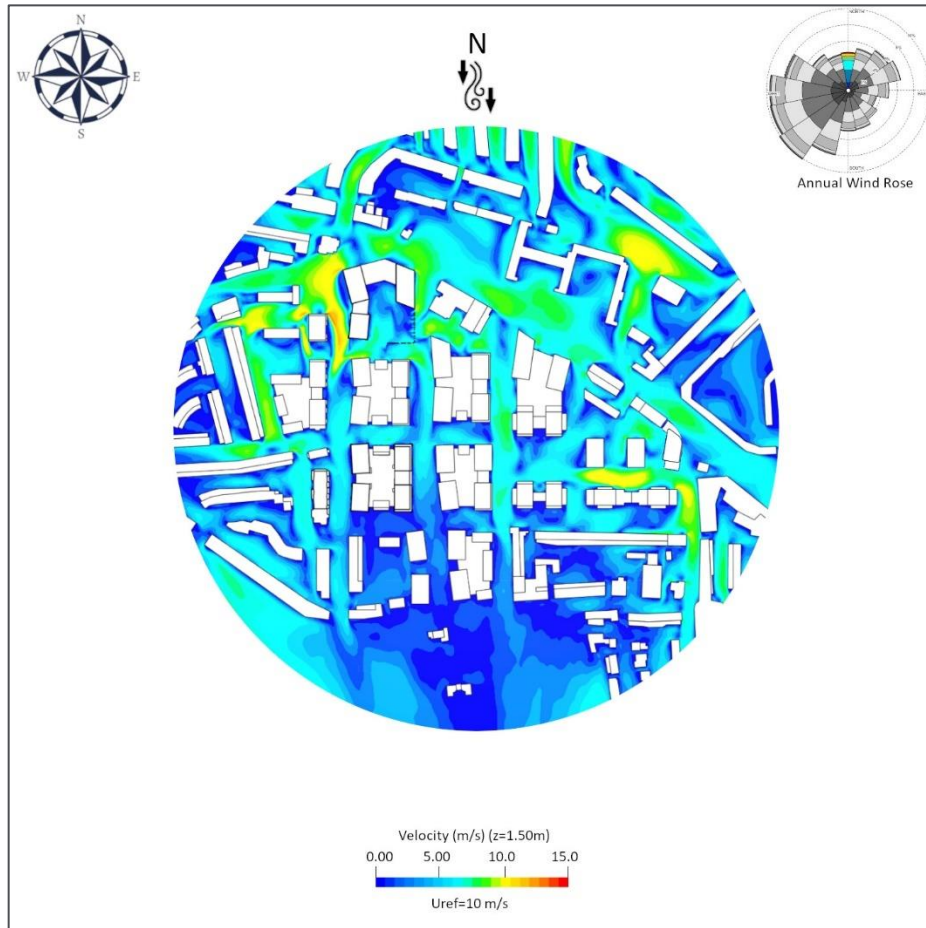


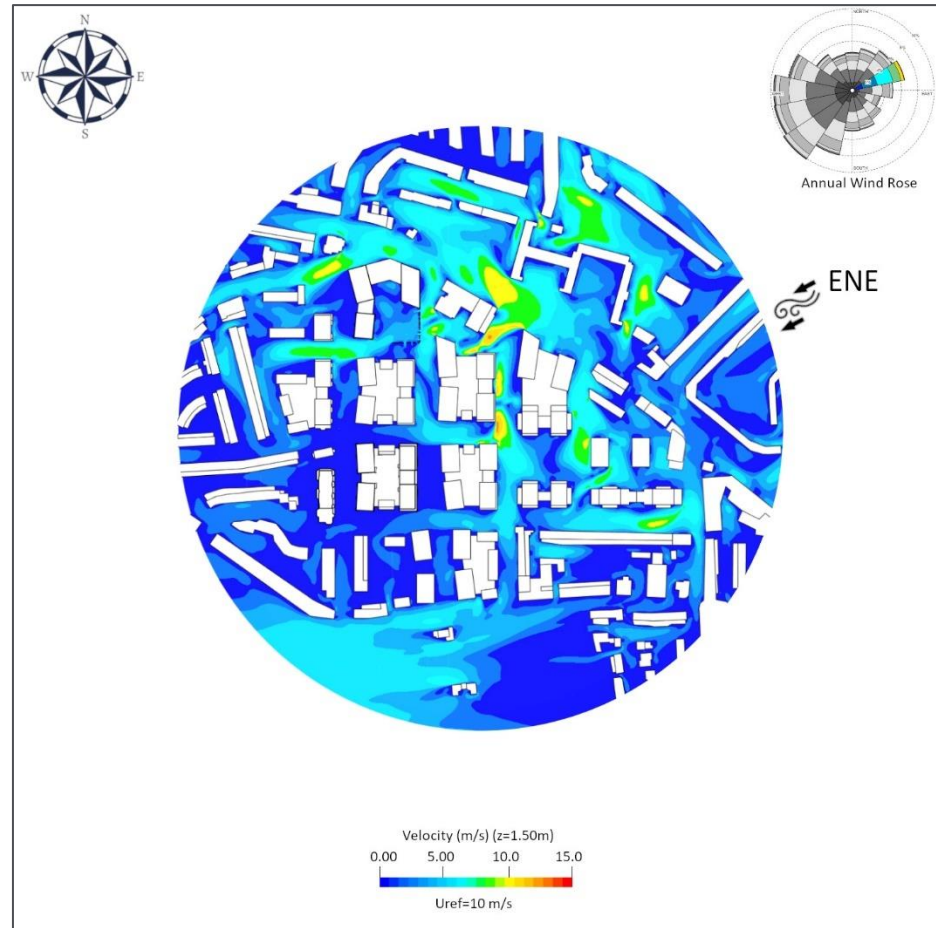
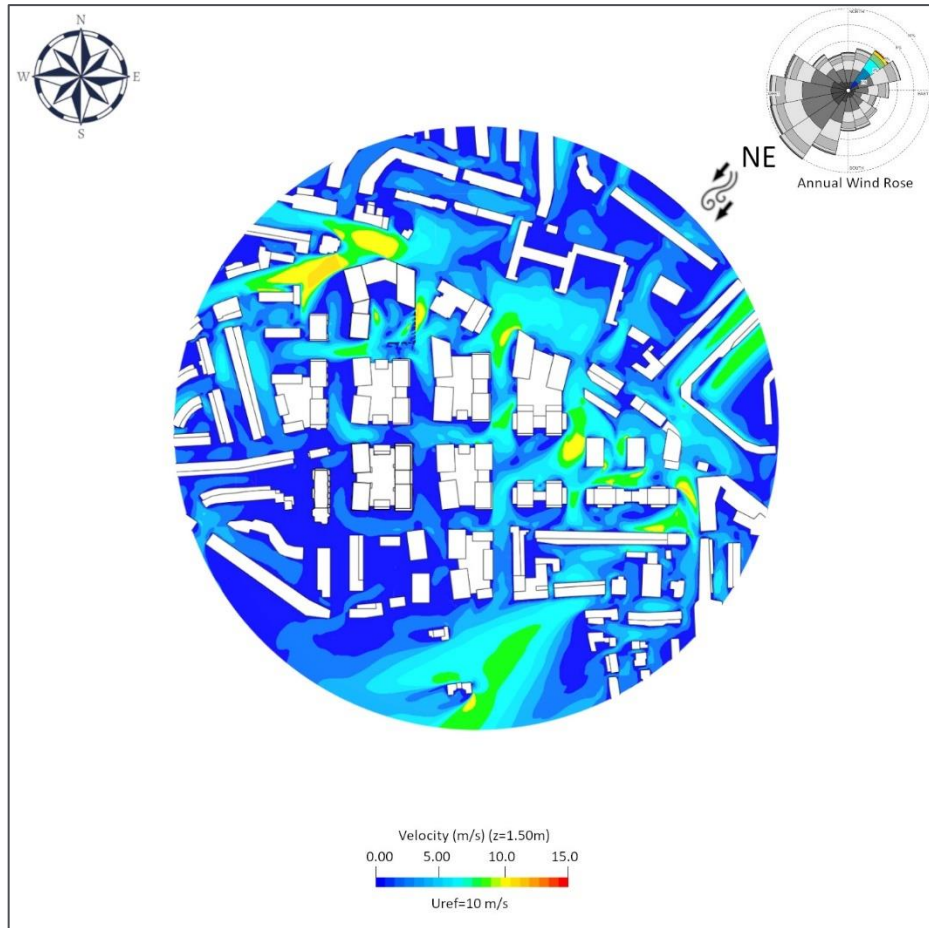


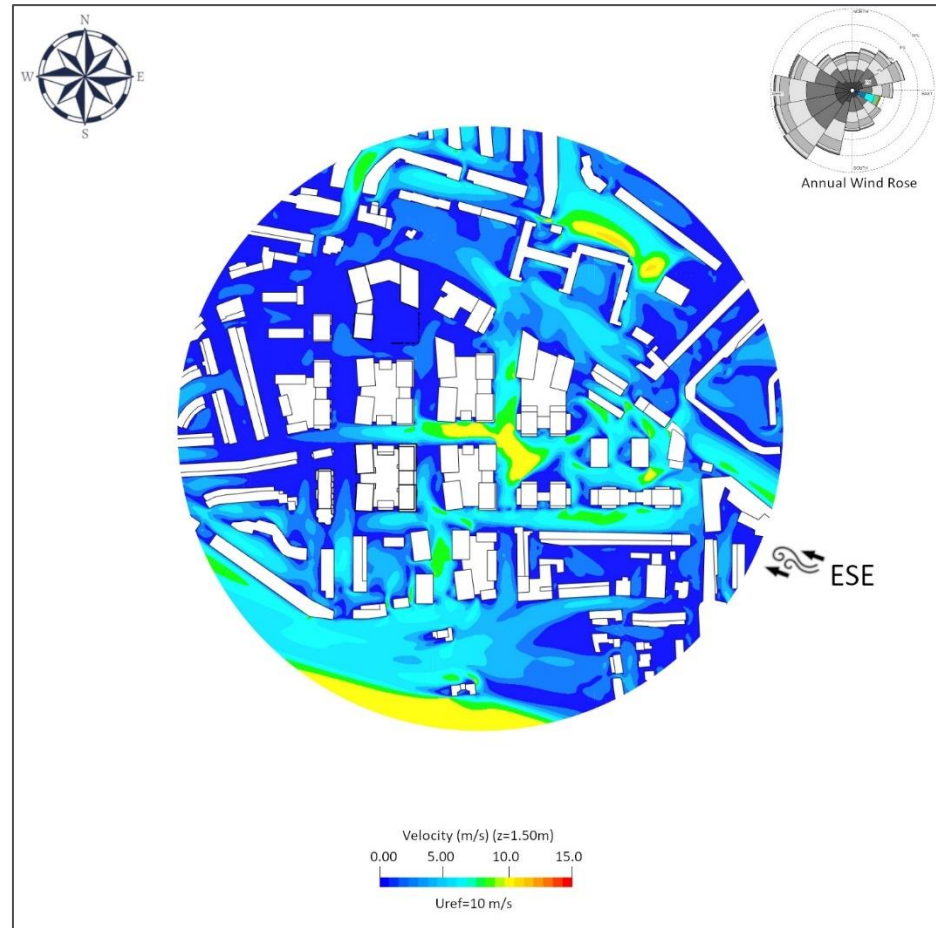
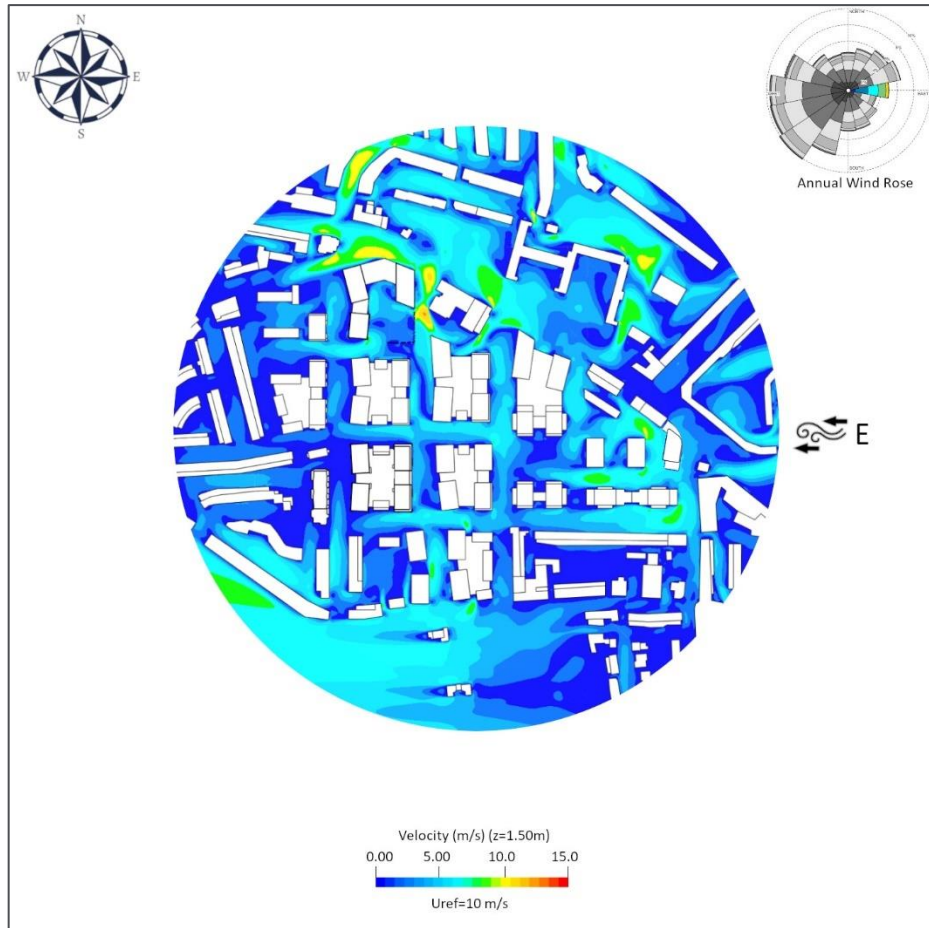


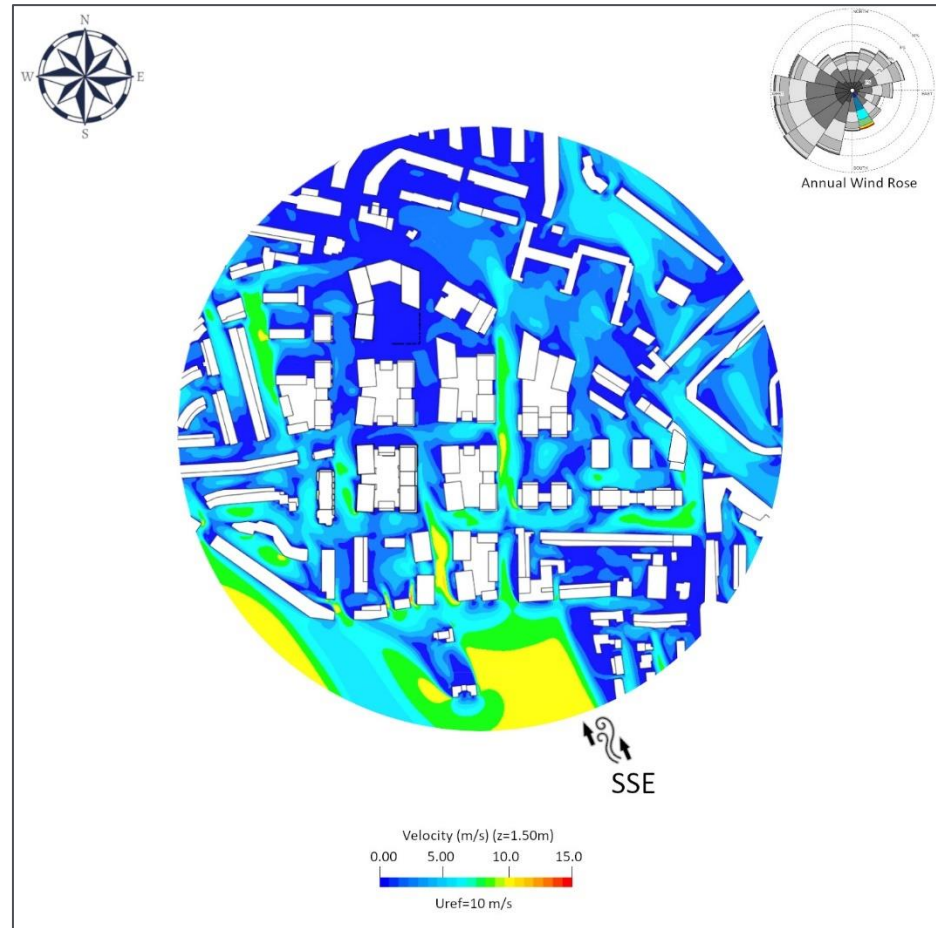
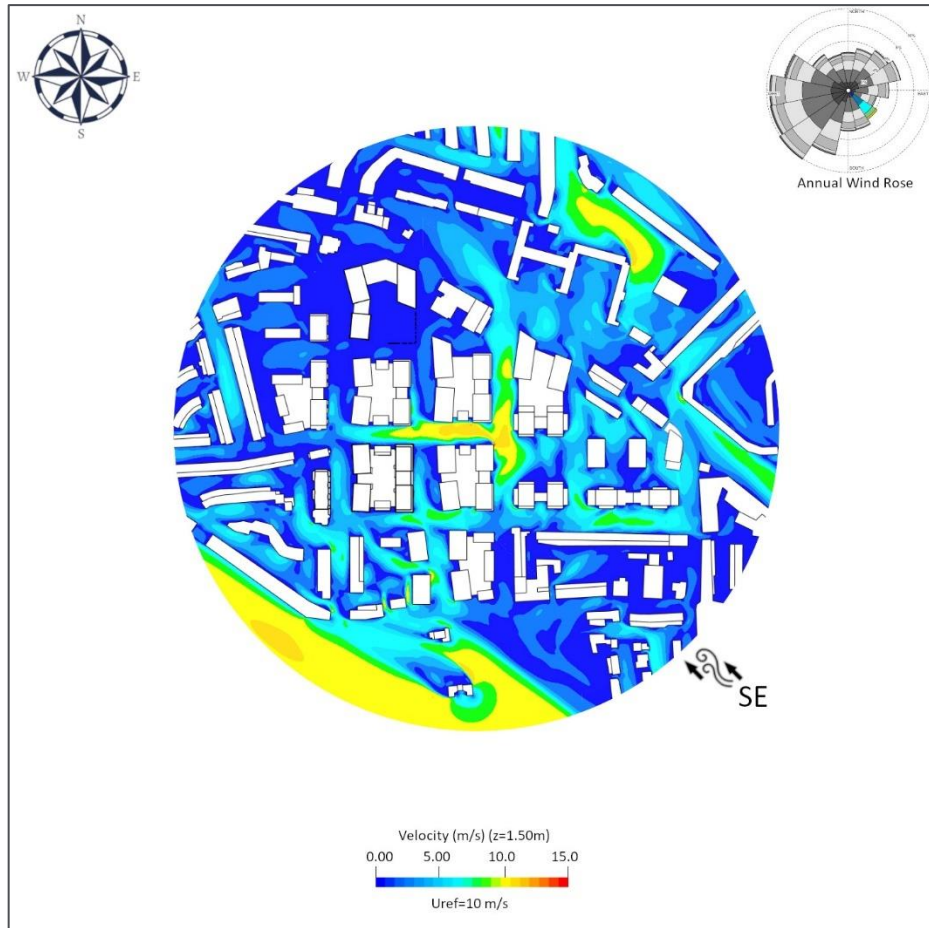


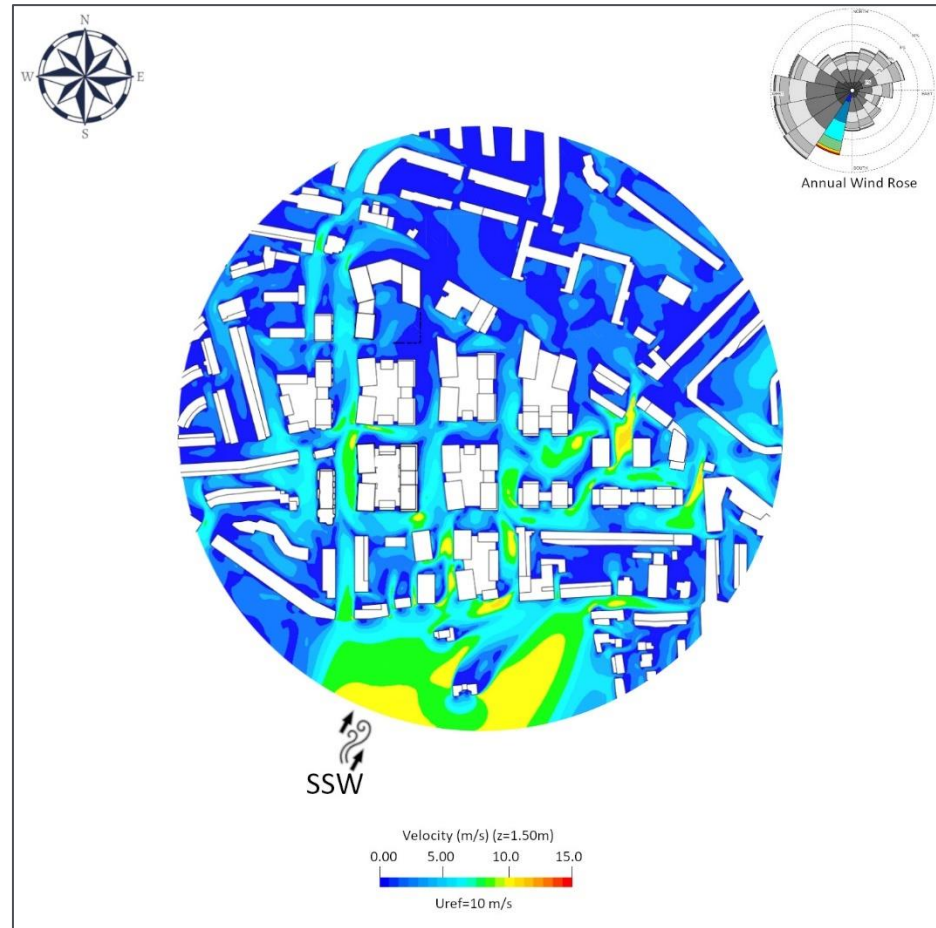
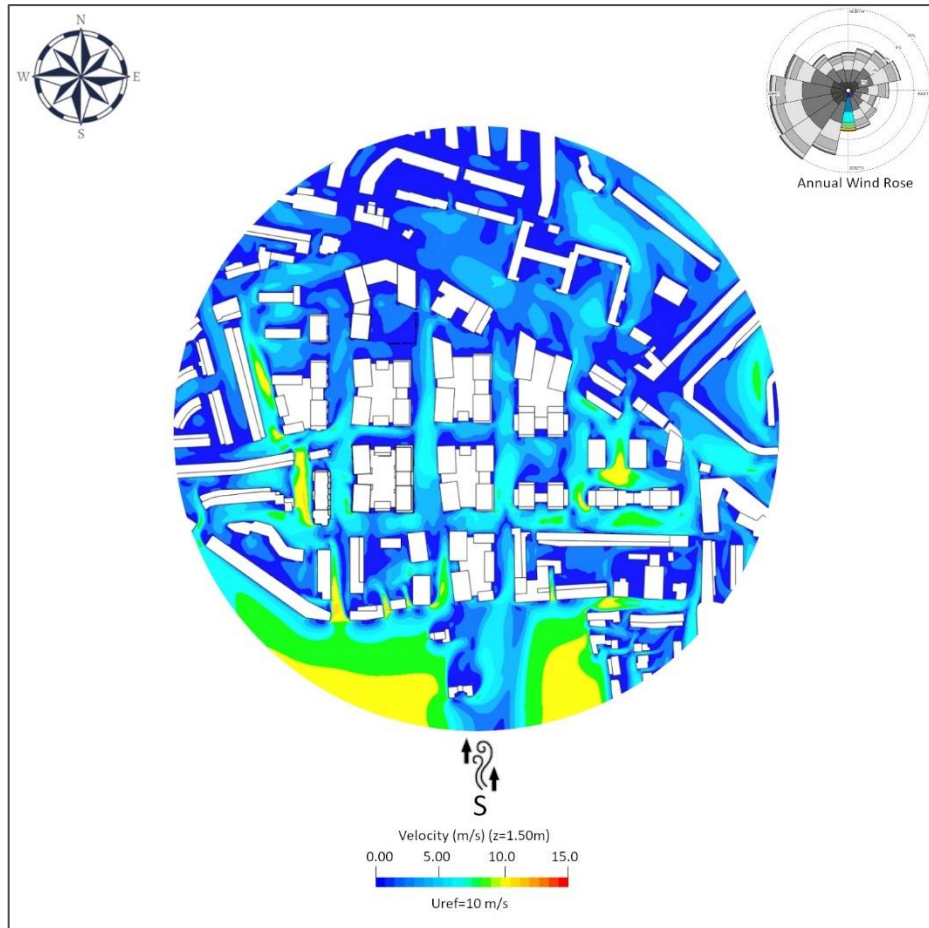
Appendix M – Scenario 2, Proposed Development - Average Wind Speeds (U_{mean})

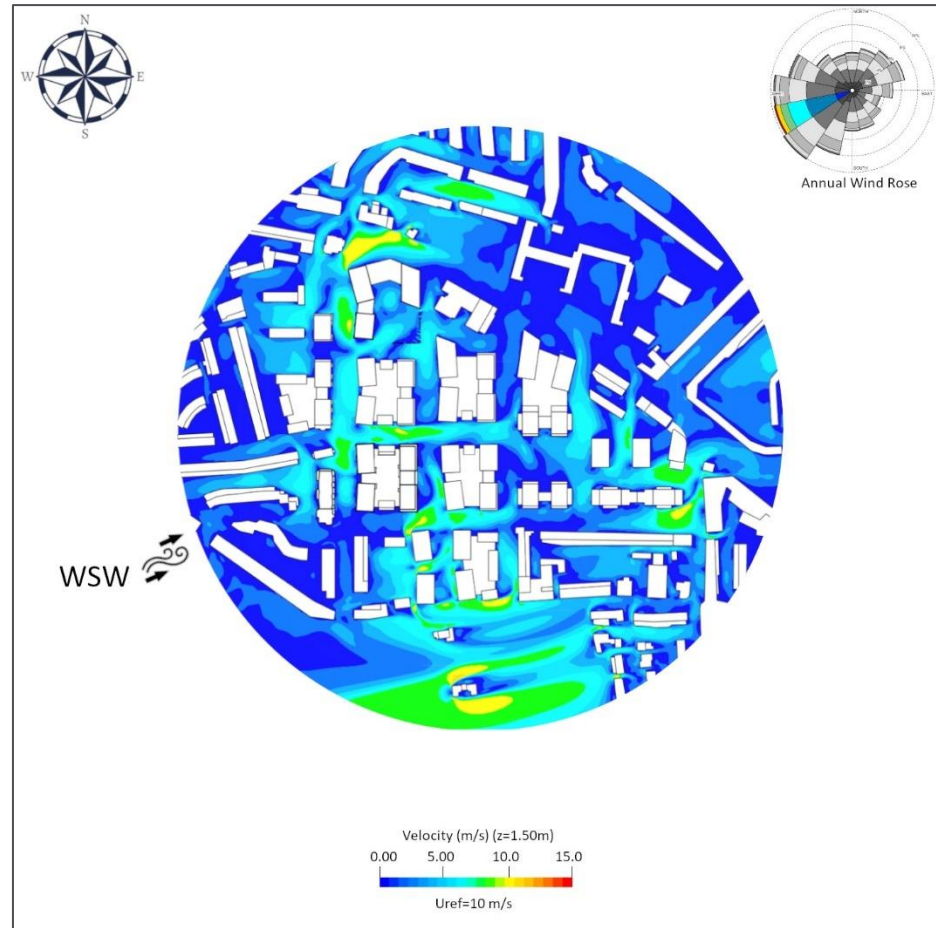
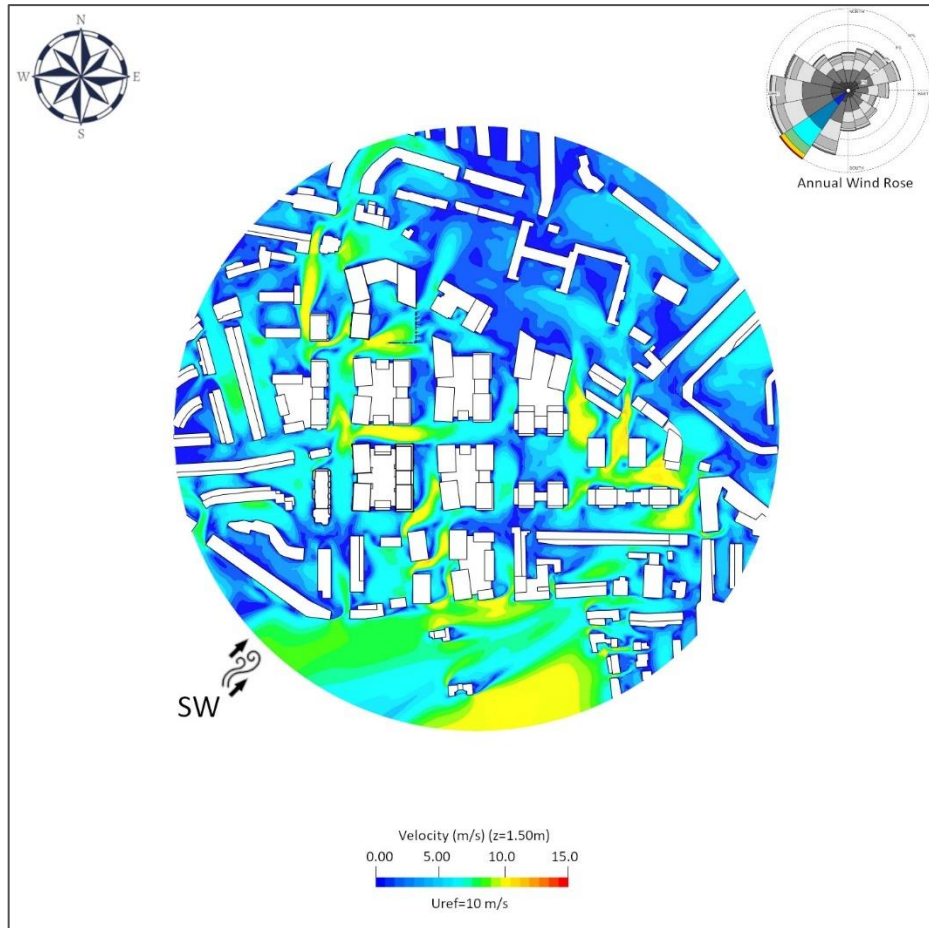


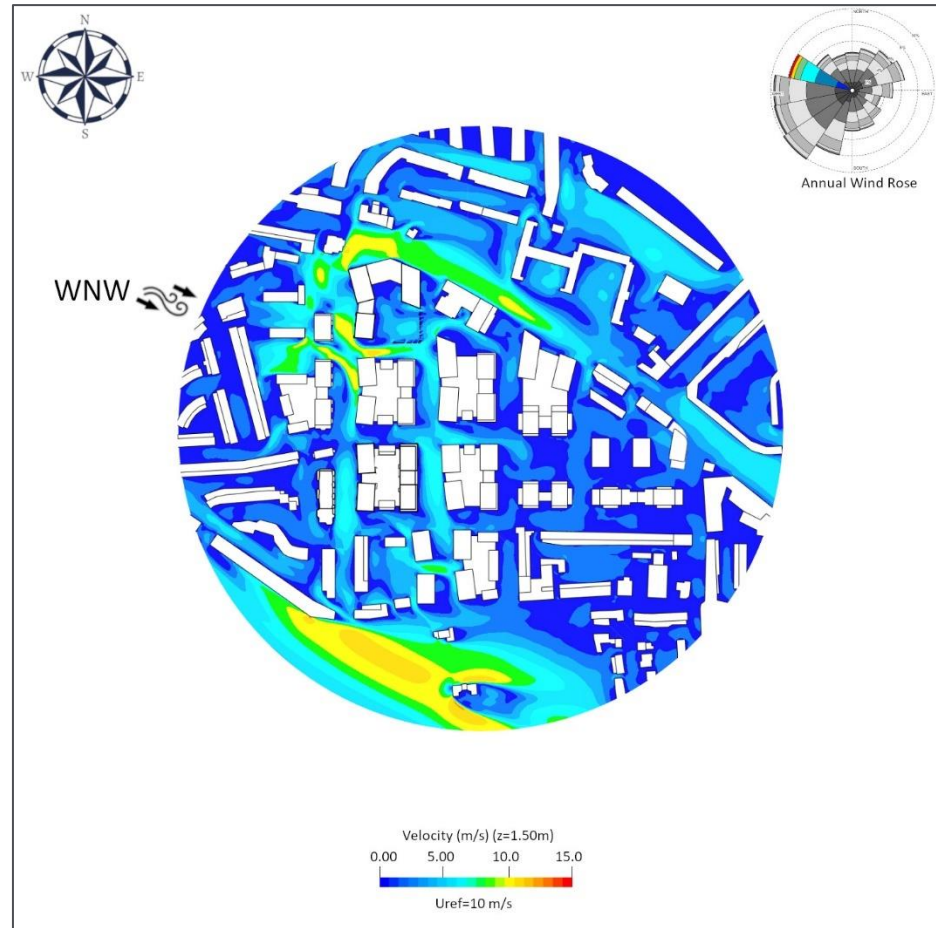
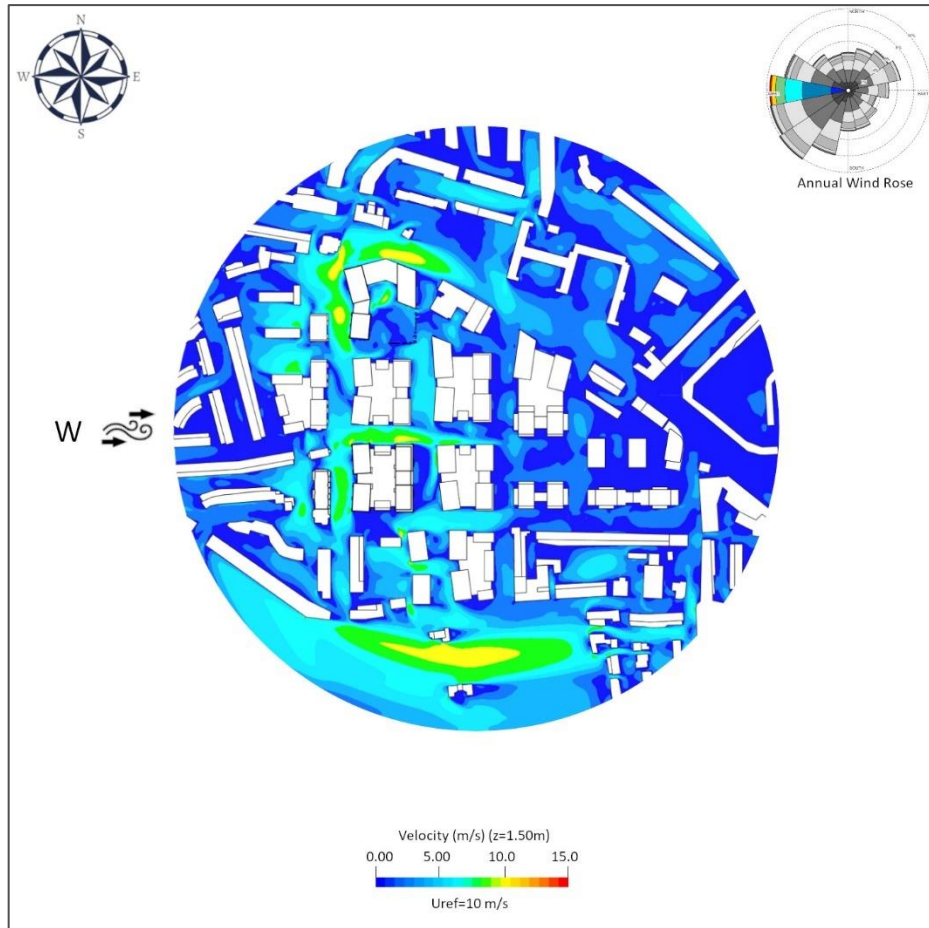


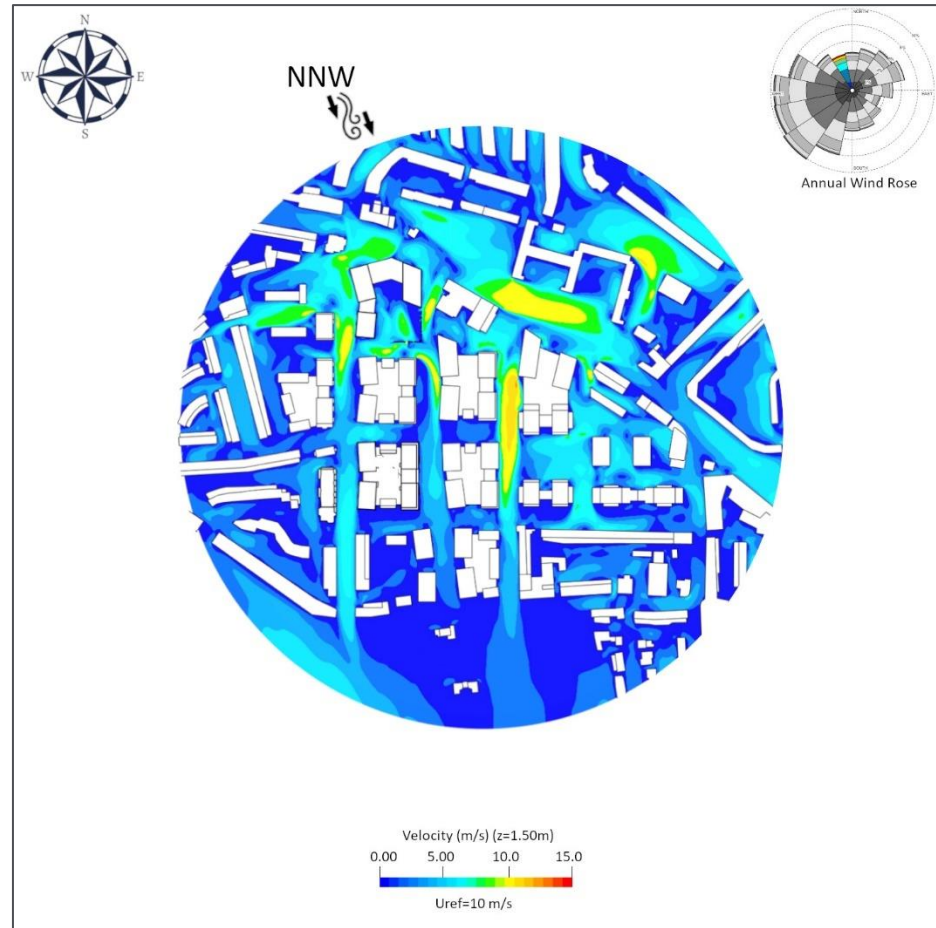
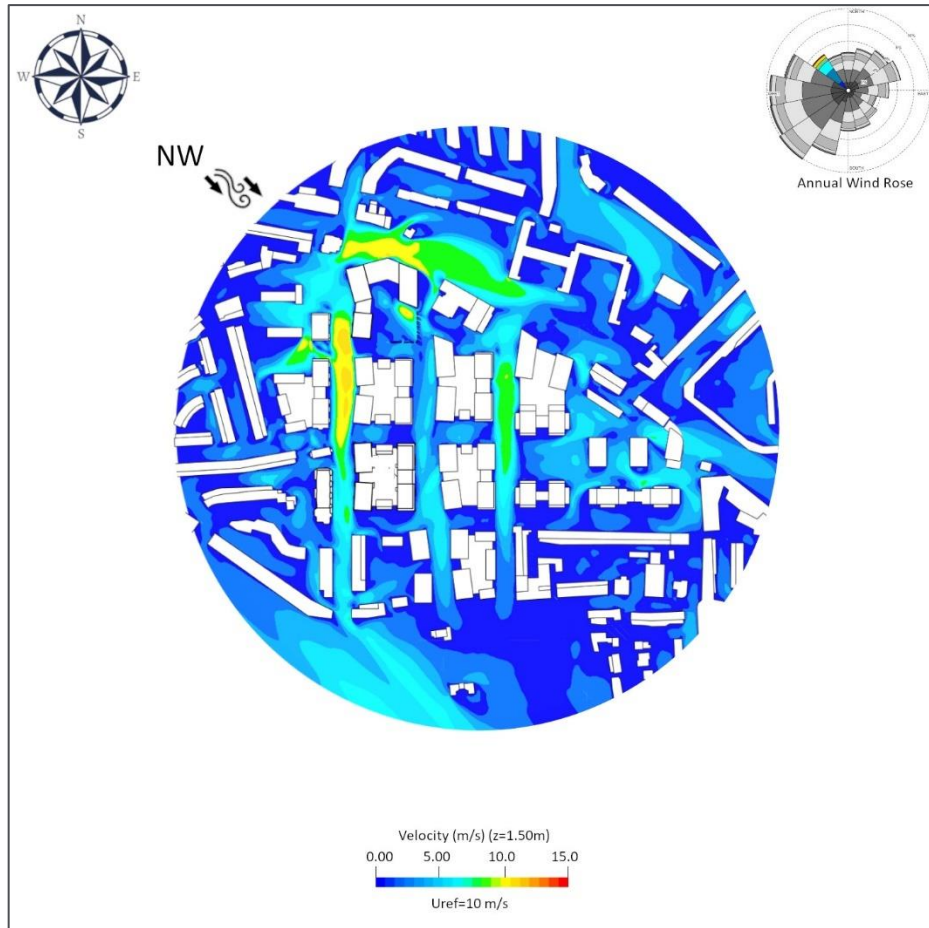




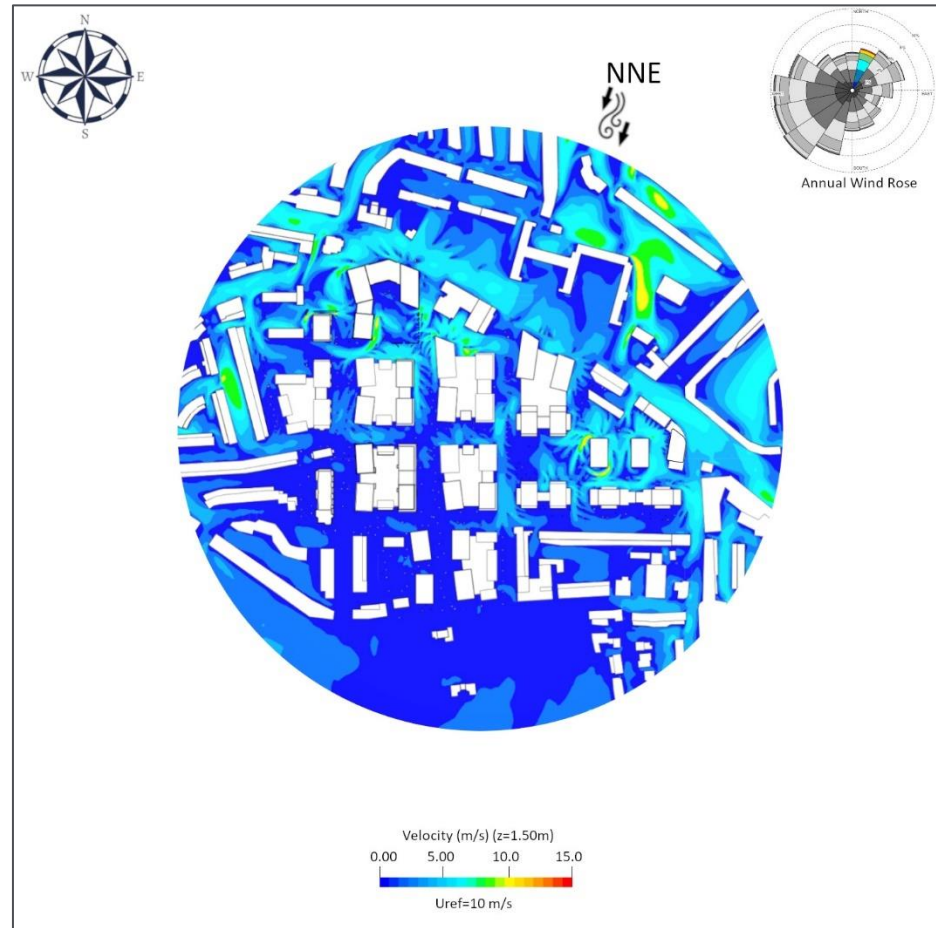
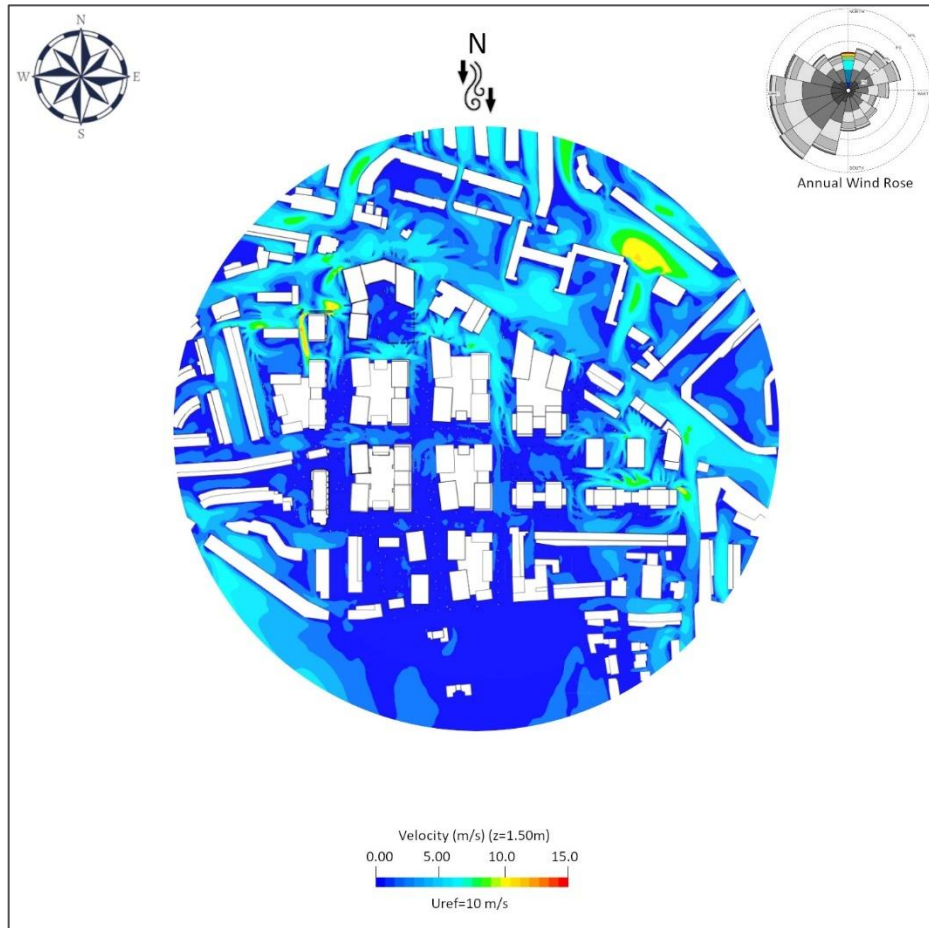


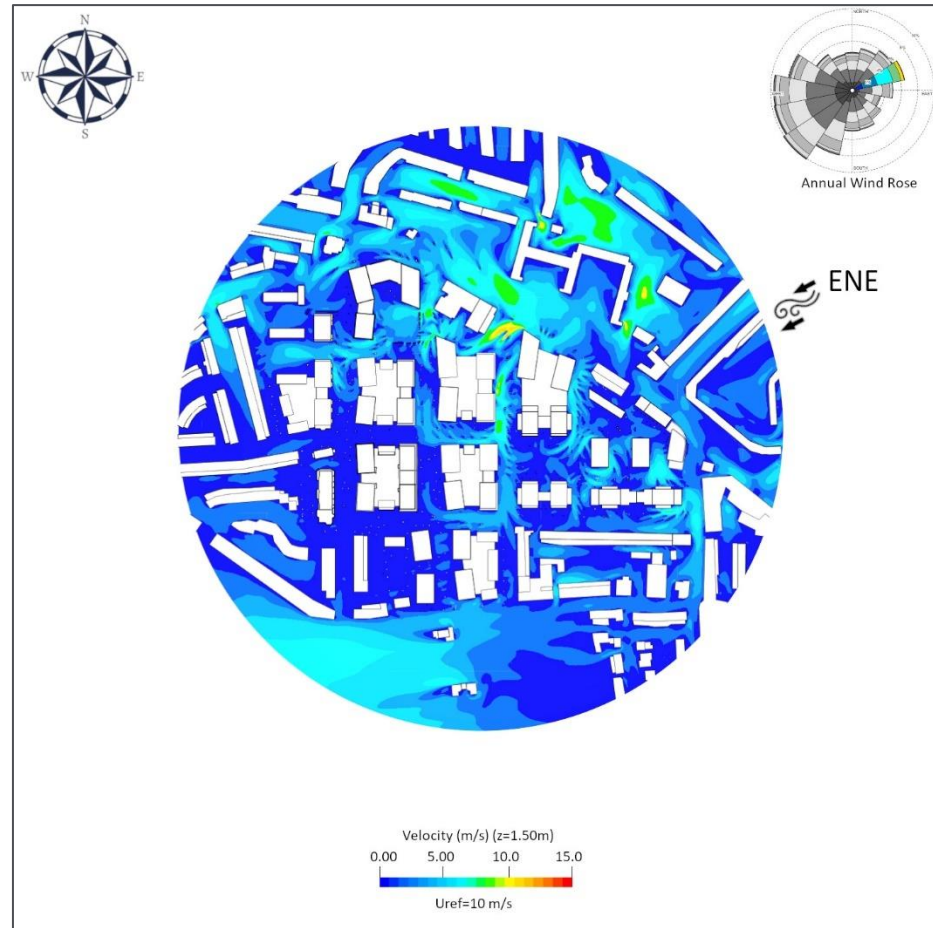
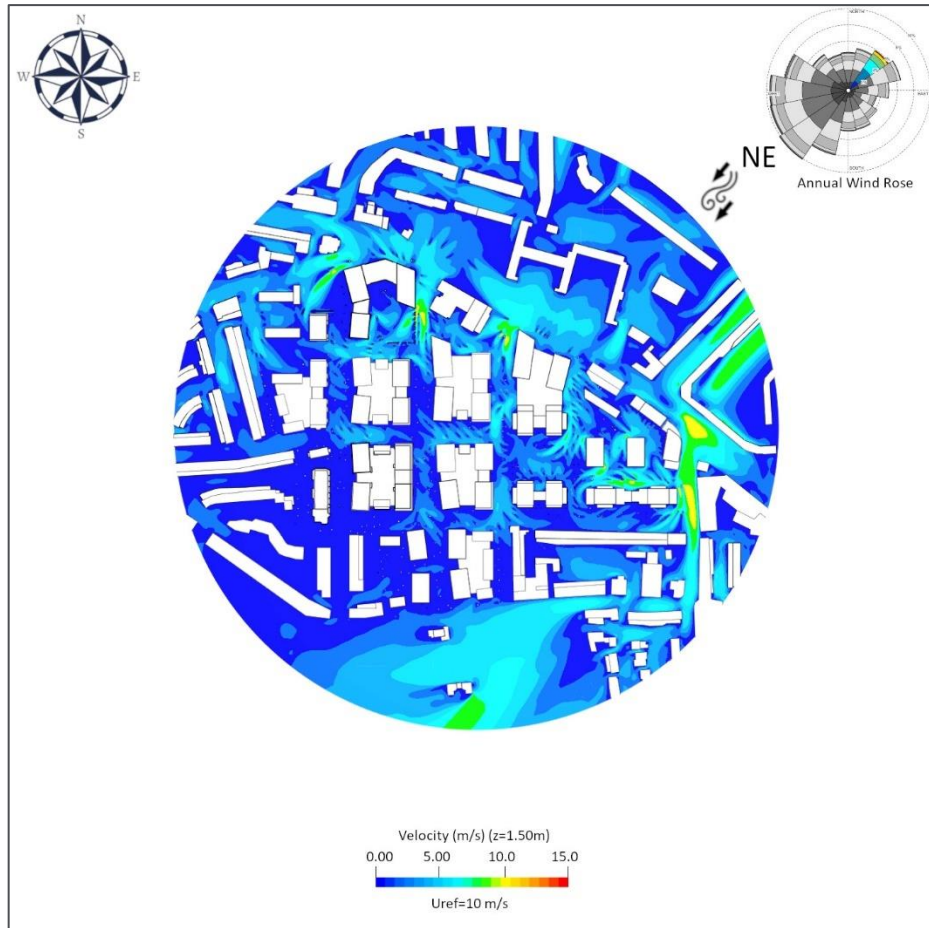


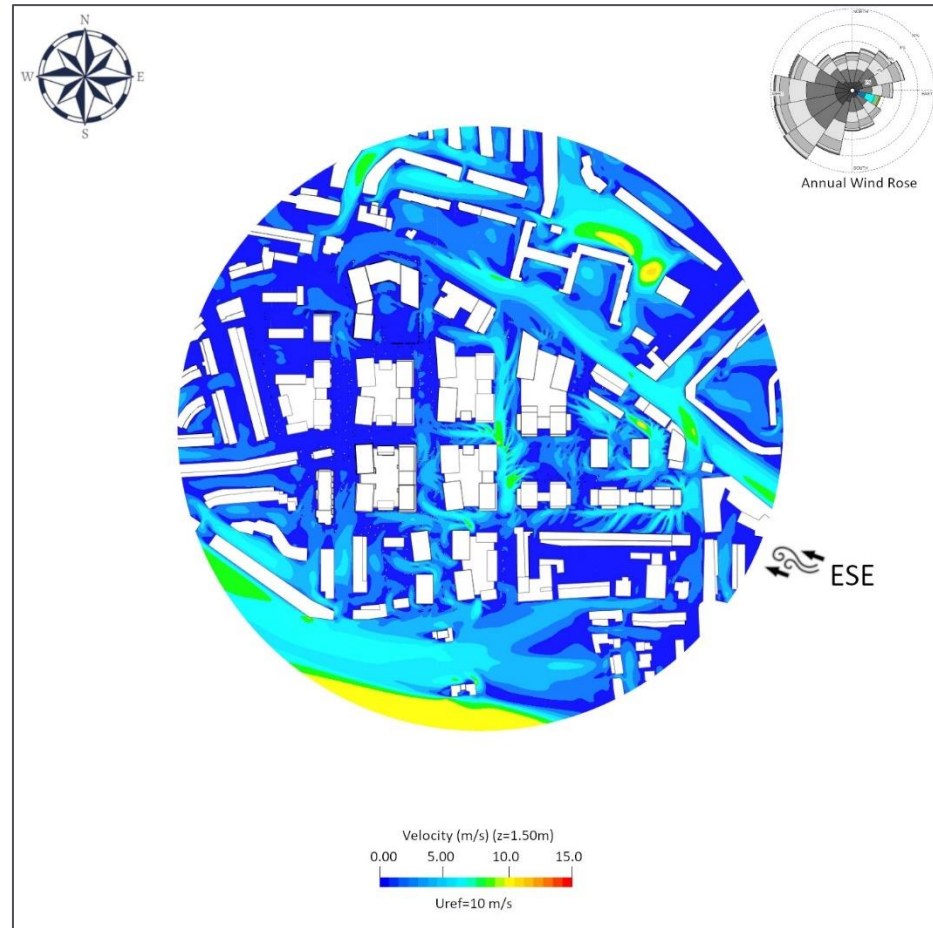
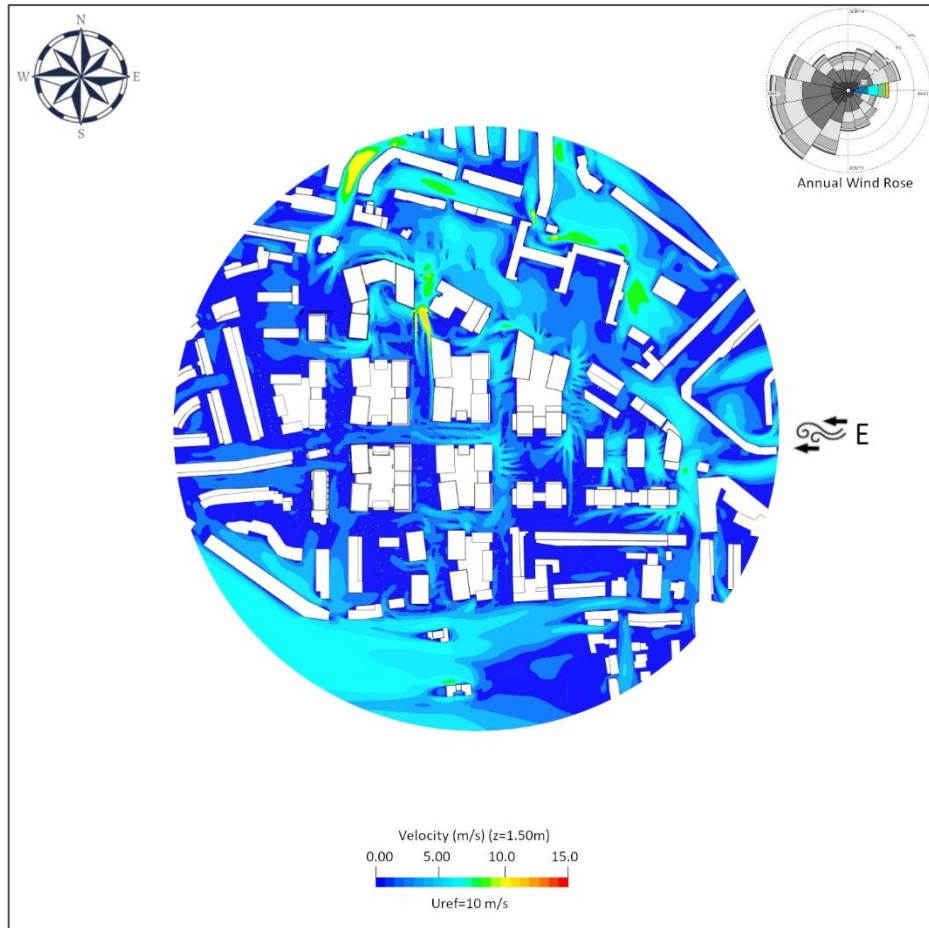


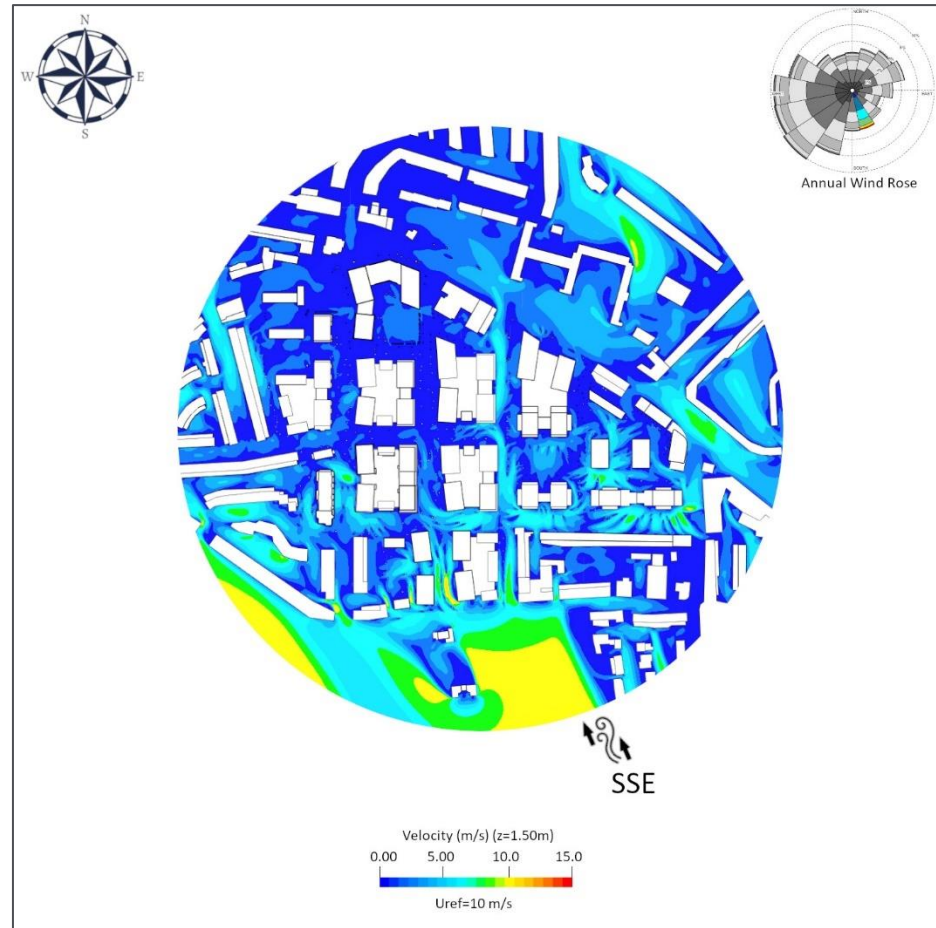
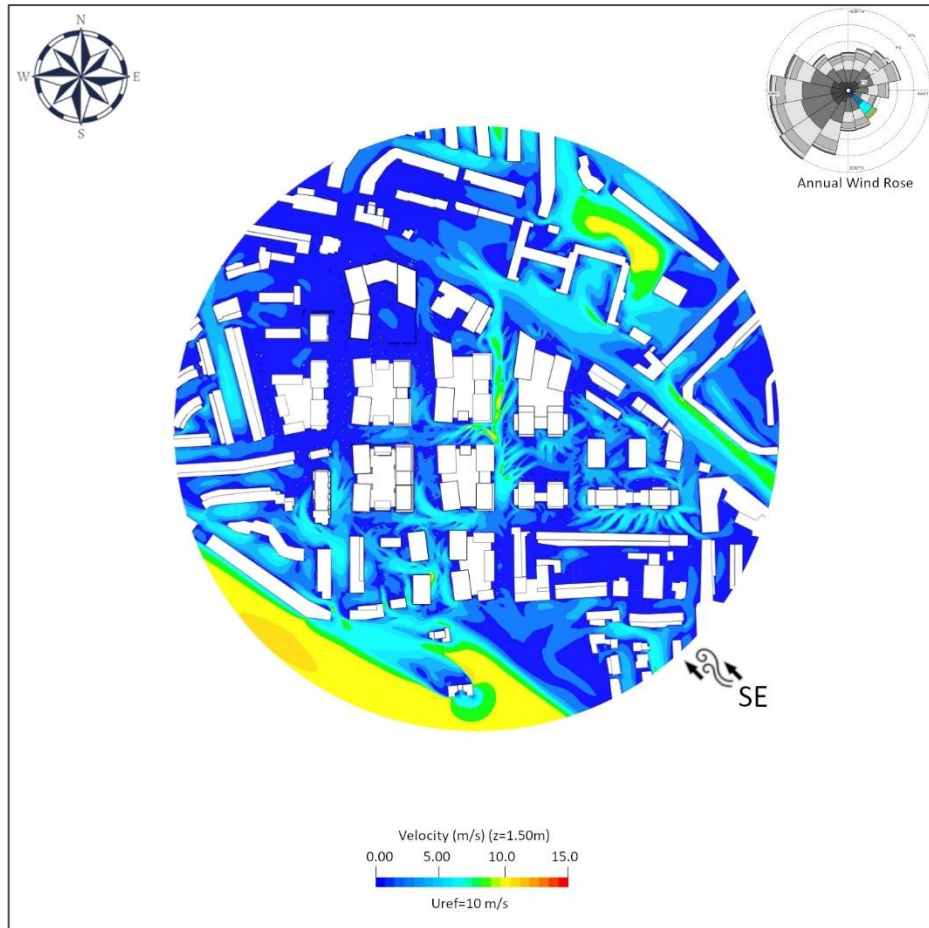


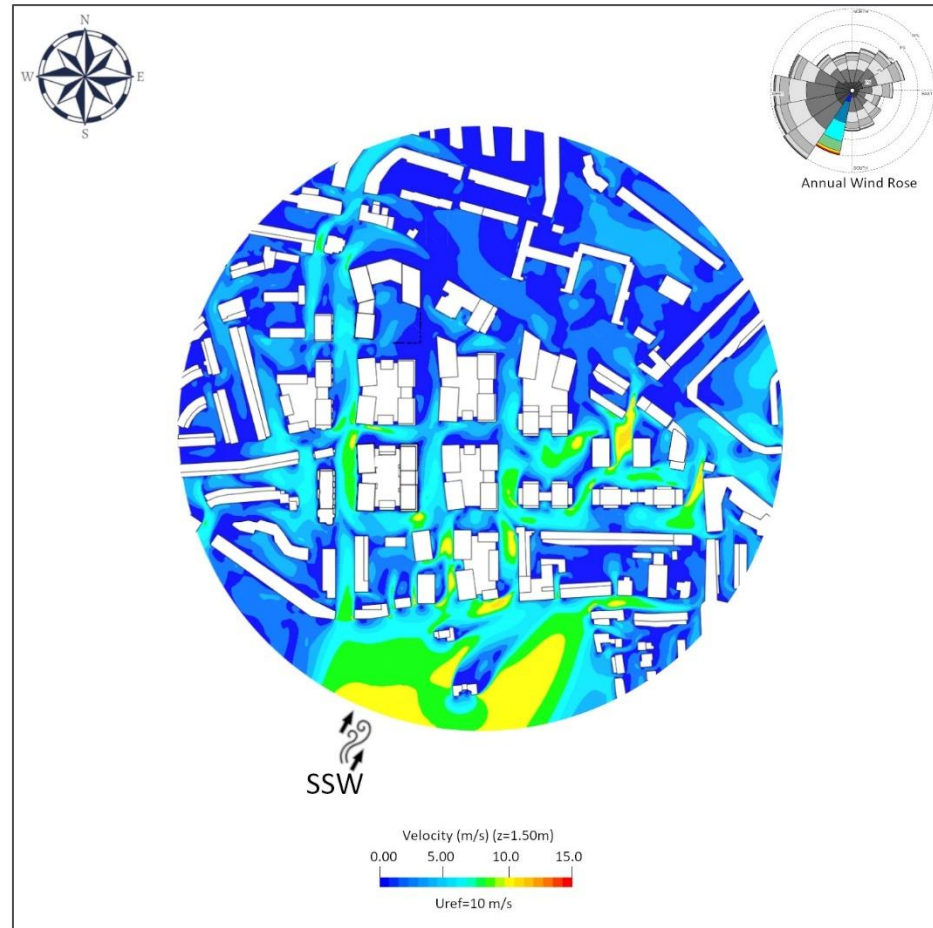
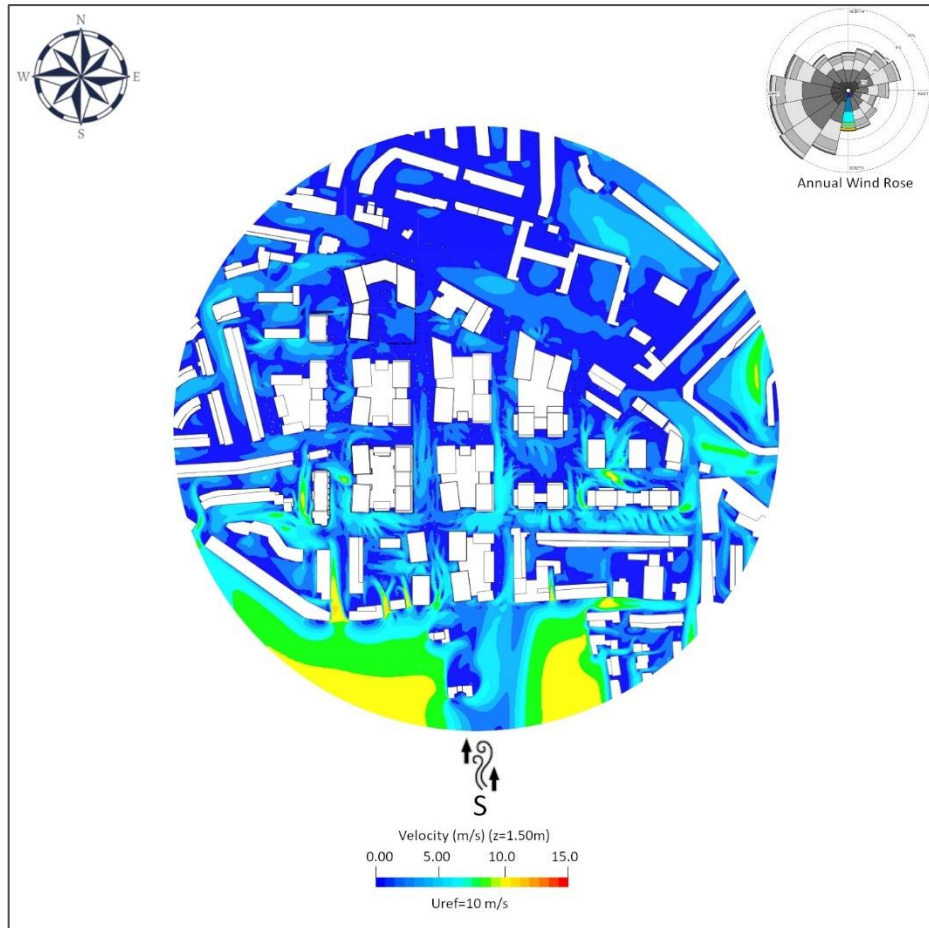
Appendix N – Scenario 3, Proposed Development with Mitigation - Average Wind Speeds (U_{mean})

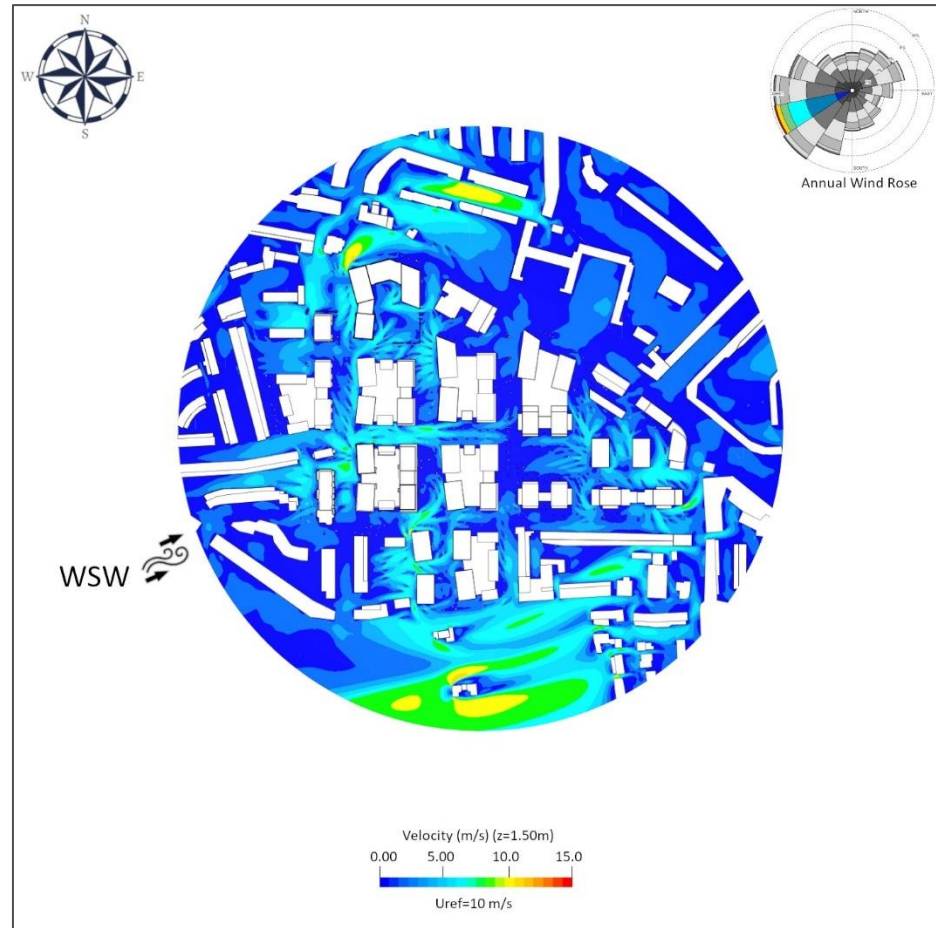
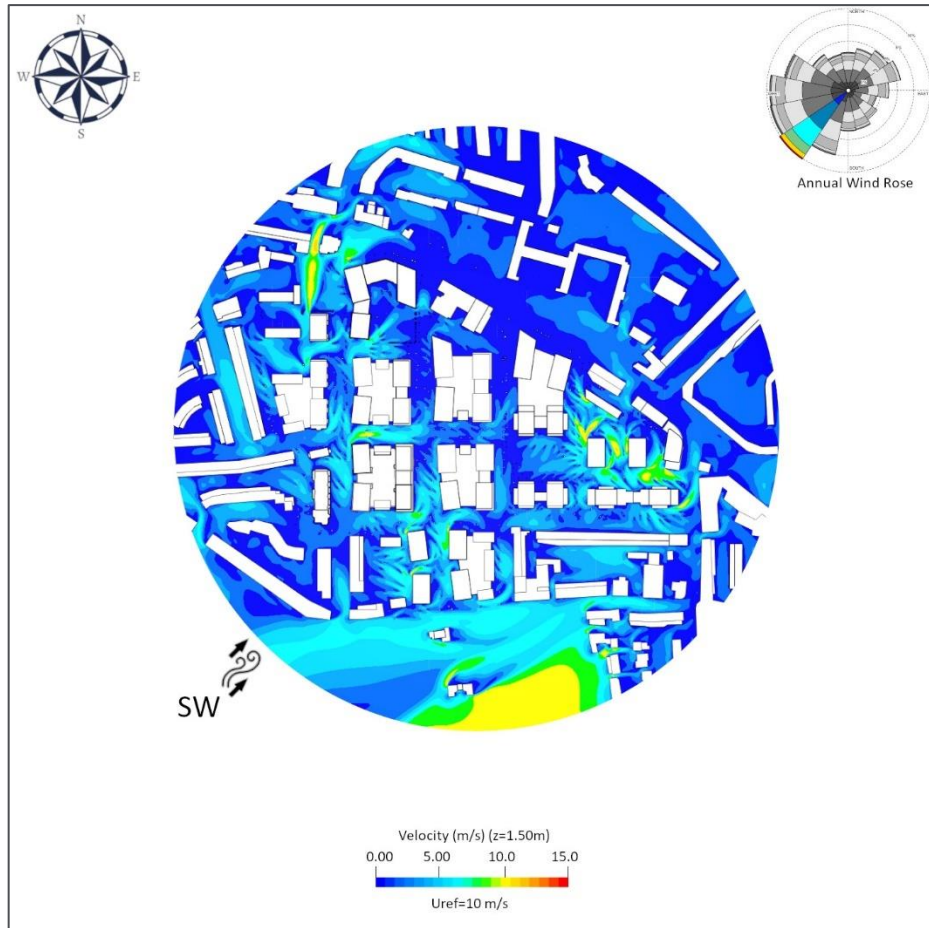


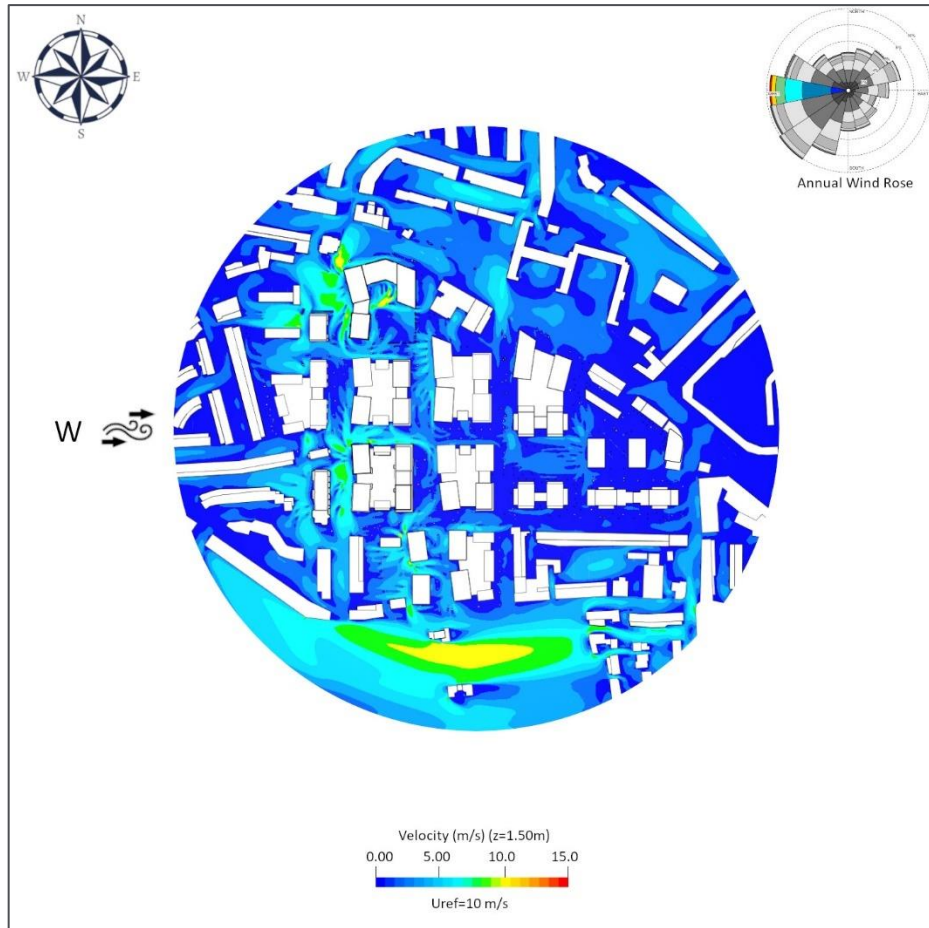


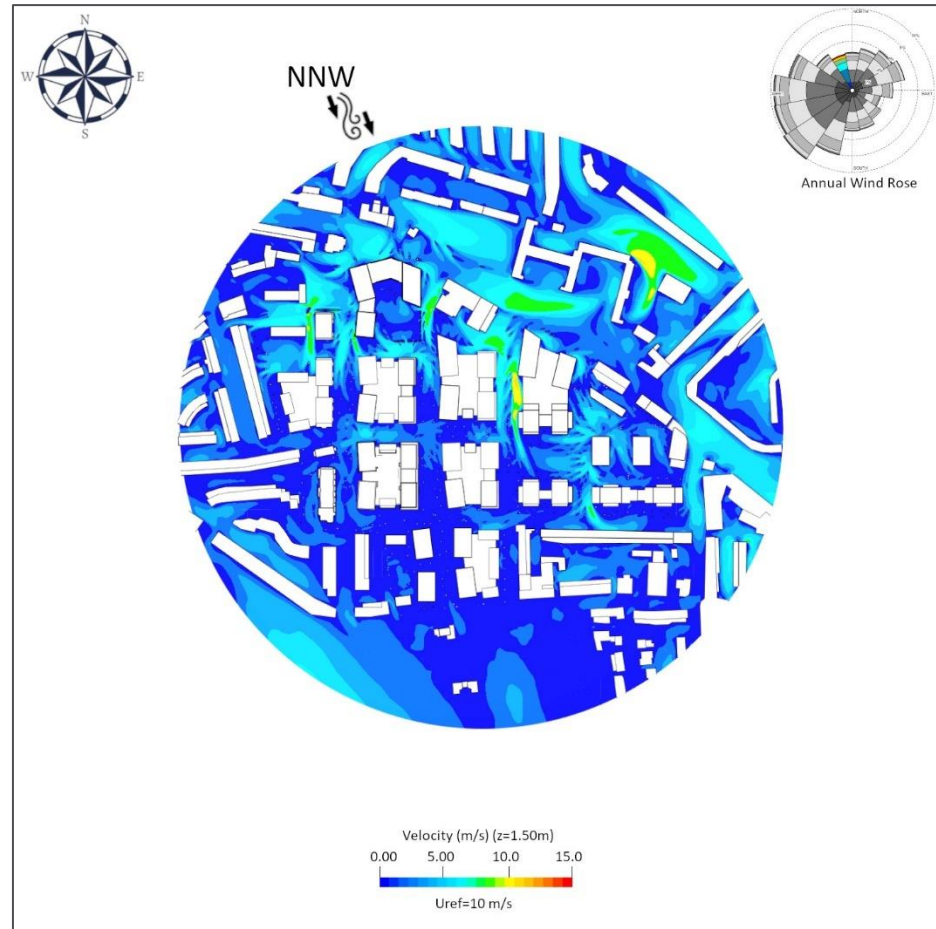
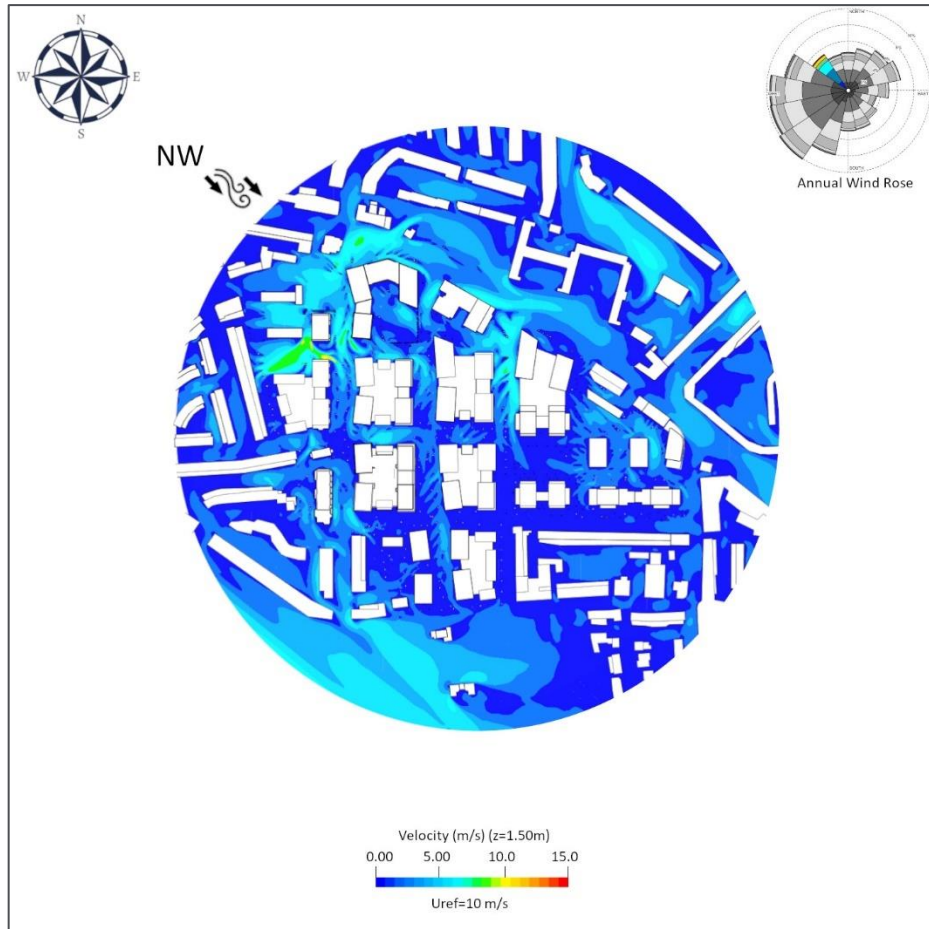














SRE Main Office | Greenforde Farm
Stoner Hill Road | Froxfield
Petersfield | Hampshire | GU32 1DY
T: +44 (0)1730 710044
E: info@sre.co.uk

SRE London Office | Parkshot House
5 Kew Road | Richmond
Surrey | TW9 2PR

T: +44 (0)20 8332 6633
W: www.sre.co.uk