

View 21

3.1 Ordinance survey co-ordinates			
Point Ref	Eastings	Northings	AOD height
2101	518601.421	168782.660	14.393
2102	518603.648	168783.152	10.744
2103	518598.081	168777.023	11.366
2104	518607.414	168780.101	10.817
2105	518716.356	168830.545	11.233
2106	518714.758	168835.160	14.754
2107	518642.456	168796.945	14.320
2108	518605.971	168777.448	13.941
2109	518651.569	168767.098	12.137
2110	518652.817	168763.021	15.507
2111	518663.806	168755.853	11.781
2112	518651.307	168773.237	12.064
2113	518645.519	168779.484	18.684
2114	518591.855	168772.290	10.697
2115	518595.147	168771.707	10.802
2116	518600.045	168774.539	9.281
2117	518624.000	168785.971	10.537

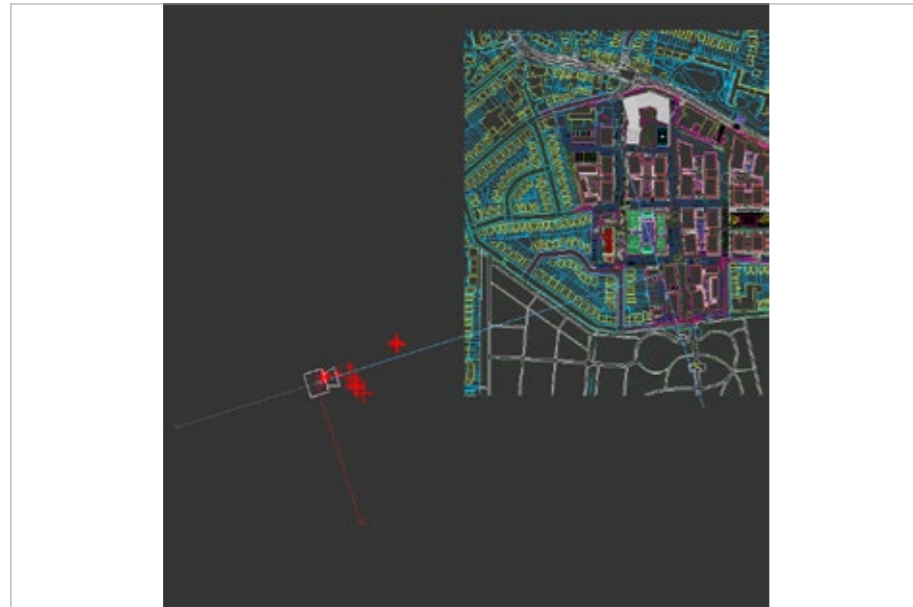


3.2 OS survey points marked on base photograph



3.3 View 21 camera location

Eastings 518590.931m
 Northings 168771.256m
 AOD height 9.126m
 Approx distance to centre of site 660m
 Approx bearing from North 72°



3.4 Screen grab of camera location in 3DS Max software



3.5 Screen grab of calculated horizon line



3.6 Screen grab of camera matching to survey data



3.7 Screen grab of model matched to photograph



3.8 Final camera matched photomontage

View 22

3.1 Ordnance survey co-ordinates			
Point Ref	Eastings	Northings	AOD height
2201	518821.052	168116.795	31.395
2202	518821.009	168128.426	34.702
2203	518826.963	168150.319	28.671
2204	518827.945	168105.076	27.832
2205	518832.632	168138.006	29.885
2206	518843.205	168180.070	29.714
2207	518849.606	168171.938	30.995
2208	518853.417	168162.609	31.297
2209	518851.568	168159.500	25.632
2210	518849.335	168145.749	29.151
2211	518830.420	168088.487	27.301
2212	518836.649	168096.454	32.957
2213	518843.983	168104.971	31.383
2214	518847.830	168107.103	35.688
2215	518837.626	168090.967	27.957
2216	518827.959	168089.937	27.312
2217	518844.217	168095.484	32.079

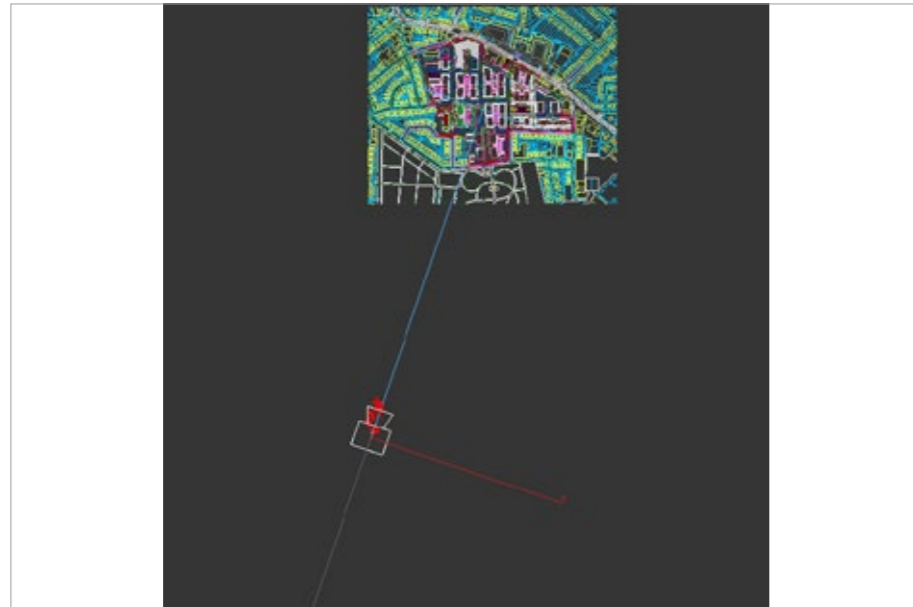


3.2 OS survey points marked on base photograph



3.3 View 22 camera location

Eastings 518827.162m
 Northings 168078.252m
 AOD height 27.642m
 Approx distance to centre of site 1054m
 Approx bearing from North 19°



3.4 Screen grab of camera location in 3DS Max software



3.5 Screen grab of calculated horizon line



3.6 Screen grab of camera matching to survey data



3.7 Screen grab of model matched to photograph

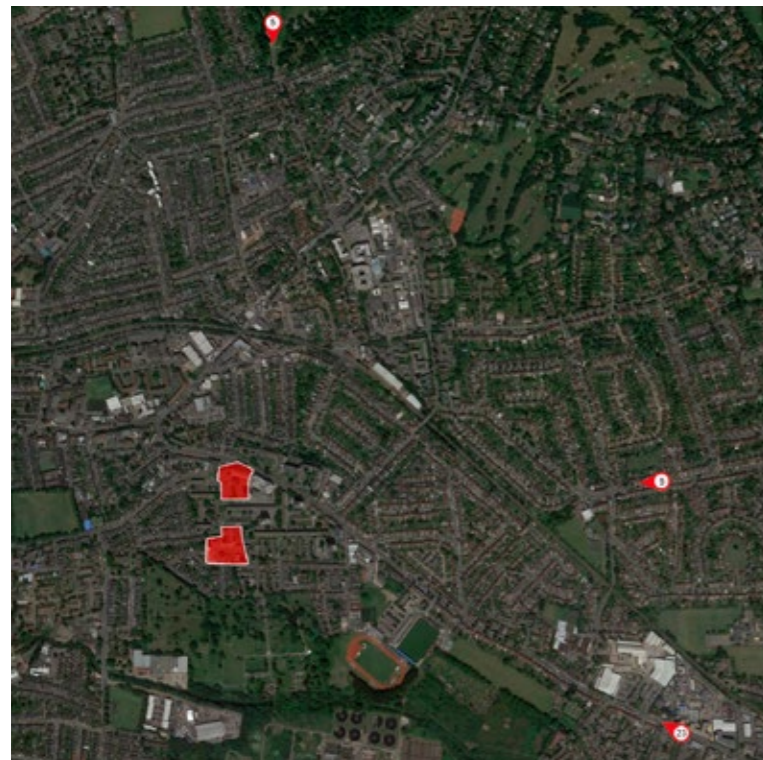


3.8 Final camera matched photomontage

View 23a

3.1 Ordinance survey co-ordinates

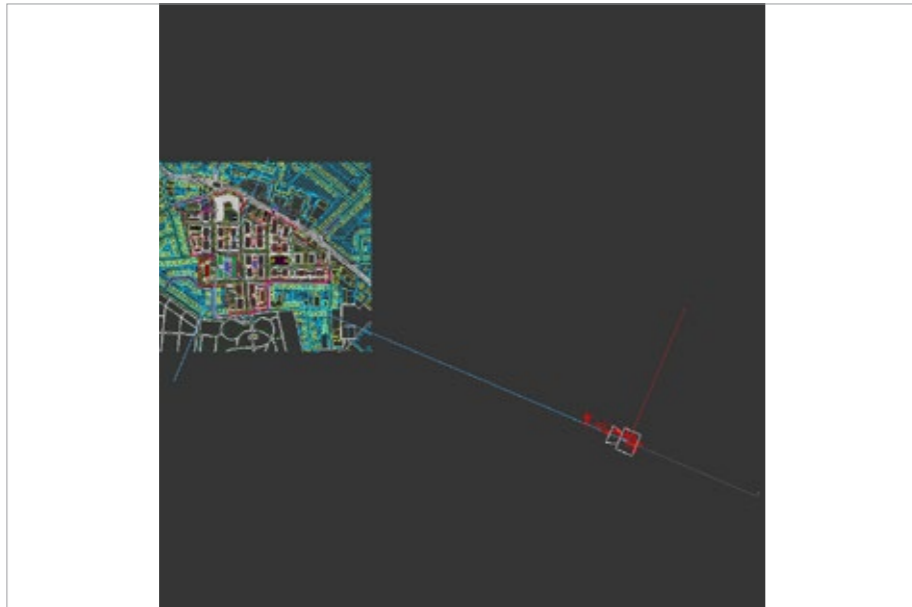
Point Ref	Eastings	Northings	AOD height
2301	520291.346	168484.093	17.481
2302	520236.578	168509.819	17.538
2303	520237.579	168511.097	25.114
2304	520276.946	168490.072	16.100
2305	520180.120	168554.720	19.291
2306	520220.003	168525.126	17.614
2307	520265.507	168514.758	19.671
2308	520231.600	168533.259	24.540
2309	520271.898	168515.283	20.296
2310	520175.445	168539.670	24.854
2311	520210.031	168535.544	24.941
2312	520257.078	168518.033	17.650
2313	520176.171	168559.233	22.548
2314	520291.225	168483.920	15.659
2315	520273.795	168507.560	16.938
2316	520294.541	168481.866	19.941
2317	520315.386	168470.677	18.637
2318	520298.645	168501.059	26.852
2319	520322.749	168473.871	15.336
2320	520275.404	168513.738	18.523



3.2 OS survey points marked on base photograph

3.3 View 23a camera location

Eastings 520301.483m
 Northings 168481.914m
 AOD height 16.622m
 Approx distance to centre of site 1269m
 Approx bearing from North 293°



3.4 Screen grab of camera location in 3DS Max software



3.5 Screen grab of calculated horizon line



3.6 Screen grab of camera matching to survey data



3.7 Screen grab of model matched to photograph



3.8 Final camera matched photomontage

View 24

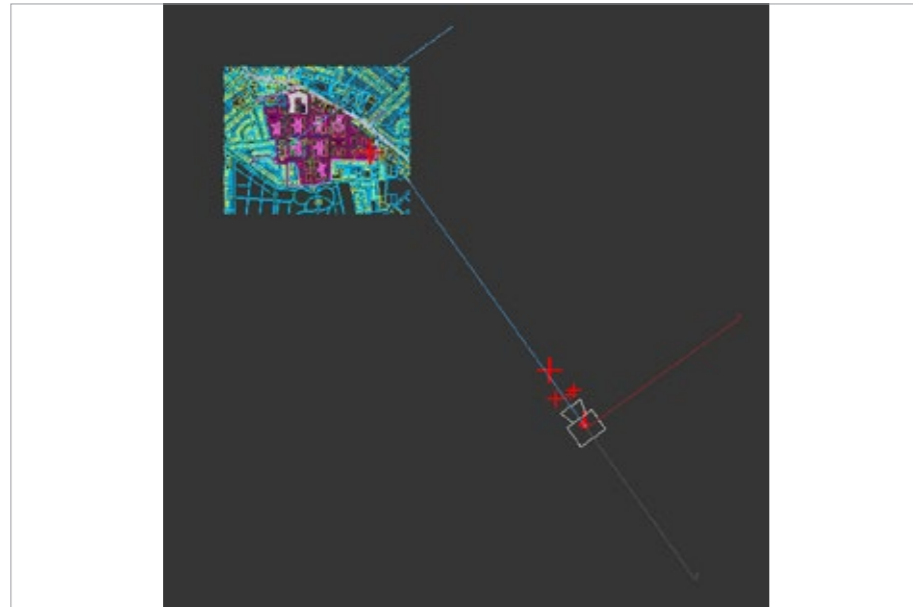
3.1 Ordinance survey co-ordinates			
Point Ref	Eastings	Northings	AOD height
2401	520210.476	167925.122	14.496
2402	520210.485	167925.089	14.051
2403	520212.339	167927.216	14.586
2404	520212.345	167927.193	14.150
2405	520211.270	167931.471	14.599
2406	520211.280	167931.464	14.145
2407	520199.713	167936.503	14.485
2408	520206.298	167932.865	14.495
2409	520202.900	167940.067	14.497
2410	520211.035	167942.915	14.630
2411	520214.545	167933.355	14.632
2412	520073.440	168146.528	14.016
2413	520167.579	168069.495	14.921
2414	520155.150	168051.734	15.397
2415	520203.728	167965.723	14.481
2416	520096.898	168035.107	14.354



3.2 OS survey points marked on base photograph

3.3 View 24 camera location

Eastings 520215.464m
 Northings 167922.779m
 AOD height 15.727m
 Approx distance to centre of site 1548m
 Approx bearing from North 324°



3.4 Screen grab of camera location in 3DS Max software



3.5 Screen grab of calculated horizon line



3.6 Screen grab of camera matching to survey data



3.7 Screen grab of model matched to photograph



3.8 Final camera matched photomontage

View 25

3.1 Ordinance survey co-ordinates

Point Ref	Eastings	Northings	AOD height
2501	518296.021	169187.241	10.828
2502	518299.732	169194.548	13.483
2503	518301.701	169179.833	16.612
2504	518302.045	169177.621	23.922
2505	518274.414	169168.071	12.193
2506	518308.931	169168.615	12.801
2507	518284.145	169175.572	12.155
2508	518300.798	169184.736	14.508
2509	518338.957	169156.553	12.703
2510	518262.013	169170.797	9.224
2511	518273.736	169161.016	11.900
2512	518273.719	169160.149	14.618
2513	518278.025	169164.540	11.936
2514	518276.906	169161.855	17.325
2515	518259.713	169168.066	9.225
2516	518268.758	169176.945	12.519

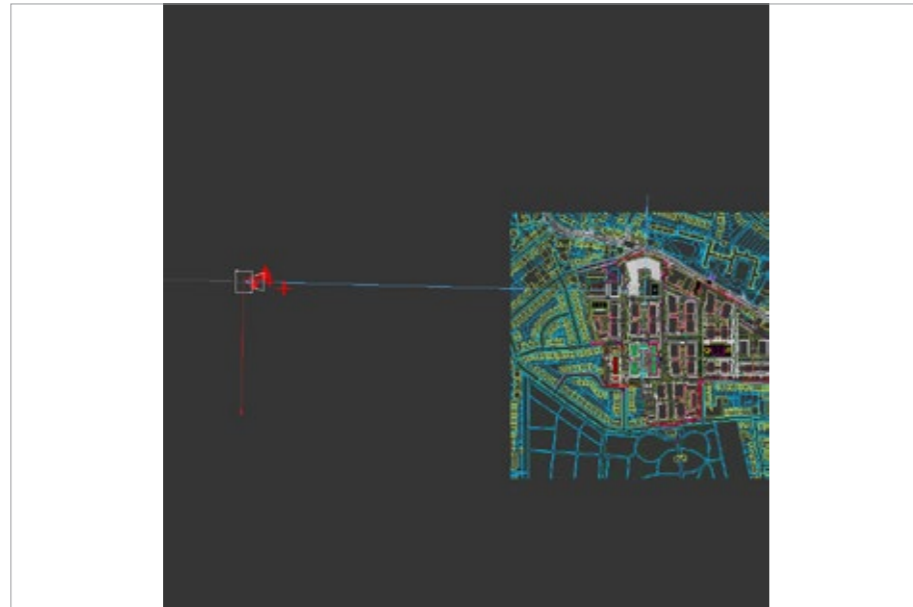


3.2 OS survey points marked on base photograph



3.3 View 25 camera location

Eastings 518254.255m
 Northings 169170.471m
 AOD height 9.298m
 Approx distance to centre of site 929m
 Approx bearing from North 91°



3.4 Screen grab of camera location in 3DS Max software



3.5 Screen grab of calculated horizon line



3.6 Screen grab of camera matching to survey data



3.7 Screen grab of model matched to photograph



3.8 Final camera matched photomontage

View 26a

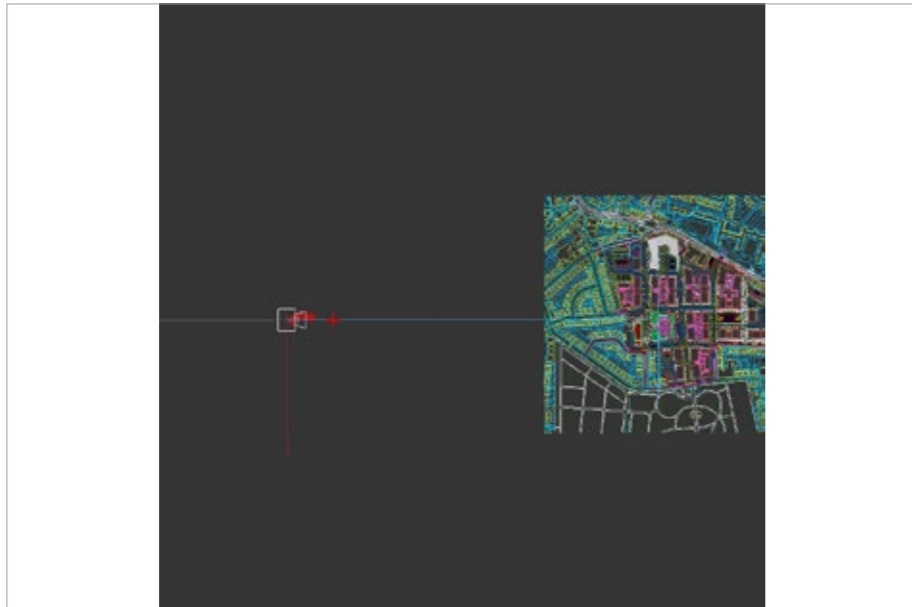
3.1 Ordinance survey co-ordinates			
Point Ref	Eastings	Northings	AOD height
26A01	518224.836	169032.367	16.742
26A02	518221.286	169028.455	12.754
26A03	518235.310	169032.299	14.124
26A04	518228.034	169027.808	10.218
26A05	518251.483	169032.984	17.948
26A06	518262.247	169025.368	13.340
26A07	518210.373	169022.060	8.940
26A08	518213.283	169018.583	11.752
26A09	518218.715	169013.360	12.552
26A10	518220.269	169011.859	15.508
26A11	518315.501	169020.781	12.824
26A12	518212.358	169019.910	9.022
26A13	518265.222	169030.111	15.242
26A14	518232.428	169019.327	10.508
26A15	518247.455	169026.346	11.815
26A16	518216.370	169020.843	11.055



3.2 OS survey points marked on base photograph

3.3 View 26a camera location

Eastings	518205.054m
Northings	169020.581m
AOD height	8.974m
Approx distance to centre of site	974m
Approx bearing from North	90°



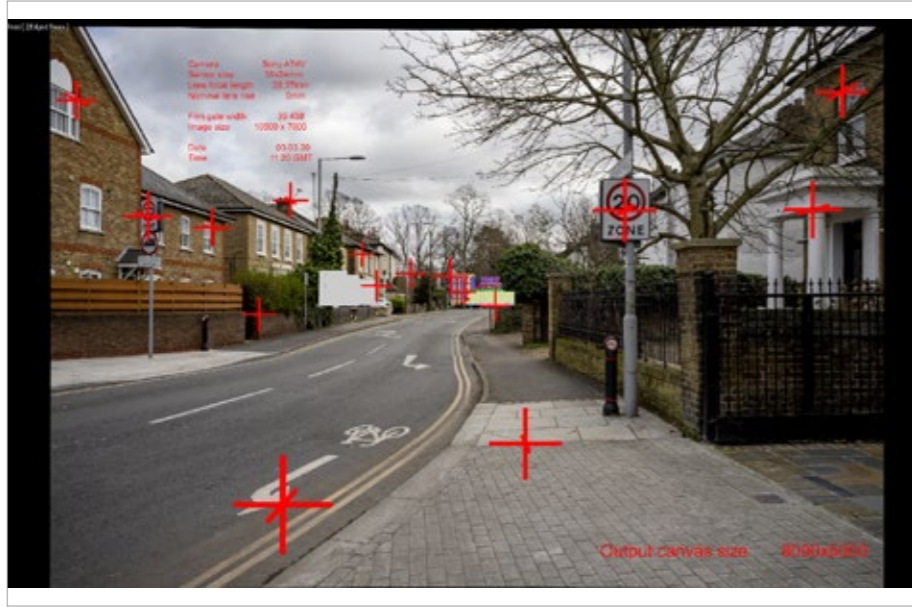
3.4 Screen grab of camera location in 3DS Max software



3.5 Screen grab of calculated horizon line



3.6 Screen grab of camera matching to survey data



3.7 Screen grab of model matched to photograph



3.8 Final camera matched photomontage

View 27

3.1 Ordinance survey co-ordinates

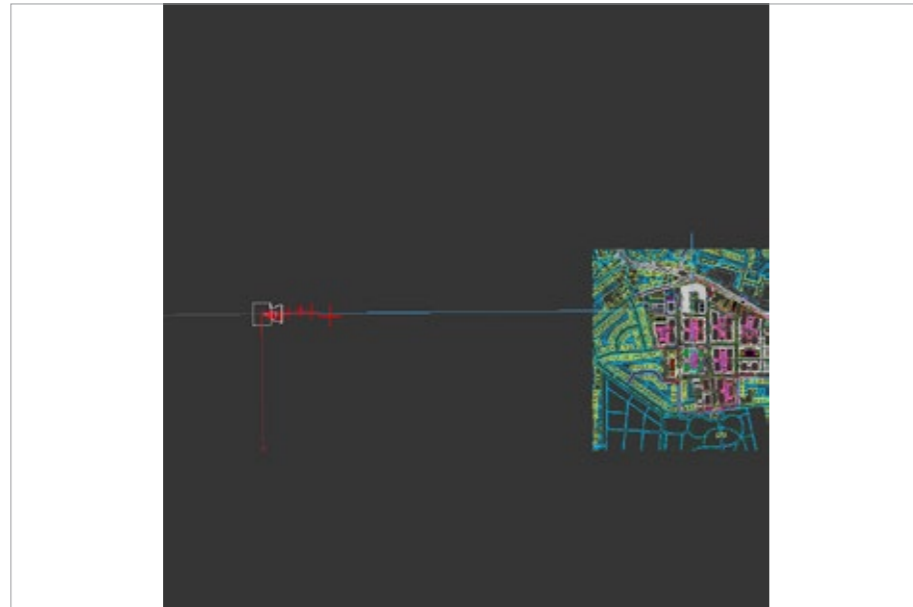
Point Ref	Eastings	Northings	AOD height
2701	517894.745	169135.969	7.495
2702	517898.770	169138.360	7.427
2703	517906.330	169138.775	11.491
2704	517912.131	169137.460	16.807
2705	517999.054	169143.019	22.191
2706	518081.341	169129.292	20.531
2707	517940.226	169131.179	18.801
2708	517926.892	169130.989	10.864
2709	517918.768	169128.848	10.813
2710	517915.101	169128.808	16.726
2711	517964.491	169136.090	8.409
2712	517966.008	169141.070	10.618
2713	517906.262	169126.811	14.092
2714	517898.731	169132.052	7.509
2715	517905.595	169126.834	7.659
2716	518030.511	169142.127	15.914
2717	517926.039	169139.337	10.243



3.2 OS survey points marked on base photograph

3.3 View 27 camera location

Eastings 517890.114m
 Northings 169135.313m
 AOD height 7.433m
 Approx distance to centre of site 1289m
 Approx bearing from North 89°



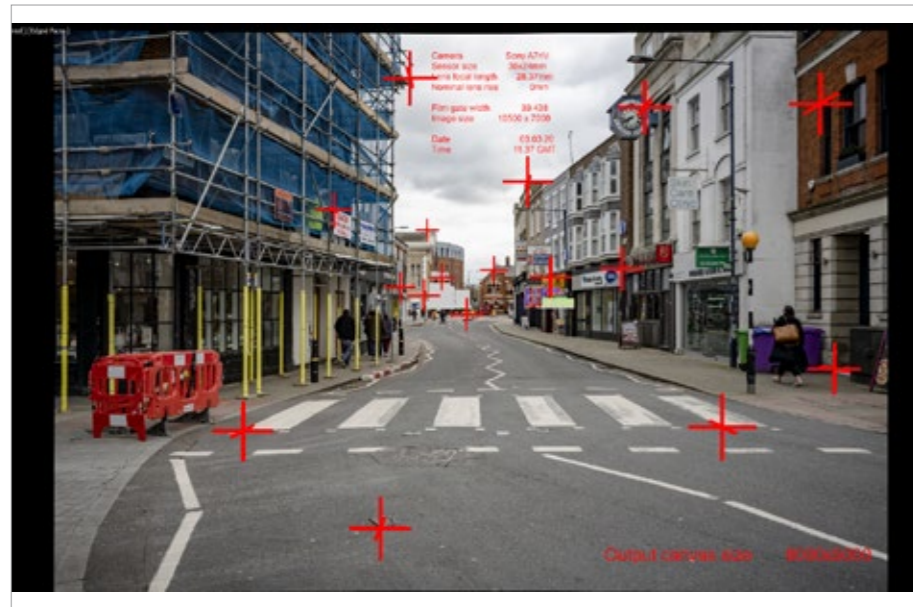
3.4 Screen grab of camera location in 3DS Max software



3.5 Screen grab of calculated horizon line



3.6 Screen grab of camera matching to survey data



3.7 Screen grab of model matched to photograph



3.8 Final camera matched photomontage

View 28

3.1 Ordinance survey co-ordinates

Point Ref	Eastings	Northings	AOD height
2801	518508.739	169360.425	16.637
2802	518522.270	169350.943	16.746
2803	518532.039	169347.928	13.707
2804	518513.634	169347.454	11.176
2805	518519.206	169334.647	12.482
2806	518492.927	169348.208	9.630
2807	518573.228	169317.451	15.891
2808	518590.390	169318.193	16.696
2809	518492.047	169352.185	8.861
2810	518508.090	169354.014	9.939
2811	518619.038	169342.022	12.522
2812	518501.574	169341.793	11.289
2813	518502.389	169341.972	17.151
2814	518585.929	169326.713	12.193



3.2 OS survey points marked on base photograph



3.3 View 28 camera location

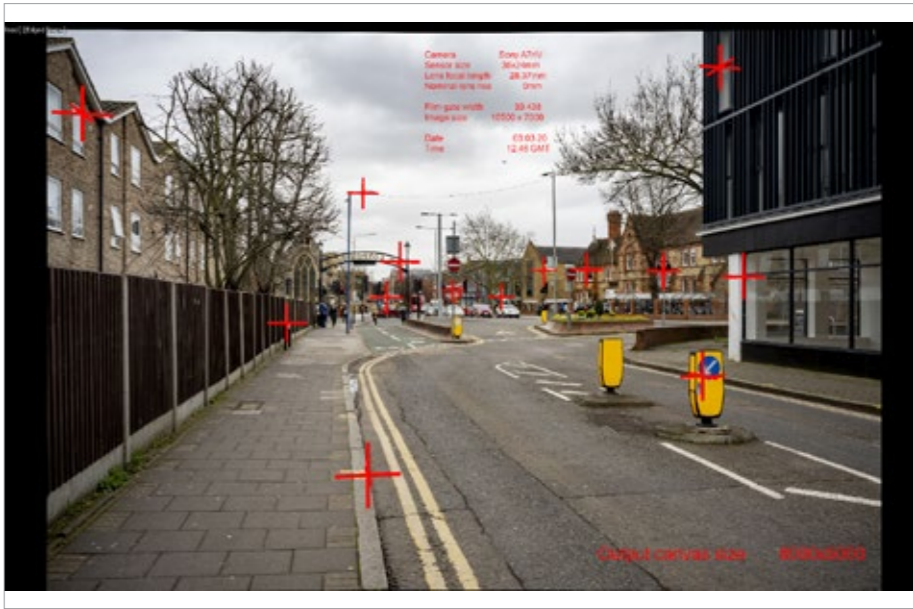
Eastings 518485.843m
 Northings 169352.503m
 AOD height 8.816m
 Approx distance to centre of site 747m
 Approx bearing from North 101°



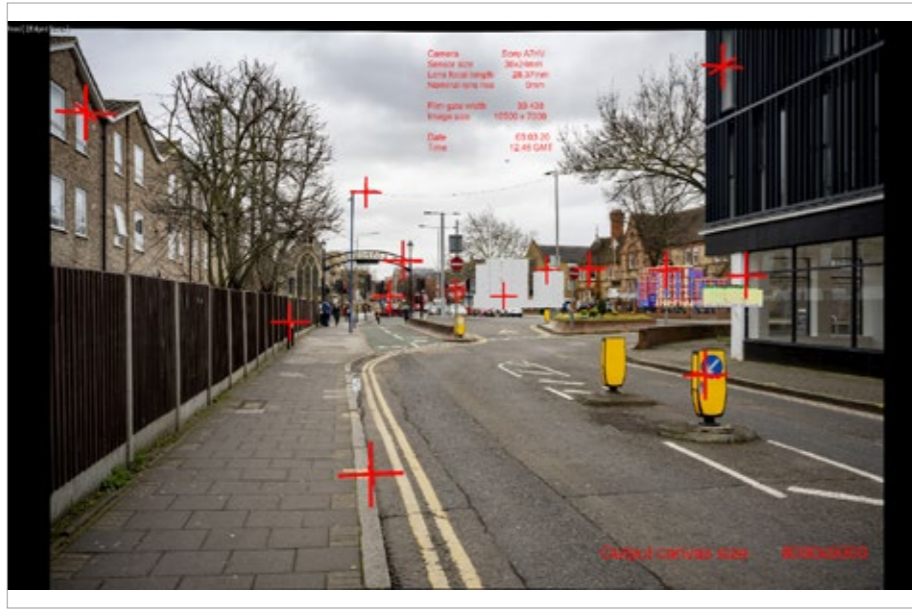
3.4 Screen grab of camera location in 3DS Max software



3.5 Screen grab of calculated horizon line



3.6 Screen grab of camera matching to survey data



3.7 Screen grab of model matched to photograph



3.8 Final camera matched photomontage



3.4 Screen grab of camera location in 3DS Max software



3.5 Screen grab of calculated horizon line



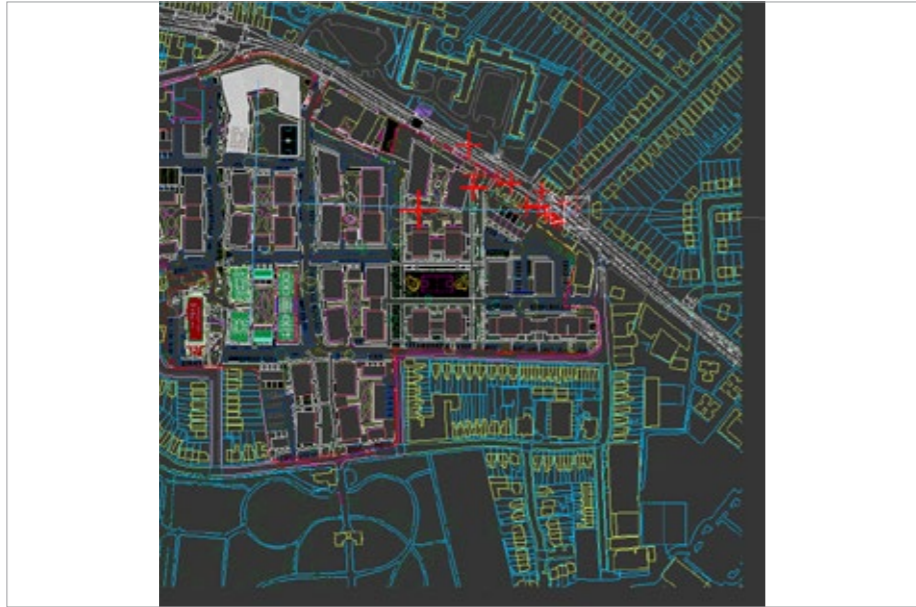
3.6 Screen grab of camera matching to survey data



3.7 Screen grab of model matched to photograph



3.8 Final camera matched photomontage



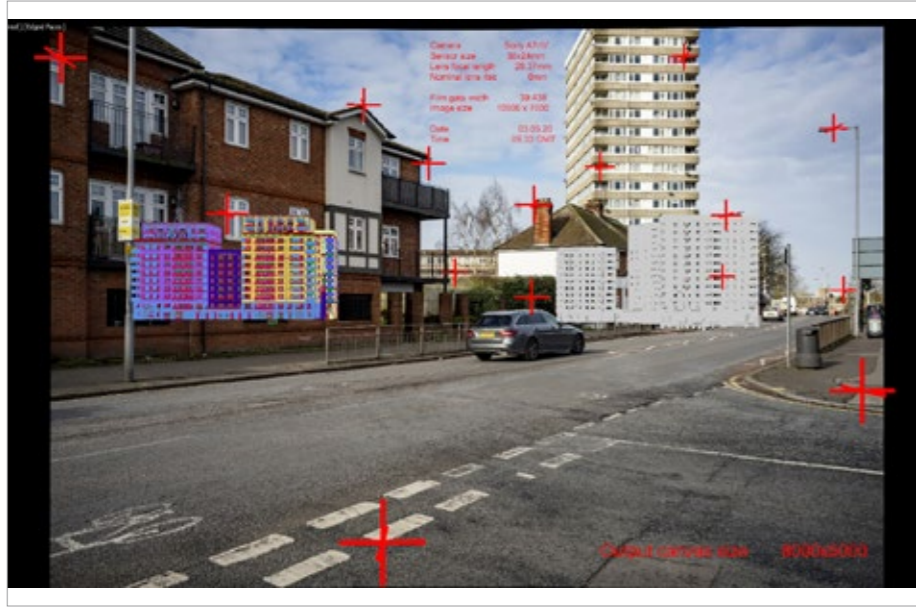
3.4 Screen grab of camera location in 3DS Max software



3.5 Screen grab of calculated horizon line



3.6 Screen grab of camera matching to survey data



3.7 Screen grab of model matched to photograph



3.8 Final camera matched photomontage

4.0 Final verified photomontages

View 1 existing

Single frame image | Focal length 28.37mm | Camera height above survey point 1600mm | Nominal lens rise 0mm | Date 06.03.20 | Time 15:10



View 1 proposed



To achieve the optimum viewing distance of up to 500mm, we recommend printing this image edge to edge on A2 landscape and viewing it on site from a distance of 470mm. Please refer to section 2.8 on page 4 of this document for further information.

View 2a existing

Single frame image | Focal length 28.37mm | Camera height above survey point 1588mm | Nominal lens rise 0mm | Date 03.03.20 | Time 12:09



View 2a proposed



To achieve the optimum viewing distance of up to 500mm, we recommend printing this image edge to edge on A2 landscape and viewing it on site from a distance of 470mm. Please refer to section 2.8 on page 4 of this document for further information.

View 3 existing

Single frame image | Focal length 28.37mm | Camera height above survey point 1628mm | Nominal lens rise 0mm | Date 03.03.20 | Time 11:49



View 3 proposed



To achieve the optimum viewing distance of up to 500mm, we recommend printing this image edge to edge on A2 landscape and viewing it on site from a distance of 470mm. Please refer to section 2.8 on page 4 of this document for further information.

View 4 existing

Single frame image | Focal length 28.37mm | Camera height above survey point 1621mm | Nominal lens rise 0mm | Date 06.03.20 | Time 11:01



View 4 proposed



To achieve the optimum viewing distance of up to 500mm, we recommend printing this image edge to edge on A2 landscape and viewing it on site from a distance of 470mm. Please refer to section 2.8 on page 4 of this document for further information.

View 5 existing

Single frame image | Focal length 28.37mm | Camera height above survey point 1600mm | Nominal lens rise 0mm | Date 06.03.20 | Time 12:00



View 5 proposed



To achieve the optimum viewing distance of up to 500mm, we recommend printing this image edge to edge on A2 landscape and viewing it on site from a distance of 470mm. Please refer to section 2.8 on page 4 of this document for further information.

View 6 existing

Single frame image | Focal length 28.37mm | Camera height above survey point 1600mm | Nominal lens rise 0mm | Date 06.03.20 | Time 11:29



View 6 proposed



To achieve the optimum viewing distance of up to 500mm, we recommend printing this image edge to edge on A2 landscape and viewing it on site from a distance of 470mm. Please refer to section 2.8 on page 4 of this document for further information.

View 7 existing

Single frame image | Focal length 28.37mm | Camera height above survey point 1590mm | Nominal lens rise 0mm | Date 03.03.20 | Time 09:13



View 7 proposed



To achieve the optimum viewing distance of up to 500mm, we recommend printing this image edge to edge on A2 landscape and viewing it on site from a distance of 470mm. Please refer to section 2.8 on page 4 of this document for further information.

View 8 existing

Single frame image | Focal length 28.37mm | Camera height above survey point 1609mm | Nominal lens rise 0mm | Date 03.03.20 | Time 09:22



View 8 proposed



To achieve the optimum viewing distance of up to 500mm, we recommend printing this image edge to edge on A2 landscape and viewing it on site from a distance of 470mm. Please refer to section 2.8 on page 4 of this document for further information.