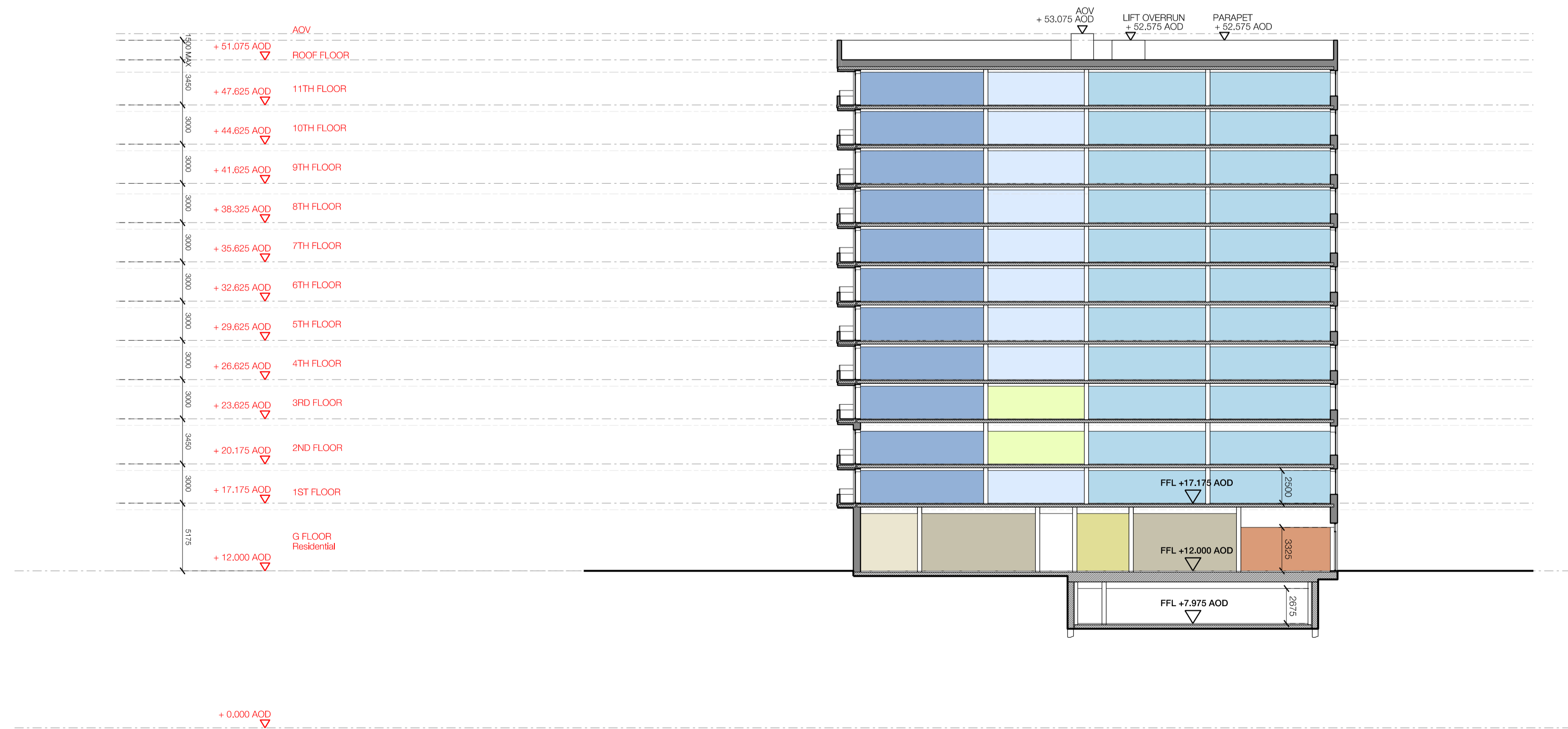


01 Section E-E
1:250



02 Section F-F
1:250

Drawing Notes

Rainwater drainage

Building roofs and residential balconies will be positively drained with external rainwater downpipes discreetly located where possible in semi-enclosed or fully inset balcony recesses.
Drainage details will be developed in the next stage of design and submitted for approval by discharge of Condition

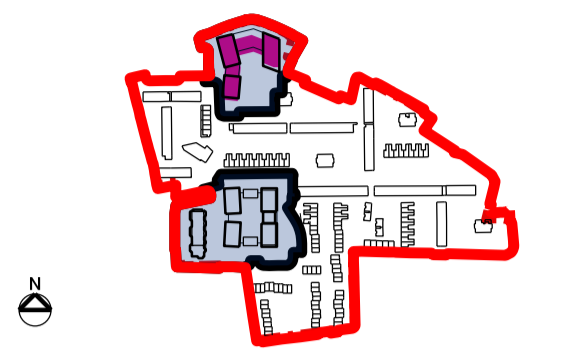
General Notes

DO NOT SCALE. All dimensions must be checked on site, errors are to be reported.

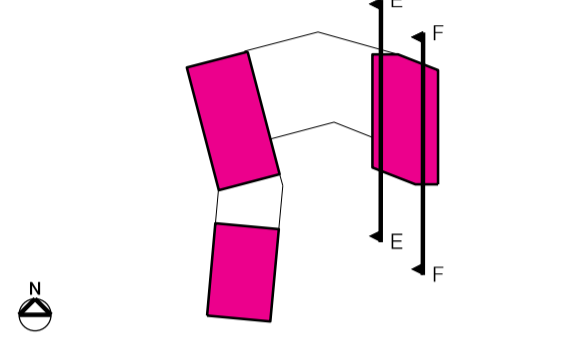
All illustrated material is subject to copyright. Unless otherwise agreed in writing, all rights to use this document are subject to payment of all Architect's charges. This document may only be used for the express purpose and project for which it has been created and delivered, as notified in writing by the Architect. This document may not be otherwise used or copied. Any unauthorised use of this document is at the user's sole risk and without limiting the Architect's rights the user releases and indemnifies the Architect from and against all loss so arising.

Contractors must ensure that cross referenced drawings and specifications noted on these drawings are checked on a regular basis to ensure that the latest revisions are used.

Key Plan



Key Plan



Colour Key

Residential		
Social Rent	Private	Ancillary
1B2P		Plant
2B3P	2B3P	Substation
2B4P	2B4P	Refuse
3B4P	3B5P	Cycle Storage
Shared Equity		
1B2P		
Non-Residential		
Community Centre	Retail	Workspace
Storage	Water Tank & Pumps	

Issue Record By Chk Date

PL1	For planning approval	CW	NE	13.11.2020
-----	-----------------------	----	----	------------

Title
Building C
Section E-E F-F

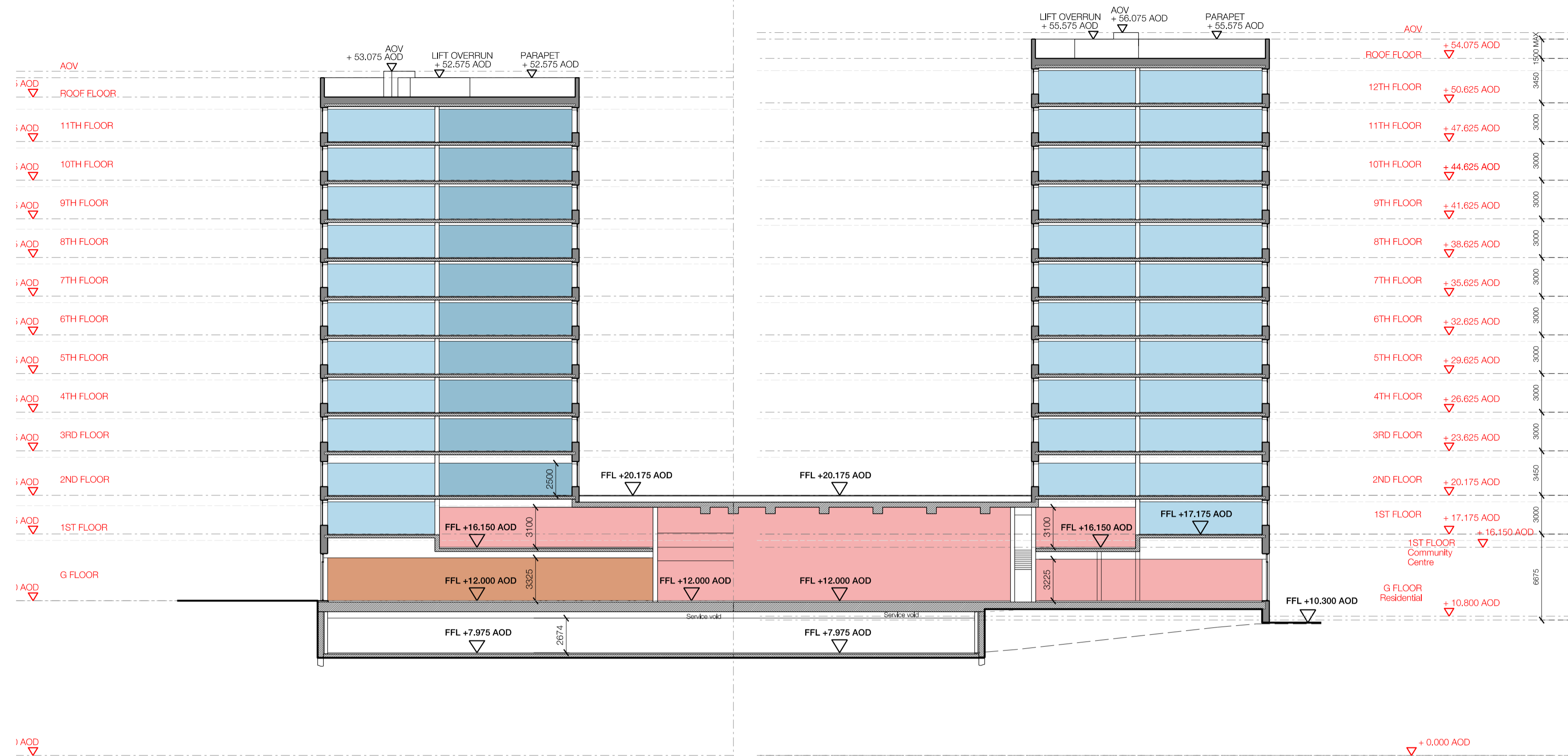
Project
Cambridge Road

Scale
1:250 @ A1 1:500 @ A3

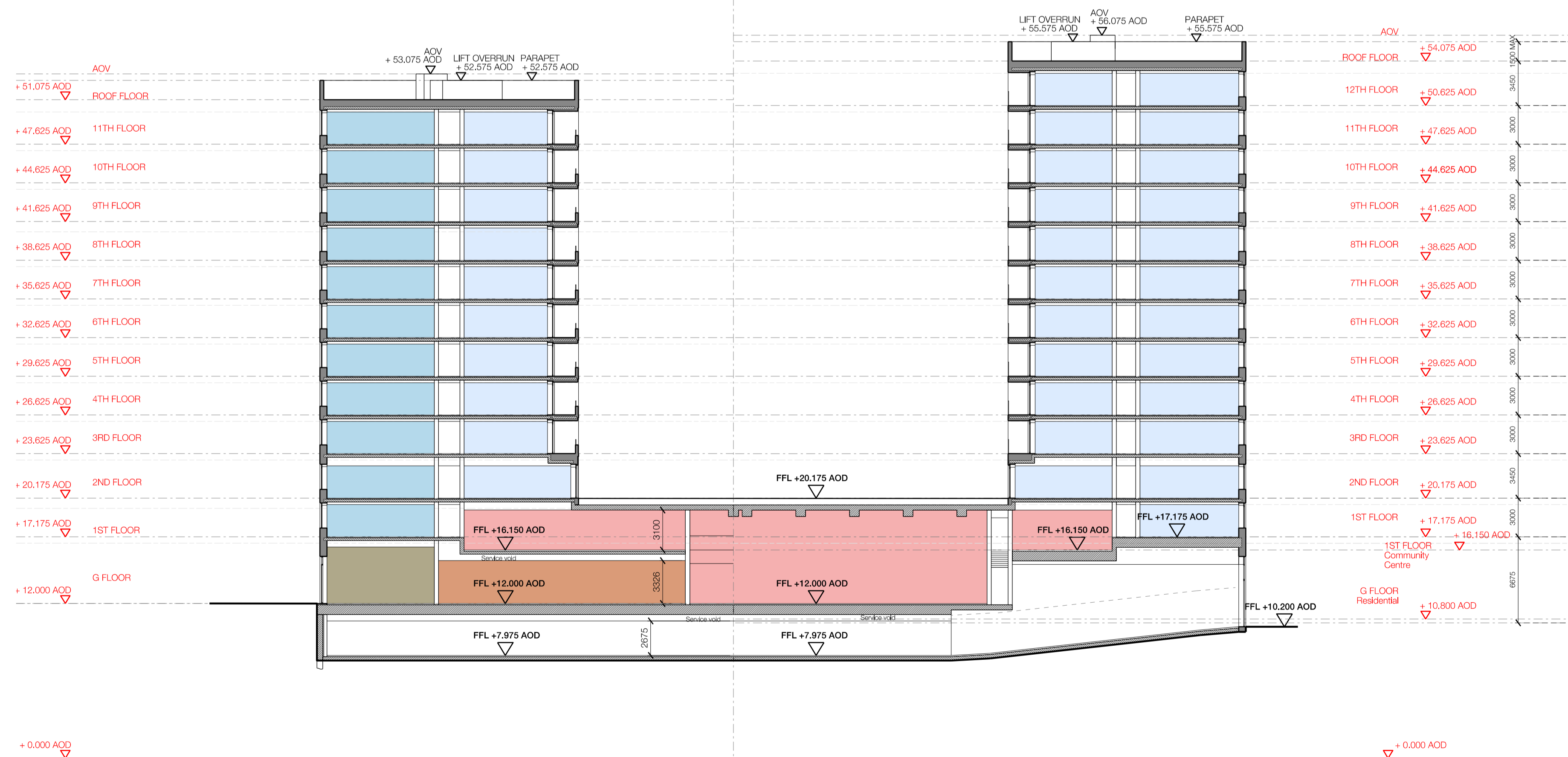
Status
For Planning Approval

Drawing Number 503-PTA-CZ-ZZ-DR-A-1916
Revision PL1

Patel Taylor
48 Rawstorne Street
London EC1V 7ND
T +44 (0)20 7278 2323
www.pateltaylor.co.uk



01 Section G-G
1:250



02 Section H-H
1:250

Drawing Notes

Rainwater drainage
Building roofs and residential balconies will be positively drained with external rainwater downpipes discreetly located where possible in semi-enclosed or fully inset balcony recesses.
Drainage details will be developed in the next stage of design and submitted for approval by discharge of Condition

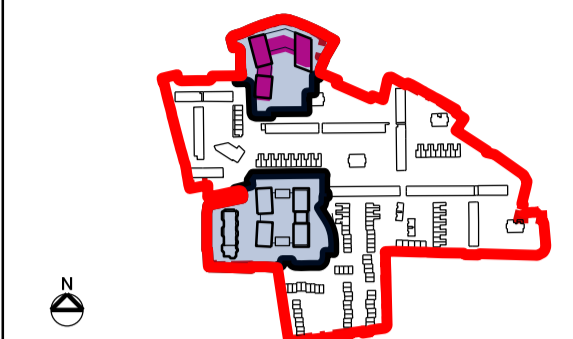
General Notes

DO NOT SCALE. All dimensions must be checked on site, errors are to be reported.

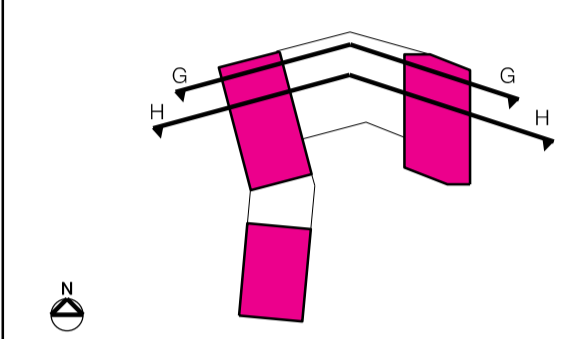
All illustrated material is subject to copyright. Unless otherwise agreed in writing, all rights to use this document are subject to payment of all Architect's charges. This document may only be used for the express purpose and project for which it has been created and delivered, as notified in writing by the Architect. This document may not be otherwise used or copied. Any unauthorised use of this document is at the user's sole risk and without limiting the Architect's rights the user releases and indemnifies the Architect from and against all loss so arising.

Contractors must ensure that cross referenced drawings and specifications noted on these drawings are checked on a regular basis to ensure that the latest revisions are used.

Key Plan



Key Plan



Colour Key

Residential		
Social Rent	Private	Ancillary
1B2P	1B2P	Plant
2B3P	2B3P	Substation
2B4P	2B4P	Refuse
3B4P	3B5P	Cycle Storage
Non-Residential		
Community Centre	Retail	Workspace
Storage	Water Tank & Pumps	

Issue Record

By	Chk	Date
PL1	CW	NE 13.11.2020

Title
Building C
Section G-G H-H

Project
Cambridge Road

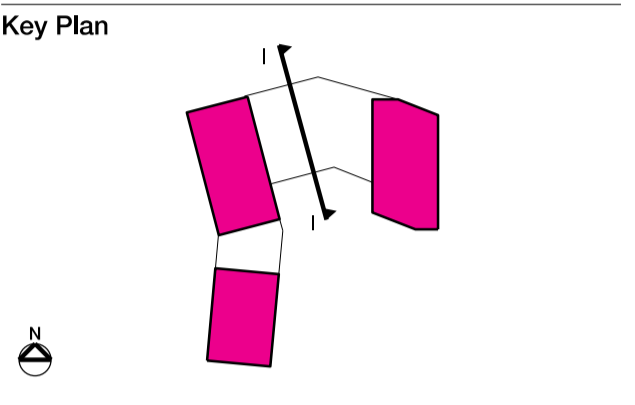
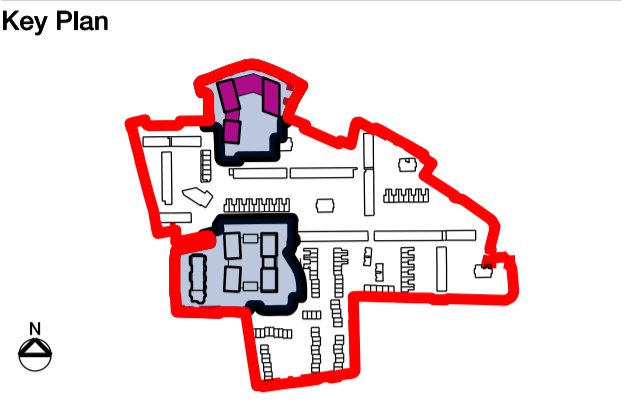
Scale
1:250 @ A1 1:500 @ A3

Status
For Planning Approval

Drawing Number 503-PTA-CZ-ZZ-DR-A-1917
Revision PL1

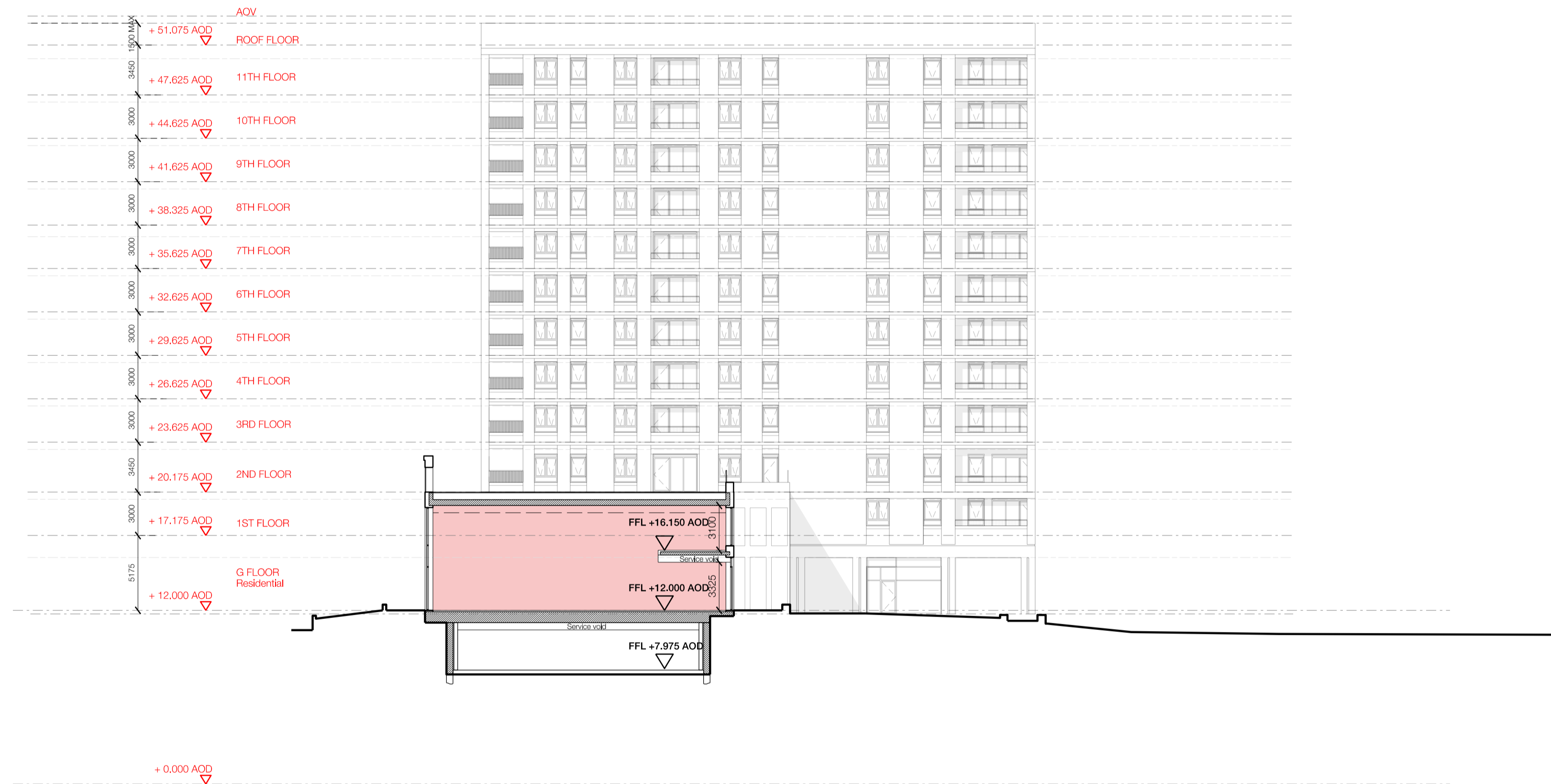
Patel Taylor
48 Rawstorne Street
London EC1V 7ND
T +44 (0)20 7278 2323
www.pateltaylor.co.uk

General Notes
 DO NOT SCALE. All dimensions must be checked on site, errors are to be reported.
 All illustrated material is subject to copyright. Unless otherwise agreed in writing, all rights to use this document are subject to payment of all Architect's charges. This document may only be used for the express purpose and project for which it has been created and delivered, as notified in writing by the Architect. This document may not be otherwise used or copied. Any unauthorised use of this document is at the user's sole risk and without limiting the Architect's rights the user releases and indemnifies the Architect from and against all loss so arising.
 Contractors must ensure that cross referenced drawings and specifications noted on these drawings are checked on a regular basis to ensure that the latest revisions are used.



Colour Key

Residential		
Social Rent	Private	Ancillary
1B2P	1B2P	Plant
2B3P	2B3P	Substation
2B4P	2B4P	Refuse
3B4P	3B5P	Cycle Storage
Non-Residential		
Community Centre	Retail	Workspace
Storage	Water Tank & Pumps	



01 Section I-I
1:250

Drawing Notes
Rainwater drainage
 Building roofs and residential balconies will be positively drained with external rainwater downpipes discreetly located where possible in semi-enclosed or fully enclosed balcony recesses.
 Drainage details will be developed in the next stage of design and submitted for approval by discharge of Condition

Issue Record

By	Chk	Date
PL1	CW NE	13.11.2020

Title
 Building C
 Section I-I

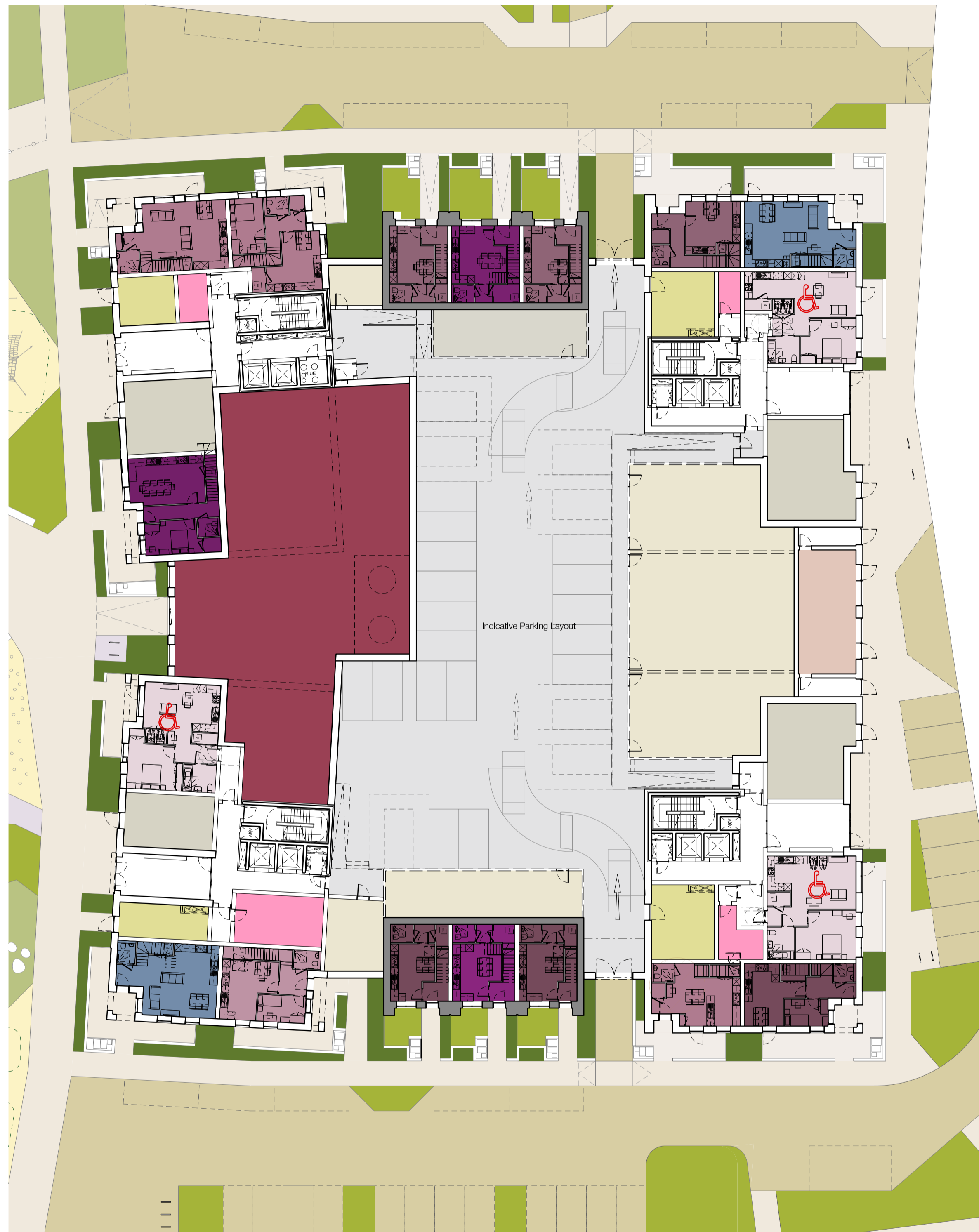
Project
 Cambridge Road

Scale
 1:250 @ A1 1:500 @ A3

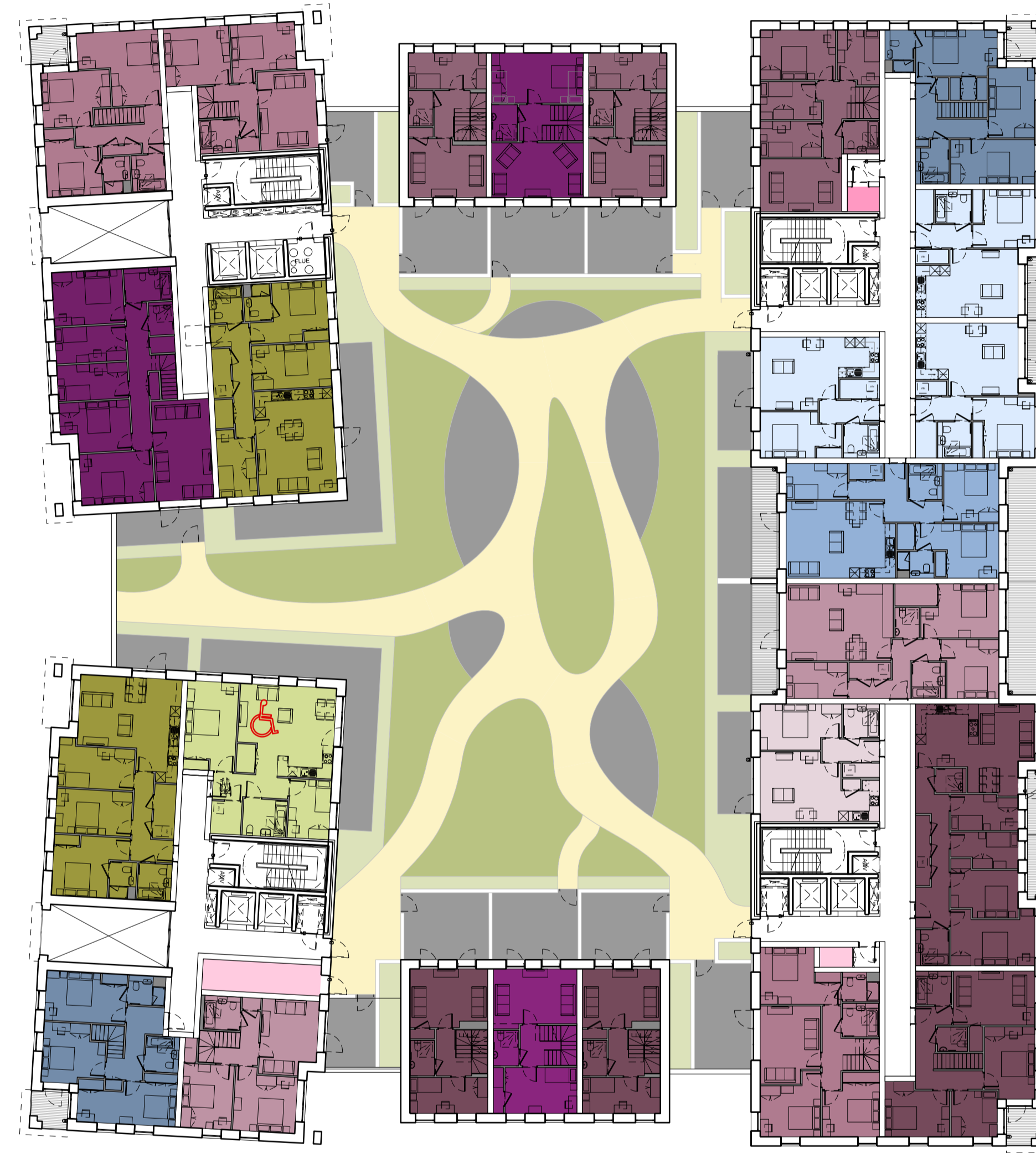
Status
 For Planning Approval

Drawing Number **Revision**
 503-PTA-CZ-ZZ-DR-A-1918 PL1

Patel Taylor
 48 Rawstorne Street
 London EC1V 7ND
 T +44 (0)20 7278 2323
 www.pateltaylor.co.uk



01 Ground Floor Plan
1:250 @ A1



02 First Floor Plan
1:250 @ A1

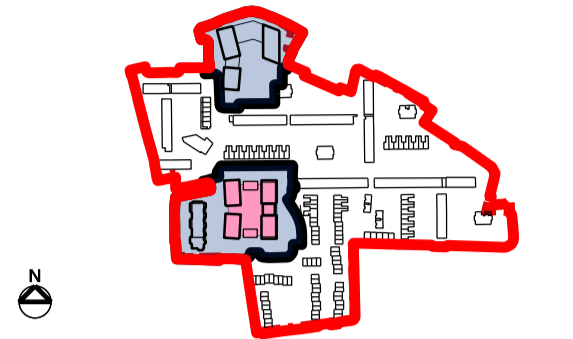
General Notes

DO NOT SCALE. All dimensions must be checked on site, errors are to be reported.

All illustrated material is subject to copyright. Unless otherwise agreed in writing, all rights to use this document are subject to payment of all Architect's charges. This document may only be used for the express purpose and project for which it has been created and delivered, as notified in writing by the Architect. This document may not be otherwise used or copied. Any unauthorised use of this document is at the user's sole risk and without limiting the Architect's rights the user releases and indemnifies the Architect from and against all loss so arising.

Contractors must ensure that cross referenced drawings and specifications noted on these drawings are checked on a regular basis to ensure that the latest revisions are used.

Key Plan



Site Boundary

- - - Title boundary
- Planning boundary
- Detailed application boundary

Colour Code

Social Rent	Shared Equity	Private
1B2P	1B2P	1B2P
2B3P	2B3P	2B3P
2B4P	2B4P	2B4P
3B4P	3B4P	3B4P
3B5P	3B5P	3B5P
3B6P	3B6P	3B6P
4B5P		
4B6P	4B6P	4B6P
4B7P	4B7P	4B7P
4B8P	4B7P	4B7P
5B6P		
5B8P		
6B10P		
Ancillary uses		
	Plant	Refuse
	Cycle storage	Storage
	Substation	CHP

Scale 1:250 @ A1



Issue Record By Chk Date

PL2	Tenure distribution amendments	CW	RM	11.10.2021
PL1	For Planning Approval	CW	NE	13.11.2020

Title
Building E
General Arrangement
Ground & First Floor Plan

Project
Cambridge Road

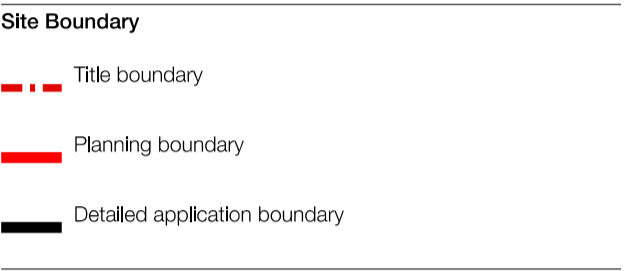
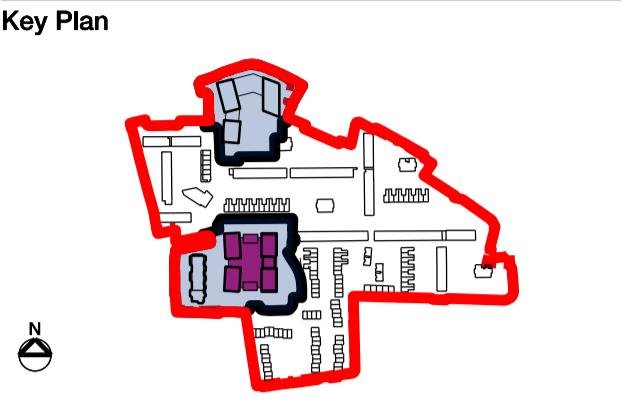
Scale
1:250 @ A1 1:500 @ A3

Status S4 - For Planning Approval **Revision** **PL2**

Drawing Number
503-PTA-EZ-ZZ-DR-A-1355

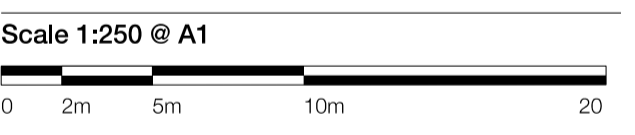
Patel Taylor
48 Rawstorne Street
London EC1V 7ND
T +44 (0)20 7278 2323
www.pateltaylor.co.uk

General Notes
 DO NOT SCALE. All dimensions must be checked on site, errors are to be reported.
 All illustrated material is subject to copyright. Unless otherwise agreed in writing, all rights to use this document are subject to payment of all Architect's charges. This document may only be used for the express purpose and project for which it has been created and delivered, as notified in writing by the Architect. This document may not be otherwise used or copied. Any unauthorised use of this document is at the user's sole risk and without limiting the Architect's rights the user releases and indemnifies the Architect from and against all loss so arising.
 Contractors must ensure that cross referenced drawings and specifications noted on these drawings are checked on a regular basis to ensure that the latest revisions are used.



Colour Code

Social Rent	Shared Equity	Private
1B2P	1B2P	1B2P
2B3P	2B3P	2B3P
2B4P	2B4P	2B4P
3B4P	3B4P	3B4P
3B5P	3B5P	3B5P
3B6P	3B6P	3B6P
4B5P		
4B6P	4B6P	4B6P
4B7P	4B7P	4B7P
4B8P	4B7P	4B7P
5B6P		
5B8P		
6B10P		



Issue Record

By	Chk	Date
PL2	Tenure distribution amendments	CW RM 11.10.2021
PL1	For Planning Approval	CW NE 13.11.2020

Title
 Building E
 General Arrangement
 Second & Third Floor Plan

Project
 Cambridge Road

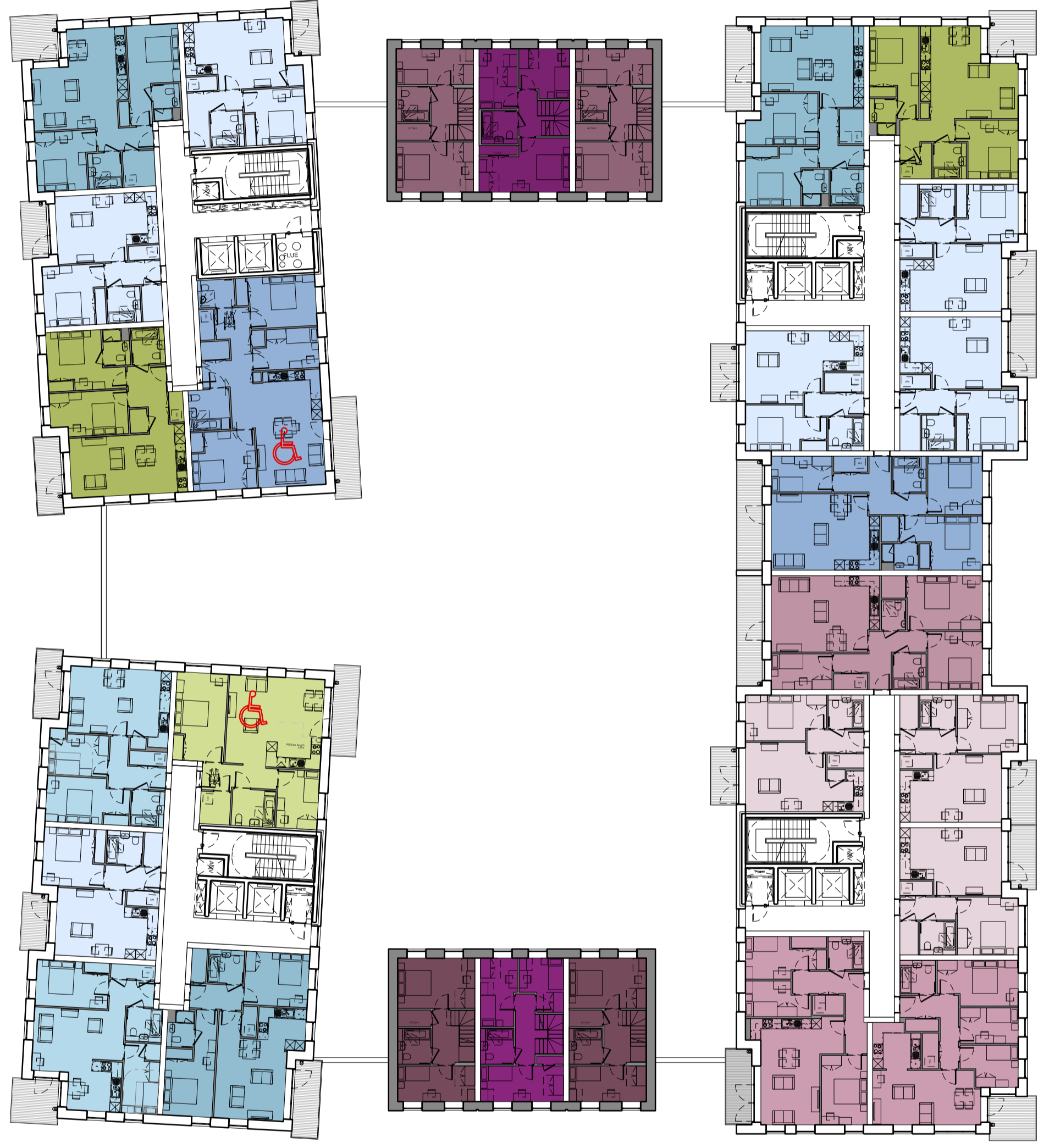
Scale
 1:250 @ A1 1:500 @ A3

Status
 S4 - For Planning Approval

Revision
 PL2

Drawing Number
 503-PTA-EZ-ZZ-DR-A-1356

Patel Taylor
 48 Rawstorne Street
 London EC1V 7ND
 T +44 (0)20 7278 2323
 www.pateltaylor.co.uk

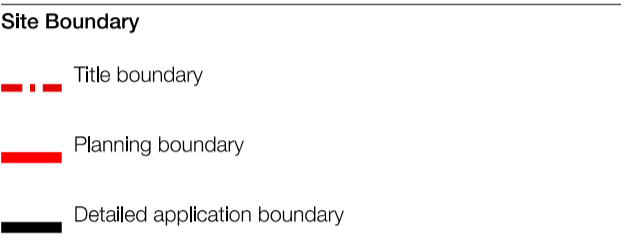
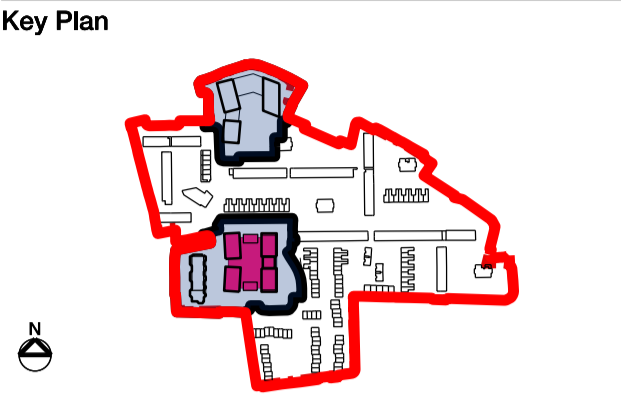


01 Second Floor Plan
 1:250 @ A1



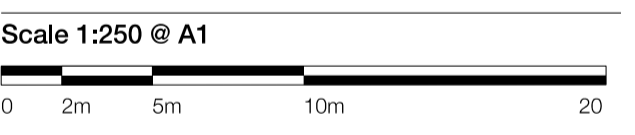
02 Third Floor Plan
 1:250 @ A1

General Notes
 DO NOT SCALE. All dimensions must be checked on site, errors are to be reported.
 All illustrated material is subject to copyright. Unless otherwise agreed in writing, all rights to use this document are subject to payment of all Architect's charges. This document may only be used for the express purpose and project for which it has been created and delivered, as notified in writing by the Architect. This document may not be otherwise used or copied. Any unauthorised use of this document is at the user's sole risk and without limiting the Architect's rights the user releases and indemnifies the Architect from and against all loss so arising.
 Contractors must ensure that cross referenced drawings and specifications noted on these drawings are checked on a regular basis to ensure that the latest revisions are used.



Colour Code

Social Rent	Shared Equity	Private
1B2P	1B2P	1B2P
2B3P	2B3P	2B3P
2B4P	2B4P	2B4P
3B4P	3B4P	3B4P
3B5P	3B5P	3B5P
3B6P	3B6P	3B6P
4B5P		
4B6P	4B6P	4B6P
4B7P	4B7P	4B7P
4B8P	4B7P	4B7P
5B6P		
5B8P		
6B10P		



Issue Record

	By	Chk	Date
PL2 Tenure distribution amendments	CW	RM	11.10.2021
PL1 For Planning Approval	CW	NE	13.11.2020

Title
 Building E
 General Arrangement
 Fourth & Fifth Floor Plan

Project
 Cambridge Road

Scale
 1:250 @ A1 1:500 @ A3

Status
 S4 - For Planning Approval

Revision
 PL2

Drawing Number
 503-PTA-EZ-ZZ-DR-A-1357

Patel Taylor
 48 Rawstorne Street
 London EC1V 7ND
 T +44 (0)20 7278 2323
 www.pateltaylor.co.uk

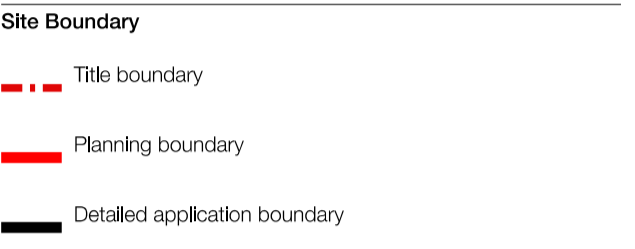
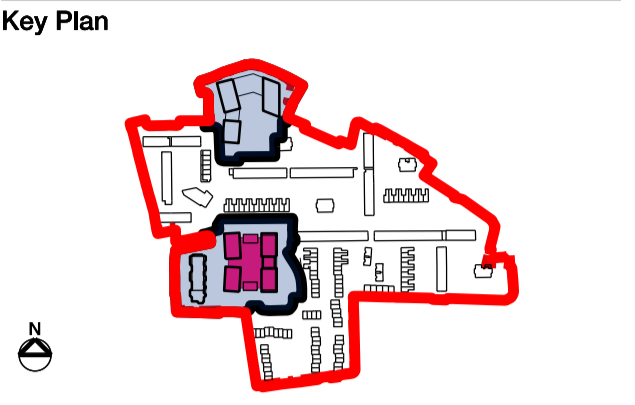


01 Fourth Floor Plan
 1.250 @ A1



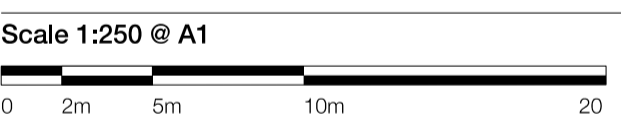
02 Fifth Floor Plan
 1.250 @ A1

General Notes
 DO NOT SCALE. All dimensions must be checked on site, errors are to be reported.
 All illustrated material is subject to copyright. Unless otherwise agreed in writing, all rights to use this document are subject to payment of all Architect's charges. This document may only be used for the express purpose and project for which it has been created and delivered, as notified in writing by the Architect. This document may not be otherwise used or copied. Any unauthorised use of this document is at the user's sole risk and without limiting the Architect's rights the user releases and indemnifies the Architect from and against all loss so arising.
 Contractors must ensure that cross referenced drawings and specifications noted on these drawings are checked on a regular basis to ensure that the latest revisions are used.



Colour Code

Social Rent	Shared Equity	Private
1B2P	1B2P	1B2P
2B3P	2B3P	2B3P
2B4P	2B4P	2B4P
3B4P	3B4P	3B4P
3B5P	3B5P	3B5P
3B6P	3B6P	3B6P
4B5P		
4B6P	4B6P	4B6P
4B7P	4B7P	4B7P
4B8P	4B7P	4B7P
5B6P		
5B8P		
6B10P		



Issue Record

	By	Chk	Date
PL2 Tenure distribution amendments	CW	RM	11.10.2021
PL1 For Planning Approval	CW	NE	13.11.2020

Title
 Building E
 General Arrangement
 Sixth & Seventh Floor Plan

Project
 Cambridge Road

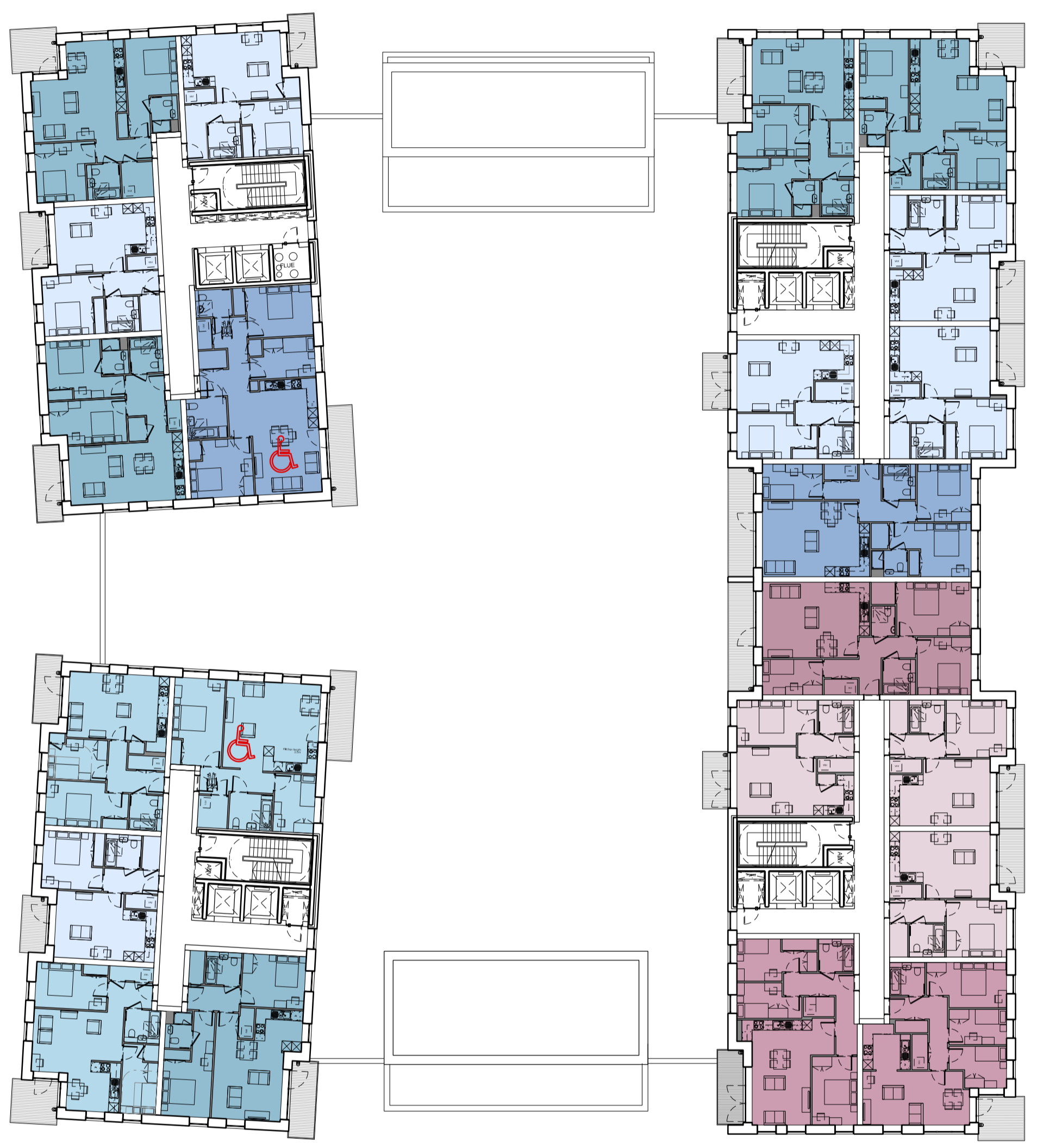
Scale
 1:250 @ A1 1:500 @ A3

Status
 S4 - For Planning Approval

Revision
 PL2

Drawing Number
 503-PTA-EZ-ZZ-DR-A-1358

Patel Taylor
 48 Rawstorne Street
 London EC1V 7ND
 T +44 (0)20 7278 2323
 www.pateltaylor.co.uk

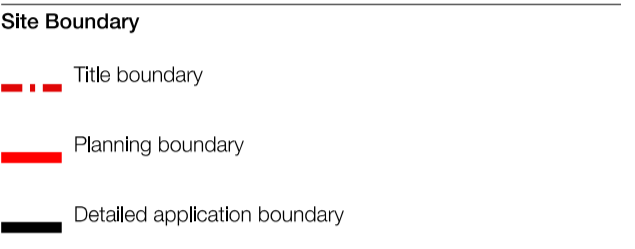
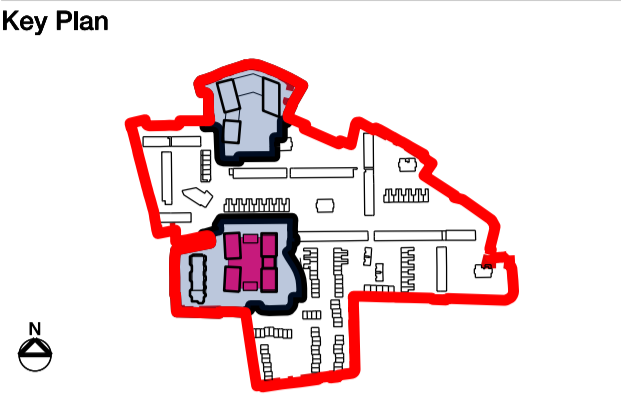


01 Sixth Floor Plan
 1.250 @ A1



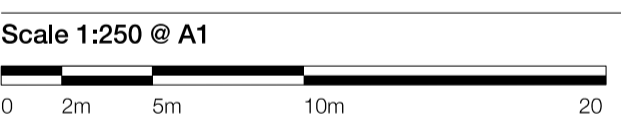
02 Seventh Floor Plan
 1.250 @ A1

General Notes
 DO NOT SCALE. All dimensions must be checked on site, errors are to be reported.
 All illustrated material is subject to copyright. Unless otherwise agreed in writing, all rights to use this document are subject to payment of all Architect's charges. This document may only be used for the express purpose and project for which it has been created and delivered, as notified in writing by the Architect. This document may not be otherwise used or copied. Any unauthorised use of this document is at the user's sole risk and without limiting the Architect's rights the user releases and indemnifies the Architect from and against all loss so arising.
 Contractors must ensure that cross referenced drawings and specifications noted on these drawings are checked on a regular basis to ensure that the latest revisions are used.



Colour Code

Social Rent	Shared Equity	Private
1B2P	1B2P	1B2P
2B3P	2B3P	2B3P
2B4P	2B4P	2B4P
3B4P	3B4P	3B4P
3B5P	3B5P	3B5P
3B6P	3B6P	3B6P
4B5P		
4B6P	4B6P	4B6P
4B7P	4B7P	4B7P
4B8P	4B7P	4B7P
5B6P		
5B8P		
6B10P		



Issue Record

By	Chk	Date
PL2	Tenure distribution amendments	CW RM 11.10.2021
PL1	For Planning Approval	CW NE 13.11.2020

Title
 Building E
 General Arrangement
 Eighth & Ninth Floor Plan

Project
 Cambridge Road

Scale
 1:250 @ A1 1:500 @ A3

Status
 S4 - For Planning Approval

Revision
 PL2

Drawing Number
 503-PTA-EZ-ZZ-DR-A-1359

Patel Taylor
 48 Rawstorne Street
 London EC1V 7ND
 T +44 (0)20 7278 2323
 www.pateltaylor.co.uk



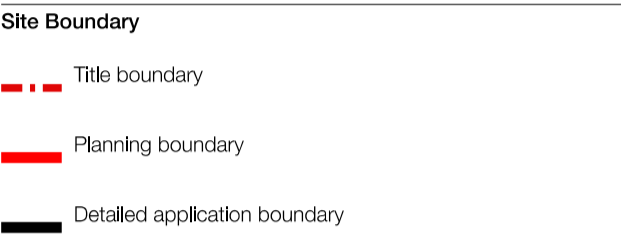
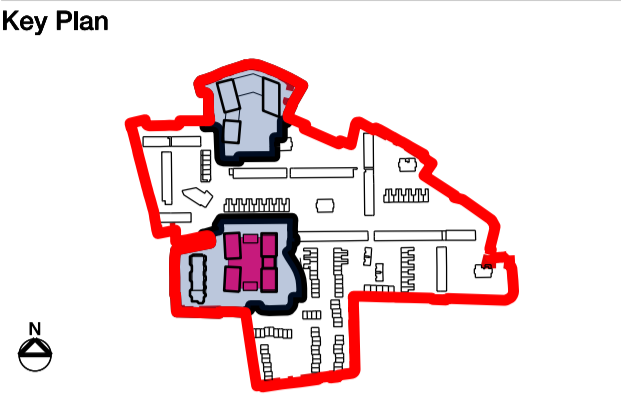
Parapet capping
 Ballasted margin
 Planted green roof
 Ballasted maintenance zone

01 Eighth Floor Plan
 1.250 @ A1



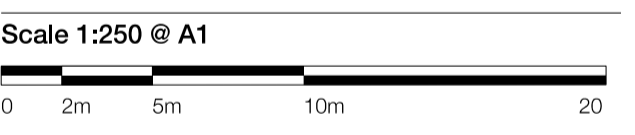
02 Ninth Floor Plan
 1.250 @ A1

General Notes
 DO NOT SCALE. All dimensions must be checked on site, errors are to be reported.
 All illustrated material is subject to copyright. Unless otherwise agreed in writing, all rights to use this document are subject to payment of all Architect's charges. This document may only be used for the express purpose and project for which it has been created and delivered, as notified in writing by the Architect. This document may not be otherwise used or copied. Any unauthorised use of this document is at the user's sole risk and without limiting the Architect's rights the user releases and indemnifies the Architect from and against all loss so arising.
 Contractors must ensure that cross referenced drawings and specifications noted on these drawings are checked on a regular basis to ensure that the latest revisions are used.



Colour Code

Social Rent	Shared Equity	Private
1B2P	1B2P	1B2P
2B3P	2B3P	2B3P
2B4P	2B4P	2B4P
3B4P	3B4P	3B4P
3B5P	3B5P	3B5P
3B6P	3B6P	3B6P
4B5P		
4B6P	4B6P	4B6P
4B7P	4B7P	4B7P
4B8P	4B7P	4B7P
5B6P		
5B8P		
6B10P		



Issue Record

By	Chk	Date
PL3	Tenure distribution amendments	CW RM 11.10.2021
PL2	For Planning Approval	NE RM 01.04.2021
PL1	For Planning Approval	CW NE 13.11.2020

Title
 Building E
 General Arrangement
 Tenth & Eleventh Floor Plan

Project
 Cambridge Road

Scale
 1:250 @ A1 1:500 @ A3

Status
 S4 - For Planning Approval **Revision PL3**

Drawing Number
 503-PTA-EZ-ZZ-DR-A-1360

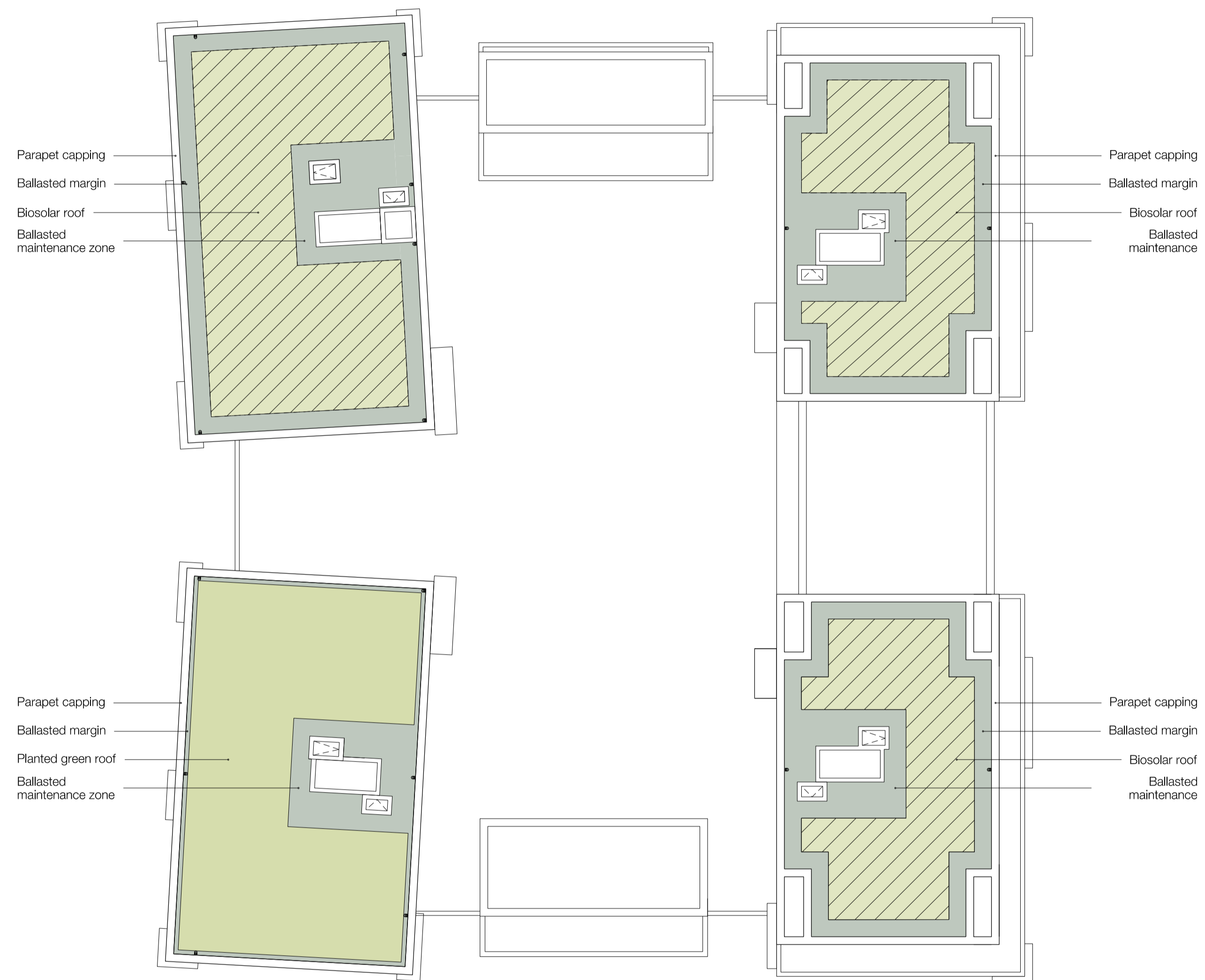
Patel Taylor
 48 Rawstorne Street
 London EC1V 7ND
 T +44 (0)20 7278 2323
 www.pateltaylor.co.uk



01 Tenth Floor Plan
 1.250 @ A1



02 Eleventh Floor Plan
 1.250 @ A1



01 Roof Plan
1:250 @ A1

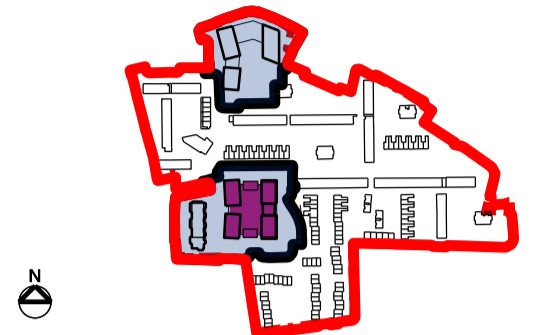
General Notes

DO NOT SCALE. All dimensions must be checked on site, errors are to be reported.

All illustrated material is subject to copyright. Unless otherwise agreed in writing, all rights to use this document are subject to payment of all Architect's charges. This document may only be used for the express purpose and project for which it has been created and delivered, as notified in writing by the Architect. This document may not be otherwise used or copied. Any unauthorised use of this document is at the user's sole risk and without limiting the Architect's rights the user releases and indemnifies the Architect from and against all loss so arising.

Contractors must ensure that cross referenced drawings and specifications noted on these drawings are checked on a regular basis to ensure that the latest revisions are used.

Key Plan



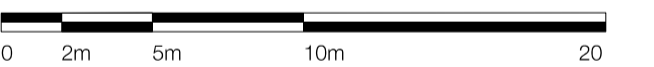
Site Boundary

- - - Title boundary
- Planning boundary
- Detailed application boundary

Colour Code

- Roof**
- Biodiverse Roof with Photovoltaic panels
 - Planted green roof

Scale 1:250 @ A1



Issue Record By Chk Date

PL2	For Planning Approval	NE	RM	01.04.2021
PL1	For Planning Approval	CW	NE	13.11.2020

Title
Building E
General Arrangement
Roof Plan

Project
Cambridge Road

Scale
1:250 @ A1 1:500 @ A3

Status For Planning Approval **Revision**

Drawing Number
503-PTA-EZ-ZZ-DR-A-1361 PL2

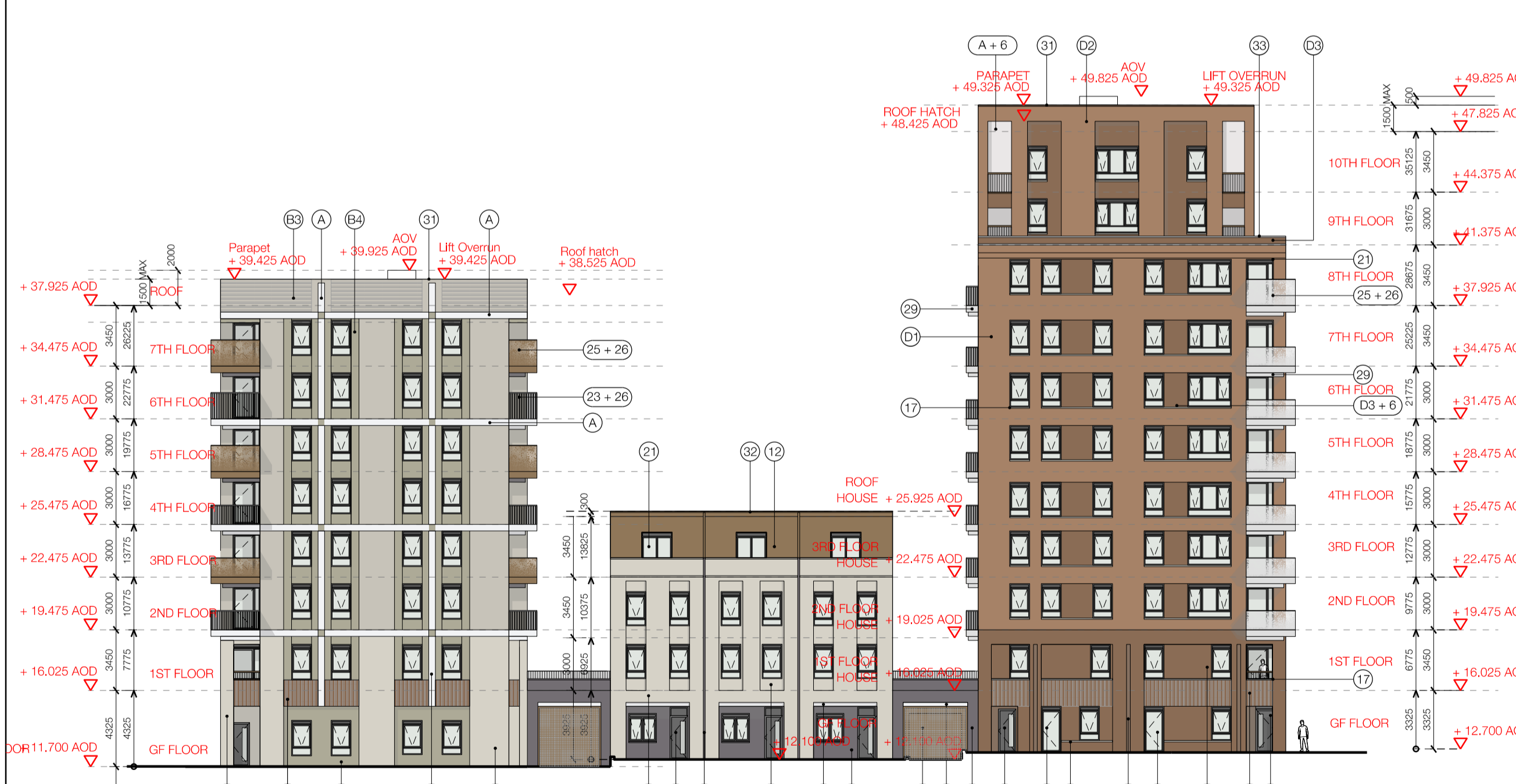
Patel Taylor
48 Rawstorne Street
London EC1V 7ND
T +44 (0)20 7278 2323
www.pateltaylor.co.uk



01 Elevation A-A (north)
Scale 1:250



02 Elevation B-B (east)
Scale 1:250



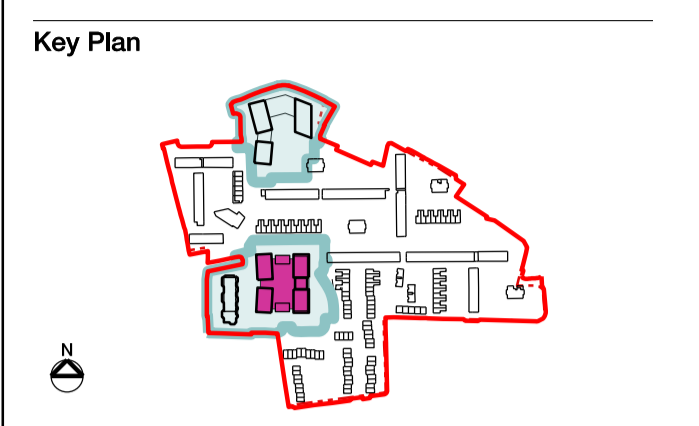
03 Elevation C-C (south)
Scale 1:250



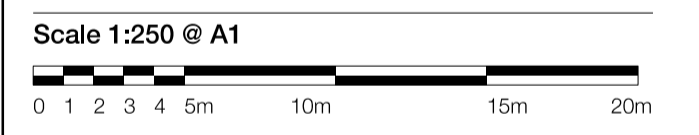
04 Elevation D-D (west)
Scale 1:250

Drawing Notes
Rainwater drainage
 Building roofs and residential balconies will be positively drained with external rainwater downpipes discreetly located where possible in semi-enclosed or fully enclosed balcony enclosures.
 Drainage details will be developed in the next stage of design and submitted for approval by discharge of Condition

General Notes
 DO NOT SCALE. All dimensions must be checked on site, errors are to be reported.
 All illustrated material is subject to copyright. Unless otherwise agreed in writing, all rights to use this document are subject to payment of all Architect's charges. This document may only be used for the express purpose and project for which it has been created and delivered, as notified in writing by the Architect. This document may not be otherwise used or copied. Any unauthorised use of this document is at the user's sole risk and without limiting the Architect's rights the user releases and indemnifies the Architect from and against all loss so arising.
 Contractors must ensure that cross referenced drawings and specifications noted on these drawings are checked on a regular basis to ensure that the latest revisions are used.



- Material key (Building E)**
- A. White brick
 - B1. Buff brick type 1
 - B2. Buff brick type 2
 - B3. Buff brick type 3
 - B4. Buff brick type 4
 - C. Dark brick
 - D1. Red brick type 1
 - D2. Red brick type 2
 - D3. Red brick type 3
 - D4. Red brick type 4
 - D5. Red brick type 5
1. Stretcher bond brickwork
 2. Soldier course brickwork
 3. Stack bond brickwork
 4. Bonded soldier course brickwork
 5. Recessed brickwork
 6. Rusticated brickwork
 7. Striped hand brickwork
 8. Masonry string course
 9. Entrance canopy and surround
 10. Rainscreen cladding
 11. Perforated metal canopy system
 12. Metal surround to double height entrances
 13. Metal-faced outward opening window
 14. Integrated ventilation panels with metal perforated screen
 15. White masonry sill
 16. Coloured masonry sill
 17. Metal flashing
 18. Metal perforated screen door
 19. Metal-faced external door system
 20. External door to ground floor homes
 21. Metal pocket balustrade
 22. Brick topped with metal balustrade
 23. Perforated metal balustrade
 24. 1500mm high balcony balustrade (wind mitigation)
 25. Metal, dark bronze-coloured fascia and soffit
 26. Metal, mid bronze-coloured fascia and soffit
 27. Metal, light bronze-coloured fascia and soffit
 28. Rendered soffit to match brickwork colour
 29. Masonry coping
 30. Rainscreen cladding parapet
 31. Masonry parapet capping
 32. Brick parapet
 33. Metal parapet
 34. Metal parapet
 35. Metal parapet
 36. Metal parapet
 37. Metal entrance gates



Issue Record

By	Chk	Date
PL3	For Planning Approval	NE RM 01.04.2021
PL2	For Information	NE RM 30.03.2021
PL1	For Planning Approval	CW NE 13.11.2020

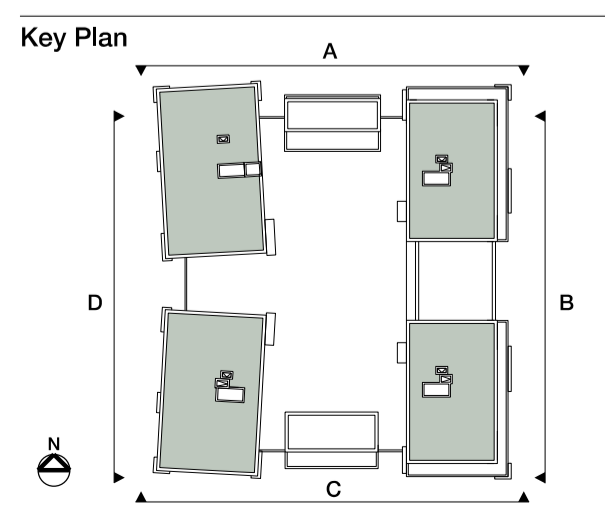
Title
 Building E
 Elevations A-A, B-B, C-C, D-D

Project
 Cambridge Road

Scale
 1:250 @ A1 1:500 @ A3

Status
 For Planning Approval

Drawing Number **Revision**
 503-PTA-EZ-ZZ-DR-A-1920 PL3



Patel Taylor
 48 Rawstorne Street
 London EC1V 7ND
 T +44 (0)20 7278 2323
 www.patel-taylor.co.uk

Patel Taylor